

# Louisiana Believes

---

District Planning Call

February 25, 2015

# Agenda

- I. **Academic Support**
  - a. **Assessment: District Support & Teacher Support**
  - b. Curriculum: District Support & Teacher Support
  - c. Accountability: District Support
- II. Early Childhood
- III. Student Opportunities
- IV. Talent
- V. Data Privacy
- VI. Next Steps

# Assessment Monthly Checklist

To assist district and school leaders with preparations for upcoming state assessments, particularly PARCC, the Department created an [Assessment Readiness Checklist](#).

Available in the assessment library, the Month-to-Month Checklist:

- Outlines all monthly action steps to prepare to administer PARCC, as well as other statewide assessments
- Links all supporting resources for each step
- Recommends resources to share with principals and teachers

## January 2015

Activity	Standard Assessments			Alternate Assessments			ACT Series		Other		
	LEAP/iLEAP Science and Social Studies	PARCC ELA and Math	EOC	ELDA	LAA 1	LAA 2	EXPLORE PLAN	ACT WorkKeys	DIBELS	NAEP	AP CLEP
<b>Assessment Content</b>											
Use <a href="#">assessment guides</a> to ensure every teacher understands content and structure of the assessments (alternate assessment guides available <a href="#">here</a> )	•	•	•	•	•	•					
Share PARCC <a href="#">practice tests</a> and support materials		•									

# March Accessibility and Accommodations

- ✓ Mar 18: Deadline to finalize IEP, IAP, and LEP forms for LEAP and iLEAP science and social studies
- ✓ Mar 26: Deadline to finalize IEP, IAP, and LEP forms for EOC
- ✓ Continue to evaluate effectiveness of accessibility and accommodations and revise IEP, IAP, LEP, and PNP documents as needed to meet student needs

# March Communication

- ✓ Mar 3: Monthly assessment and accountability call for district test coordinators and accountability contacts
- ✓ Ensure teachers, principals, and district leaders participate in [PARCC Office Hours](#) each Thursday at 11 and 4

# March Assessment Administration

- ✓ Jan 26-Mar 6: NAEP testing window for applicable schools
- ✓ Feb 2-Mar 13: LAA 1 and ELDA testing window
- ✓ Mar 9-Mar 13: EXPLORE and PLAN testing window
- ✓ Mar 10: Deadline to order additional materials for PARCC Performance Based Assessment (PBA) including Spanish math forms
- ✓ Mar 16-20: PARCC PBA math and ELA administration
- ✓ Mar 17: Initial ACT test date (window for accommodated assessment is Mar 17-31)
- ✓ Mar 17-19: Window for ordering makeup materials for ACT and WorkKeys
- ✓ Mar 18: Initial WorkKeys (PBT) test date (window for accommodated assessment is Mar 18-Apr 1)
- ✓ Create school-level training schedule for test coordinators and administrators to prepare for May EOC testing window
- ✓ Review EOC technology requirements to ensure readiness for May testing window

# Preparing for PARCC

Districts and schools across the state are preparing for PARCC in strategic ways.

## **Central Community Schools**

Central Middle School is preparing students and staff members for PARCC testing by simulating school-wide PARCC practice test sessions. During this session, students report to their official testing site and complete sections of the PARCC practice test that are later used for diagnostic reviews and intervention planning by educators.

To support these types of efforts, the LDOE created practice test guidance documents that can be found [here](#).

## **Allen Parish**

Teachers in Allen Parish personally took PARCC practice test units so that they could better understand the experiences that students will have during spring testing. These exercises allowed teachers to explore the format of the test in an authentic way, and realize that they share a responsibility to prepare students for academic success.

The PARCC practice test can be found [here](#).

# Preparation for PARCC PBA

The PARCC PBA begins March 16<sup>th</sup>. Multiple avenues exist to receive information and/or solve issues related to testing:

- ***Support Hotline for District Staff.*** Use this hotline for issues requiring immediate attention.  
*Hotline availability:*  
March 2 – May 22  
844-268-7320  
Hours of Support: 6:30 AM – 4:30 PM
- ***Assessment Inbox.*** Email questions and concerns at [assessment@la.gov](mailto:assessment@la.gov).

**Twice-weekly office hours support educators' planning questions.**

- ***Weekly PARCC Office Hours.*** Dedicated time to answer educator questions related to the PARCC assessments every Thursday at 11:00 a.m. and 4:00 p.m. Join the PARCC Office Hours [here](#)

**Next Step: Ensure district and school personnel are aware of and are using these communication methods.**



# Participation in State Assessments

Each year there is a small number of students who do not test for various reasons.

Many districts and schools have found one-on-one conversations between principals and parents as most effective in alleviating any concerns regarding participation.

As discussed at the February Superintendent Advisory Council meeting, the Department and BESE are committed to a thorough review of participation data post-assessment.

If districts have questions, please contact [assessment@la.gov](mailto:assessment@la.gov).

**Next step: Ensure principals are supported to talk with concerned parents.**

# Assessment Calendar

The 2015-16 Louisiana Assessment Calendar is now available [here](#) in the Assessment Library.

The calendar includes assessments for small populations, grades 3 through 8, and high school.

Please email [assessment@la.gov](mailto:assessment@la.gov) with any questions.

# Agenda

- I. **Academic Support**
  - a. Assessment: District Support & Teacher Support
  - b. Curriculum: District Support & Teacher Support**
  - c. Accountability: District Support
- II. Early Childhood
- III. Student Opportunities
- IV. Talent
- V. Data Privacy
- VI. Next Steps

# District Collaboration Meetings

In January, the Department hosted virtual collaboration meetings for district supervisors. At this week's in-person meetings, districts will discuss the structure, quality, and uses of various assessments. They will use this information to create a 2015-2016 assessment plan that ensures districts and schools are collecting the most useful data about student performance as efficiently as possible.

Meeting Schedule		Focus
<b>February 23-26</b>	In-Person	Share assessment system structures and evaluate the content of assessments
<b>March 25-31</b>	Virtual	Understand how best to use the results from assessments to integrate SLT and observation an feedback support for teachers
<b>April 20-23</b>	In-Person	Develop teacher support plans for curricula and assessments

**Next step: Ensure your staff is able to attend these meetings and shares the content to develop next steps for curricula and assessments in 2015-2016.**

# District Collaboration Meetings – CANCELED MEETINGS

Due to weather the Department canceled three of the supervisor meetings.

- **Cohort 1 in Crowley** (Monday, February 23): Meeting will continue as scheduled. Sign-in begins at 8 am.
- **Cohort 2 in Alexandria** (Monday, February 23): This meeting is canceled. We are working to reschedule this meeting the week of March 2. We will be in touch once dates and locations are finalized.
- **Cohort 3 in Bossier** (Tuesday, February 24): This meeting is canceled. We are working to reschedule this meeting the week of March 2. We will be in touch once dates and locations are finalized.
- **Cohort 4 in Rayville** (Tuesday, February 24): This meeting is canceled. We are working to reschedule this meeting the week of March 2. We will be in touch once dates and locations are finalized.
- **Cohort 5 in Baton Rouge** (Thursday, February 26): Meeting will continue as scheduled. Sign-in begins at 8:30 am.
- **Cohort 6 in Baton Rouge** (Thursday, February 26): Meeting will continue as scheduled. Sign-in begins at 1 pm.

Districts can join the meetings in Baton Rouge or a rescheduled meeting in early March.

# 15-16 Teacher Leader Training

Professional Development Opportunity	When	Where	Registration Opens
<b>Teacher Leader Summit</b>	June 4-5, 2015	New Orleans	<ul style="list-style-type: none"> <li>District cohort size: early March</li> <li>Registration: Late March 2015</li> </ul>
<b>Teacher Leader Summer Institutes</b>	July 2015	Various locations around the state	<ul style="list-style-type: none"> <li>Mid May 2015</li> </ul>
<b>Teacher Leader Collaboration Events</b>	September 2015 November 2015 January 2016	Various locations around the state	<ul style="list-style-type: none"> <li>August 2015</li> </ul>
<b>District Professional Development Options</b>	District determined	Various locations around the state	<ul style="list-style-type: none"> <li>District determined</li> </ul>

**A detailed calendar will be released this Friday, February 27.**

**Next step: Work with your staff to identify your professional development needs and planning out your professional development calendar for 15-16. The Department will also support this work through the district supervisor collaboration meetings.**

# 2015 Teacher Leader Summit

Event	Audience	When	Where	Focus
<b>2015 Superintendent Collaboration</b>	Superintendents and district planning teams	June 3: 12-5 June 4: 9:30-4:30	Morial Convention Center, New Orleans	The Superintendent Collaboration is designed to help districts create strong plans to support teachers and students heading into the 15-16 school year. Participants will attend sessions and have the opportunity to collaborate on topics such as recruiting talent, and supporting instruction and teacher improvement.
<b>2015 Teacher Leader Summit</b>	Teacher Leaders, school leadership, district leadership	June 4: 9:30-4:30 June 5: 8:00-1:00	Morial Convention Center, New Orleans	The Summit will bring together more than 5,000 educators and content experts from across the state to share their knowledge, learn new skills, and prepare for the upcoming 2015-16 school year. Sessions, led by content experts, will cover a variety of topics such as setting goals, planning for and delivering high-quality instruction, assessing, and reflecting on results to foster student and teacher improvement.

# 2015 Teacher Leader Summit

## Summit next steps:

1. Encourage your Teacher Leaders, principals, and district personnel to apply to design and present sessions at the Summit. [Applications](#) due March 18.
2. Look for an announcement in the March 10 district newsletter with additional information about:
  - The number of Teacher Leaders that each district can register for the Summit
  - How and when to register
  - Which hotels in New Orleans are offering state rates
  - Sessions that will be offered at the Summit

If you have any questions regarding the Summit, please email [LouisianaTeacherLeaders@la.gov](mailto:LouisianaTeacherLeaders@la.gov)



# Curricular Resources

The Department's is committed to helping districts identify and access high quality instructional materials. As part of this goal, over 400 publishing companies were invited to participate in the 2014-2015 ELA and Math informal instructional materials review process. Districts also encouraged vendors to submit.

- **Current reviews**: Over 50 publishers submitted materials by the February 1, 2015 deadline. Approximately [400 titles are now in various stages](#) of the review process. Publishers with materials that rank Tier 1 are offered a state contractual agreement.
- **What's New?** To further support districts, the Department will offer contract agreements for instructional materials ranked as either [Tier 1 or Tier 2](#). This list currently includes: Amplify, Core Knowledge, Eureka, Houghton Mifflin Harcourt, Pearson, Scholastic, Springboard ELA, and The Math Learning Center.

**Next step: Bookmark the [Annotated Review](#) page to view new and ongoing postings.**  
**Reminder: [Public comment](#) is welcomed!**

# Compass 2014-2015: End of Year Processes

The Department has released the [Compass 2014-2015: Guide to End-of-Year Processes](#). The purpose of this document is to highlight necessary actions and technical guidance to ensure final evaluations for school personnel are completed by July 31, 2015. **Please see the table below for specific actions for each user type.**

DEADLINE	ACTIONS by USER TYPE		
	District CVR Data Managers & Compass Contacts	Evaluators (principal evaluator, principal)	Employees (teacher, counselor, librarian)
<b>April 19</b>	<b>View Only Period:</b> CVR Roster Verification	<b>View Only Period:</b> CVR Roster Verification	<b>View Only Period:</b> CVR Roster Verification
<b>May 15</b>	<b>Open Correction Period:</b> CVR Roster Verification	<b>Open Correction Period:</b> CVR Roster Verification	<b>Open Correction Period:</b> CVR Roster Verification
<b>July 31</b>	<b>Final Evaluations:</b> Monitor Completion	<b>Final Evaluations:</b> <ul style="list-style-type: none"> <li>- Complete Observations</li> <li>- Assess Student Outcomes Ratings</li> <li>- Determine Final Ratings</li> </ul>	<b>Final Evaluations:</b> <ul style="list-style-type: none"> <li>- Review observation data &amp; feedback</li> <li>- Report progress on student outcomes</li> </ul>

For questions related to this process or the supporting guide, please contact your Network Data Specialist or email [compass@la.gov](mailto:compass@la.gov).

# Agenda

## I. **Academic Support**

- a. Assessment: District Support & Teacher Support
- b. Curriculum: District Support & Teacher Support
- c. **Accountability: District Support**

## II. Early Childhood

## III. Student Opportunities

## IV. Talent

## V. Data Privacy

## VI. Next Steps

# Accountability Resources

## Calculator Overview

The school performance score calculators are designed for educators to input school-level data in order to estimate school performance scores, for the purposes of planning.

The 2014-2015 school performance score calculators can be found on the [School Results and Resources](#) webpage on Louisiana Believes.

## Key Updates

The 2014-2015 calculators include the following:

- Updates to the Strength of Diploma/Graduation Index, based on Jump Start
- Assessment Index calculations by grade, in addition to overall, for K-8
- *Note: The K-12 calculator reflects that the High School Progress Points Policy is under review*

## Accountability Resources

For additional planning and support, the following accountability resources are available:

- [2014-2015 Accountability Webinar Overview](#)
- [K-8 Progress Point Fact Sheet](#)
- [Jump Start Fact Sheet](#)

# Compass Improvements: Background

## Background

Act 240 of the 2014 Legislative session established a subcommittee, comprised of accountability commission members, educators, and legislators, to “report on and make recommendations regarding the overall effectiveness of the evaluation program, including but not limited to any recommendations for changes to board policy or state law with respect to”:

- (a) “value-added assessment model,”
- (b) “measures of student growth for grades and subjects for which value-added data are not available and for personnel for whom value-added data are not available,” and
- (c) “elements of evaluation and standards for effectiveness as defined by the board.”

The Department has added a set of recommendations to the subcommittee recommendations to guarantee principals maintain high expectations and a commitment to accountability in using the Compass instrument.

# Improving Compass: The Role of the School Leader

To create the authentic process we seek, all teachers deserve schools where:

1. The school leader sets goals and direction for the school with a focus on academic improvement.
2. The school leader implements structures and processes for the team (teachers, supervisor, school leaders) designed to improve instruction through skill development and a focus on constant improvement.
3. In evaluating and providing feedback to all teachers, school leaders rely on multiple measures, as part of these structures and processes.

In schools where teachers receive these supports and direction, the Compass tool is used as part of daily routines and practices to improve educators' skills and student achievement.

In schools where these supports and sense of direction are lacking, we see the concerns noted on the previous slide.

# Compass Framework

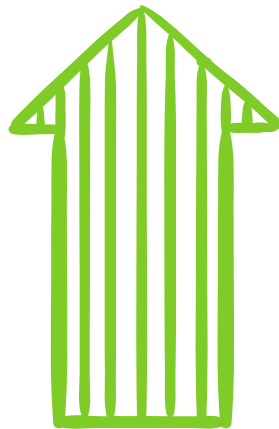
## The Role of the School Leader

- **Support:** The school leader leads teachers through daily practices and supports focused on educator skill development and student achievement. Like teachers, the school leader receives direct support.
- **Goal Setting:** The school leader sets goals for the school, including the success of the educators and the students within the school.
- **Empowerment:** The school leader is empowered to make decisions about how best to support and lead educators.

---

AN AUTHENTIC COMPASS PROCESS FOR IMPROVEMENT

---



SUPPORT



GOAL SETTING



EMPOWERMENT

# Recommendation: Transition

During the transition to new standards and assessments, to ensure an accurate measurement of student achievement, Louisiana will establish a two-year “baseline” period (2015 and 2016). During this baseline period:

- School and District Accountability: Distribution of schools cannot drop below the 2012-2013 distribution.
- Compass: Value-added data will not be required for use.
- Student promotion: Local flexibility to make 4<sup>th</sup> grade promotion decisions.

For more information on the transition policies, please click [here](#).



# Recommendation: Compass & Support for Leaders

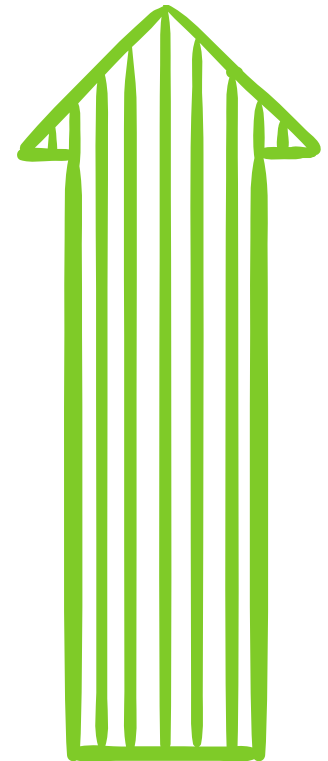
**Support for School Leaders:** Train school leaders on how to create and manage schools where teachers collaborate to ensure student growth and build professional skills.

## **Expand the use of TAP:**

- The TAP initiative, which establishes collaboration and feedback routines that support educator reflection and improvement, is expanded to support school leaders.
- The Department and TAP leadership districts support interested districts as they incorporate TAP Best Practices (in part or whole) throughout their district or in targeted schools.

## **Develop a Statewide Principal Fellowship Program:**

- The Department will initiate a fellowship for school leaders.
- The fellowship will help school leaders use the Compass tool to improve instruction by supporting teacher improvement through collaboration, observation, and feedback.



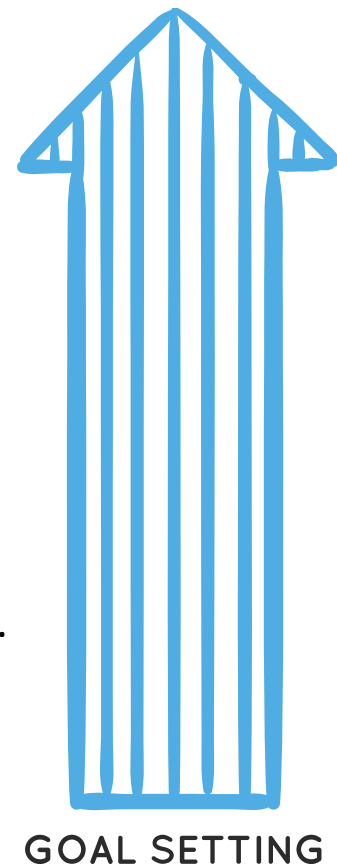
SUPPORT

# Recommendation: Compass & Leader Goal Setting

**Goal Setting for School Leaders:** School leaders set ambitious goals, grounded in school performance (student performance), to guide the school team.

**School Leader Goals Overview:** Student learning targets based on the performance of students at the school.

- One learning target based on overall school performance improvement in the current school year, as measured by SPS.
- One learning target based on a component of school performance improvement (e.g., ACT improvement for a high school, math achievement for an elementary school).
- To support and guide school leaders, recommended targets based on historical performance of similar schools will be provided by the Department.
- School leaders at alternative, juvenile, K-2, and special schools will have alternate frameworks and recommended goals, with Department-provided supports. The Department, in the spring and summer of 2015, will work with school leaders from these schools to develop alternate frameworks for goal setting.

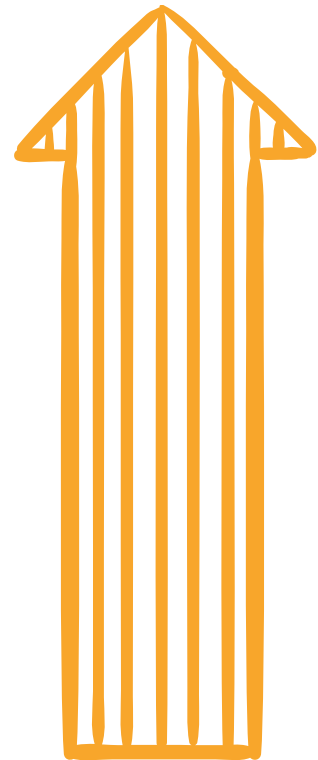


# Recommendation: Compass & Empowerment

**Empowerment of School Leaders:** School leaders provide feedback for improvement and final ratings based on multiple measures of educator and student success.

## Final Evaluation Overview:

- For all teachers, leaders consider multiple measures to determine teachers' ratings, including value-added (where available) and student learning targets (goals) for the student growth score.
- For all teachers, an "ineffective" score on either half of the evaluation will no longer override other measures or the principal's judgment.
  - Value-added data continues to provide important information to school leaders and educators, but does not override school leaders' decision-making.
- For teachers with value-added data, leaders may adjust the student outcomes score by +/- 1 level from the VAM score received, based on the learning targets.



EMPOWERMENT

# Recommendation: Observation and Rubric Support

The Department, in partnership with the Louisiana Association of Principals (LAP), will convene a working group of principals and teachers to consider best practices for making the observation process as efficient and effective as possible. The Department and LAP will release guidance and information on:

- The alternate rubric process and rubric tools, in consultation with principals and educators.
- Best practices and strategies for efficient, effective observations, as well as for setting SLTs.

## **Additional Department of Education Recommendation**

- Revise policy language regarding observations to clarify that principals and administrators should conduct as many observations of teacher and administrator practice as is sufficient to gain a complete and accurate picture of performance, including strengths and weaknesses, and to impart individualized feedback throughout the year.

# Recommendations: Guaranteeing Accountability

In addition to the subcommittee recommendations, the Department is also recommending:

## **Additional principal goal setting parameters** including:

- If the school performance score (SPS) declines for two consecutive years for any principal, the local superintendent shall provide justification, in writing, to the Department in order for the principal to set learning targets lower than the LDE recommended targets beginning in the third year; and
- If the SPS declines for three or more consecutive years for any principal, the principal's learning targets shall be set at or above the LDE recommended targets beginning in the fourth year.

## **Annual reporting** on:

- Overall effectiveness ratings, as in prior years;
- Rating for teachers with value-added data including the frequency with which value-added ratings are adjusted based on student learning targets; and
- Principal goal setting (e.g., percentage and number of principal learning targets that are above, at, or below the LDE recommended targets, percentage and number of principals required to set recommended targets based on decline).

# Resources and Next Steps

Resource	Timeline
<b>Overview of Compass Proposals for Teachers and Principals</b>  <b>Conference Call Information</b> ( <i>*No pre-registration required</i> )  Dial into the Phone Bridge: (866) 206-6154 When prompted, please give the meeting ID #: 1653001	Tomorrow (2/26) at 3:30 pm
<b>Principal Guidebook</b> , including best practices, resources, etc.	March 2014
<b>TAP expansion support</b>	April 2014
<b>Principal fellowship information</b>	April 2014

Please contact [Compass@la.gov](mailto:Compass@la.gov) with any questions.

# Agenda

- I. Academic Support
  - a. Assessment: District Support & Teacher Support
  - b. Curriculum: District Support & Teacher Support
  - c. Accountability: District Support
- II. **Early Childhood**
- III. Student Opportunities
- IV. Talent
- V. Data Privacy
- VI. Next Steps

# Early Childhood

## Unifying The System

*The Department continues to integrate child care functions within the Early Childhood Office*

- **CCAP Provider Certification** moved to LDE from the Department of Children and Family Services
  - Staff register child care centers that want to serve children with public funding (CCAP)
- All remaining child care functions will move to the Department on July 1

## Supporting the Field

*33 Cohort 3 Pilots representing 36 school districts were approved for pilot and technology grants*

- Orientation sessions will run through March and local leaders will establish leadership structures, plan for training teachers, and develop a CLASS observation schedule for 2015-16

## Curricular Reviews for Early Childhood

*LDE has launched a process to review early childhood curriculum for children from birth through PreK*

- Process will be similar to that for K-12 and results will be published later this spring

## LA 4 and NSECD Allocations for 2015-16 will be announced at March BESE

*Coordinated enrollment is underway and communities have applied for PreK slots*

- Pilots are developing their coordinated enrollment [systems](#)
- More districts and child care centers expressed interest in expanding slots for at-risk 4 year olds

Department has launched a biweekly early childhood-specific email newsletter

To subscribe, go to <http://www.louisianabelieves.com/resources/subscribe>



# Agenda

- I. Academic Support
  - a. Assessment: District Support & Teacher Support
  - b. Curriculum: District Support & Teacher Support
  - c. Accountability: District Support
- II. Early Childhood
- III. Student Opportunities**
- IV. Talent
- V. Data Privacy
- VI. Next Steps

# Course Choice 2015-16

**Course Choice offers students opportunities to pursue college coursework, AP courses, and career training that prepare them for opportunities after high school by enabling schools to select from hundreds of online and face-to-face courses not traditionally offered by high schools and middle schools.**

Course Choice supports both the **TOPS University** and **Jump Start TOPS Tech** diploma pathways and is funded through the [Supplemental Course Allocation](#) in the MFP.

Courses are offered by BESE-approved course providers that include colleges, universities and business and industry. Courses may be online, f2f, or a combination of both.

Types of courses:

- Advanced Placement/ Dual Enrollment
- Career and Technical Education (CTE)
- TOPS Eligible
- Test Preparation
- Intensive Remediation

For more information go to: [www.lacourses.net](http://www.lacourses.net)

# Course Choice 2015-16: Registration Webinar

Registration for the 2015-16 academic year will open in early April. The Department will host three webinars for principals, curriculum supervisors, and school counselors on accessing the Course Choice Registration System including locating courses, registering students, approving/rejecting enrollment requests, and withdrawing enrollment requests.

Webinar Date(s) and Time(s):

- March 17, 2015 @ 3:00 pm  
<https://louisianaschools.adobeconnect.com/ccregoverview/>
- March 24, 2015 @ 3:00 pm  
<https://louisianaschools.adobeconnect.com/ccregoverview/>
- March 26, 2015 @ 3:00 pm  
<https://louisianaschools.adobeconnect.com/ccregoverview/>

*Note: Each of the three webinars will cover the same topic so you only need to participate in one of the three presentations.*

**Next step: attend a Course Choice registration webinar.**

# Advanced Placement Test Fee and Summer Professional Development Opportunities

To encourage and enrich growth of the AP<sup>®</sup> and IB<sup>®</sup> Programs, the Louisiana Department of Education is now accepting applications for AP<sup>®</sup>/IB<sup>®</sup> exam fee reimbursement, IB<sup>®</sup> diploma program registration fee reimbursement, and AP<sup>®</sup> summer institute fee reimbursement. Funds are limited and will be available until they are completely allocated for the following:

1. 2015 AP<sup>®</sup> Exam Fee Reimbursement
2. 2015 AP<sup>®</sup> Summer Institute Fee Reimbursement
3. 2015 IB<sup>®</sup> Exam and Registration Fee Reimbursement

Applications will be accepted through Friday, March 6, 2015.

For more information go to: <http://www.louisianabelieves.com/courses/advanced-placement>

Participants are encouraged to participate in the next webinar providing information on the 2015 AP<sup>®</sup>/IB<sup>®</sup> fee reimbursement program on **February 26 from 2:00 p.m. - 3:00 p.m.**

# Jump Start

Timeframe	Key Activity
March	<ul style="list-style-type: none"><li>• 11 new graduation pathways submitted for BESE approval, including: a) four “Helper” pathways; b) Workplace Safety; and c) four different pathways specialized for Act 833-qualifying students.</li><li>• If BESE approves, this brings to 45 the number of approved graduation pathways, closer to our goal of “a pathway for every student</li><li>• The Jump Start Graduation Pathway Review Panel will meet again in mid-March to consider a series of new pathways, including Maritime, Micro-Enterprise and (possibly) Early Childhood Care</li></ul>
April	<ul style="list-style-type: none"><li>• Graduation pathway “harmonization” (typo corrections, common formatting, consistent course listings, etc.)</li><li>• Next round of pathway submissions for BESE approval</li><li>• Regions can continue to submit their pathway adapt / adopt spreadsheets, indicating the graduation pathways they want to use with their students</li><li>• Course Choice registration for courses that help students complete their Jump Start credentials, and which qualify for the CDF adder (~\$240/course)</li></ul>

# 2015 Jump Start Super Summer Institute

LDOE, in partnership with SLCC and LCTCS, will provide teacher certification training for Jump Start Industry Based certifications/pathways at the 2015 Jump Start Super Summer Institute (SSI).

## **Tentative “Save the Date”**

**Date:** July 20 – 24 from 8:00am – 5:00pm

**Location:** South Louisiana Community College in Lafayette, La

Trainings offered during SSI will be determined based upon LEAs specifying, via an online survey in the LDE newsletter, the certifications needed for 2015-2016 Jump Start implementation

Please direct all questions about the Super Summer Institute to [JumpStart@la.gov](mailto:JumpStart@la.gov).

# Agenda

- I. Academic Support
  - a. Assessment: District Support & Teacher Support
  - b. Curriculum: District Support & Teacher Support
  - c. Accountability: District Support
- II. Early Childhood
- III. Student Opportunities
- IV. Talent**
- V. Data Privacy
- VI. Next Steps

# Educator Preparation Spring Forum

The Department will hold its **second educator preparation policy forum on Friday, March 6<sup>th</sup> from 9am-11am at the Claiborne Building in Baton Rouge.**

- At this forum, the Department will discuss proposed changes to:
  - The criteria and process used to approve educator preparation programs
  - Requirements for teacher certification, including student teaching experiences and coursework
- District leaders interested in participating in Believe and Prepare or sharing feedback on proposed educator preparation policy changes are encouraged to attend. **Click [HERE](#) to RSVP.**
- Please send questions to [believeandprepare@la.gov](mailto:believeandprepare@la.gov) or visit our [website](#) for more information.



# Congratulations to our Teacher and Principal of the Year Semi-Finalists

## 2016 Teacher of the Year Semi-Finalists

Ascension Parish	Danielle Delaune
Caddo Parish	Nicole Vasquez
Calcasieu Parish	Phyllis Aswell
Collegiate Academies	Evan Stoudt
Concordia Parish	Jennifer Jeffers
East Baton Rouge Parish	Michelle Perk
Evangeline Parish	Brandi Marcantel
Jefferson Parish	Pablo Pato
Lincoln Parish	April Winstead
Natchitoches Parish	Charlotte Turner
Plaquemines Parish	Sammie Lynn Drury
Sabine Parish	Donna Manuel
St. Bernard Parish	Michelle Abadie
St. James Parish	Rebecca Keller
St. John the Baptist Parish	Natalie Klibert
St. Tammany Parish	Kelly Stomps
Tangipahoa Parish	Averil Turner
Terrebonne Parish	Summer Skarke

## 2016 Principal of the Year Semi-Finalists

Acadia Parish	Irma Trosclair
Algiers Charter School Association	Rene Lewis-Carter
Ascension Parish	Jaimee Williams
Bienville Parish	Daryl Savage
Bossier Parish	Lisle Meador
Calcasieu Parish	Joseph David
Catahoula Parish	Kassandra Floyd
City of Baker Schools	Tammy Golden
Evangeline Parish	Cheri Fontenot
Jefferson Parish	Suzanne Bordlee
Rapides Parish	Duane Urbina
ReNew Charter Schools	Timothy Hearin
St. Mary Parish	Rachael Credeur
St. Tammany	Diane Combs
Terrebonne Parish	Matthew Hodson
Vermilion Parish	Patricia Gaspard
Vernon Parish	Carolyn Bosley
West Feliciana Parish	Jim Carroll

# Agenda

- I. Academic Support
  - a. Assessment: District Support & Teacher Support
  - b. Curriculum: District Support & Teacher Support
  - c. Accountability: District Support
- II. Early Childhood
- III. Student Opportunities
- IV. Talent
- V. Data Privacy**
- VI. Next Steps

# Act 837: Privacy Guidebook

The Department will release a privacy guidebook that provides guidance on the following issues related to implementation of Act 837:

Guidance Topics	Dates
<ul style="list-style-type: none"><li>• Unique statewide student identifier system functionality</li><li>• Data systems and submissions</li></ul>	March 2015
<ul style="list-style-type: none"><li>• Assessment</li><li>• Accountability</li><li>• Finance</li><li>• Teacher supports</li><li>• Student opportunities</li></ul>	April 2015
<ul style="list-style-type: none"><li>• Early childhood</li><li>• Food and nutrition</li><li>• Medicaid</li><li>• Monitoring and compliance</li><li>• Scholarship and nonpublics</li><li>• Reporting</li></ul>	May 2015

# Act 837: Unique ID System

In the initial release of the privacy guidebook, the Department will provide resources and guidance to support LEAs in taking the following actions:

Action	Deadline	Resources
LDE releases technical documentation on unique identifier system	March 2015	<ul style="list-style-type: none"><li>• File format</li><li>• System specifications</li></ul>
LDE and LEAs modify data systems based on technical guidance	April 2015	<ul style="list-style-type: none"><li>• Data coordinators training on April 20</li></ul>
LDE launches unique identifier system and LEAs attend regional training sessions	May 2015	<ul style="list-style-type: none"><li>• Five regional, in-person training sessions</li></ul>
LEAs conduct initial ID assignment	June 2015	<ul style="list-style-type: none"><li>• Help desk</li><li>• Online training portal</li></ul>

**The Department will communicate information about this transition to data coordinators through the monthly webinars, newsletter, and the data coordinator training session on April 20.**

# Agenda

- I. Academic Support
  - a. Assessment: District Support & Teacher Support
  - b. Curriculum: District Support & Teacher Support
  - c. Accountability: District Support
- II. Early Childhood
- III. Student Opportunities
- IV. Talent
- V. Data Privacy
- VI. **Next Steps**

# Next Steps: Spring Support Releases

Month	Resources	Supports
March	<ul style="list-style-type: none"> <li>• <b>Guidebook Series:</b> District planning, Principal Instructional, Early Childhood, High School</li> <li>• Release <b>2015-16 Professional Development Package Options for districts</b></li> <li>• <b>15-16 Compass and Goal Setting Support Tools:</b> Additional Sample SLTs and Related Guidance</li> <li>• <b>Tier 2 ELA and Math Instructional Materials</b></li> </ul>	<ul style="list-style-type: none"> <li>• 3/25-3/31: <b>Virtual Supervisor Collaboration</b></li> <li>• <b>Hands-On Trainings for LEAP Web, LEAP Data, and EOC Administration (DTCs)</b> <ul style="list-style-type: none"> <li>• Thursday, March 26th: Baton Rouge area, location TBD</li> <li>• Friday, March 27th: New Orleans area, location TBD</li> <li>• Monday, March 30th: Alexandria, Aiken Professional Development Center</li> </ul> </li> <li>• 3/31: <b>Tier 2 IMR Contracts Negotiated:</b> Core Knowledge, Houghton Mifflin Harcourt, Pearson, Springboard, and Scholastic (effective July 1)</li> </ul>
April	<ul style="list-style-type: none"> <li>• <b>Course Choice</b> Registration System Opens for 15-16 Courses</li> </ul>	<ul style="list-style-type: none"> <li>• 4/20-4/23: <b>In Person Supervisor Collaboration</b></li> </ul>
May	<ul style="list-style-type: none"> <li>• <b>EOC and K-8 science and social studies results released</b></li> </ul>	<ul style="list-style-type: none"> <li>• Registration opens for <b>ELA and Math Summer Institutes</b></li> </ul>
June	<ul style="list-style-type: none"> <li>• <b>AP College Board Professional Development</b></li> </ul>	<ul style="list-style-type: none"> <li>• 6/3-6/4: <b>Superintendent's Collaboration</b></li> <li>• 6/4-6/5: <b>Teacher Leader Summit</b></li> <li>• 6/16-6/19; 6/22-6/25: <b>AP Summer Institute</b></li> <li>• 6/30 <b>Tier 1 and 2 Instructional Materials Contracts effective for SY2015-16.</b></li> </ul>