



LOUISIANA'S NEXT GENERATION EDUCATORS



Communicating to Ensure Candidate Success

February 29, 2016

Featured Pilots

East Baton Rouge and Louisiana State University

Lincoln Parish and Louisiana Tech University

**Morehouse and Richland Parish and
University of Louisiana at Monroe**



EBR
ONE TEAM, ONE MISSION

Working in Partnership With
Louisiana State University Holmes Early Childhood
Louisiana State University Geaux Teach English

Believing in Louisiana's Schools: Preparing Mentors and Teachers for the Future

Recruitment

- Initial contact through Survey Monkey
- Emails to principals
- Flyers
- Campus recruitment meeting
- Brochure



Believing in Louisiana's Schools: Preparing Mentors and Teachers for the Future

Participation

LSU's Continuing Ed Moodle Platform

- Email
- News Forums
- Discussion Boards
- Topic Boxes
- Websites
- Activities & Assignments

LSU CONTINUING EDUCATION

Believing in Louisiana's Schools: Preparing Mentors and Teachers for the Future

1 Believe & Prepare Grant Information - Toggle

Goals of the Partnership

Goal 1: Mentor Teacher Recruitment and Development - the grantee will have identified mentor teachers who are demonstrably prepared to work with growing numbers of teachers, and who have a defined role with respect to new teacher development.

- The creation of a defined role for the mentor teacher with respect to: new teacher instructional leadership
- Formalizing the role and status of the mentor teacher through school system recognition in partner institutions as adjunct or clinical faculty
- Recruitment of mentor teachers based on demonstrated impact on all six
- Implementation of a program of profession support and development for with proven experience in this area, such as but not limited to: Leading Teaching, or St. Cloud State University (co-teaching mode)
- Providing mentors with the opportunity to directly support teacher c
- Assessment of mentor teachers' success at year-end, including

Goal 2: Residency Design and Preparation - the grantee will identify residency for virtually all participants in a complete pathway have identified and developed a cadre of mentor teachers residents.

- Development of formalized partnerships with
- Development and pilot of system for principal knowledge and skill through performance
- Identified topics and curriculum for Teacher C
- Utilization of practicum and student teaching

2 Elementary Holmes Graduate Teacher Preparation Program - Toggle

3 PK-3 Teacher Preparation Program - Toggle

4 LSU Graduate School Information - Toggle

Thinking of pursuing a graduate degree? Already have a masters degree....is the Education Specialist Certificate or PhD the next step?

- LSU School of Education Graduate Programs
- LSU Graduate School
- Financial Aid Information
- Important Dates & Calendars
- GS-Summer-2016-Calendar

Add an activity or resource



Believing in Louisiana's Schools: LSU Geaux Teach Humanities

University-District-School Communication Strategies

- Challenge: Recruiting participant teachers through contact with principals has tended to yield few results
- Solution: We are working collaboratively with principals and district contacts to arrange meetings between university representative and ELA teachers.
- Communication Tools: Surveymonkey, Google docs, email, face-to-face

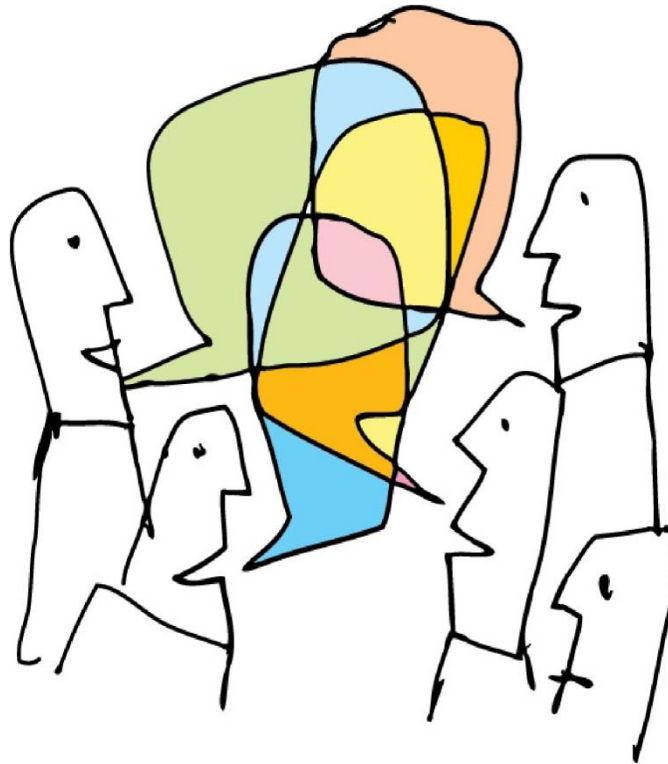


Believing in Louisiana's Schools

Ongoing Meaningful Communication Key to Sustaining a True Partnership

Every good
conversation
starts with
good listening.

©2009 Mike Aranz



Featured Pilots

East Baton Rouge and Louisiana State University

Lincoln Parish and Louisiana Tech University

**Morehouse and Richland Parish and
University of Louisiana at Monroe**

Lincoln Parish and Louisiana Tech University

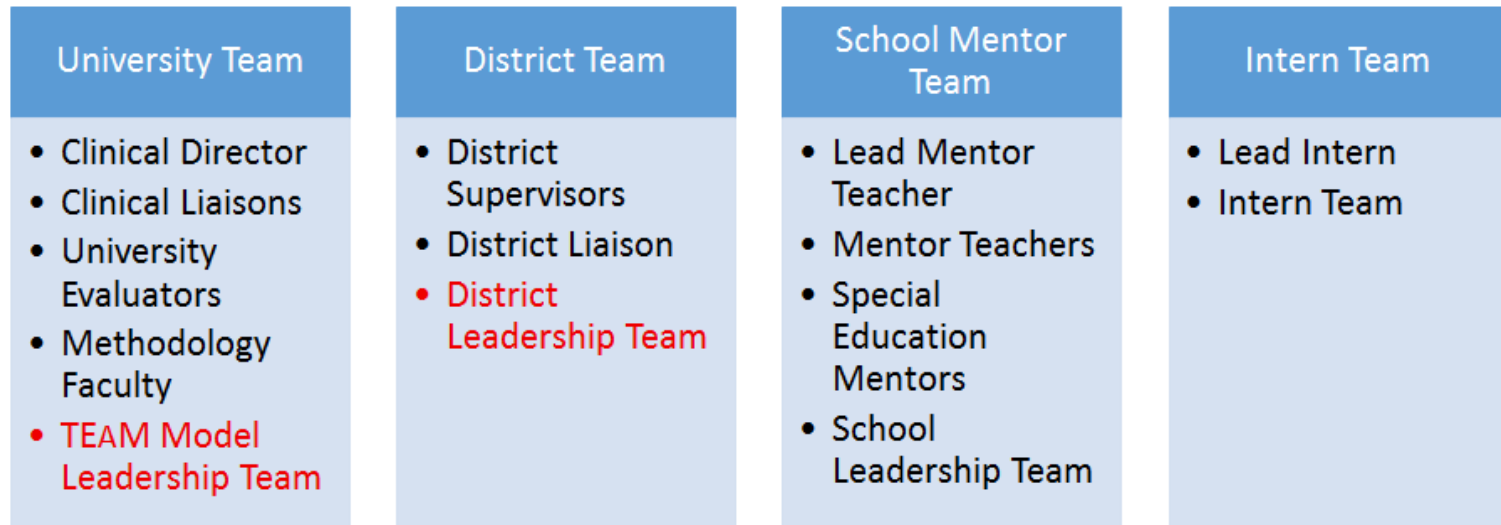


TEAM

TEACHER EDUCATORS AND MENTORS

The TEAM Model

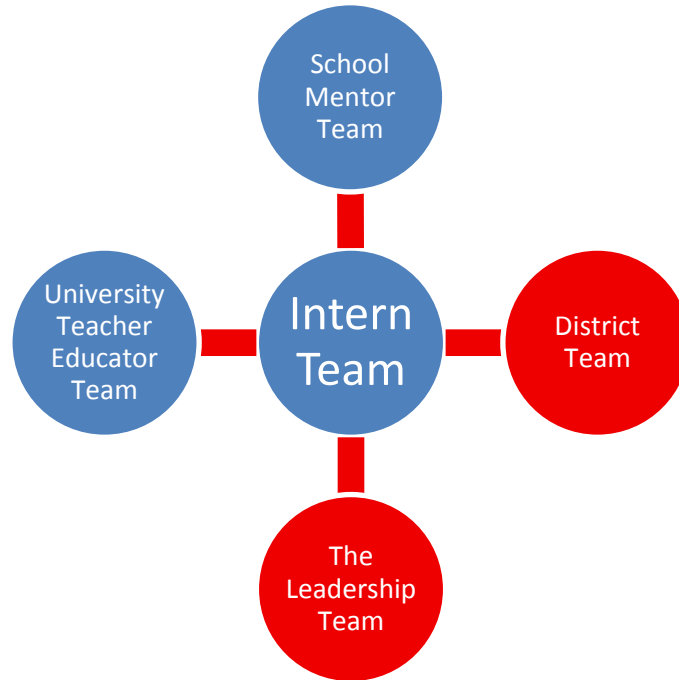
Teacher Educators & Mentors



Copyright 2016, The Clinical Residency Research Center, Dr. Amy Vessel & Dr. Dawn Basinger, Louisiana Tech University, College of Education

Lincoln Parish and Louisiana Tech University

The TEAM Model



*Copyright 2016, The Clinical Residency Research Center,
Dr. Amy Vessel & Dr. Dawn Basinger, Louisiana Tech University, College of Education*

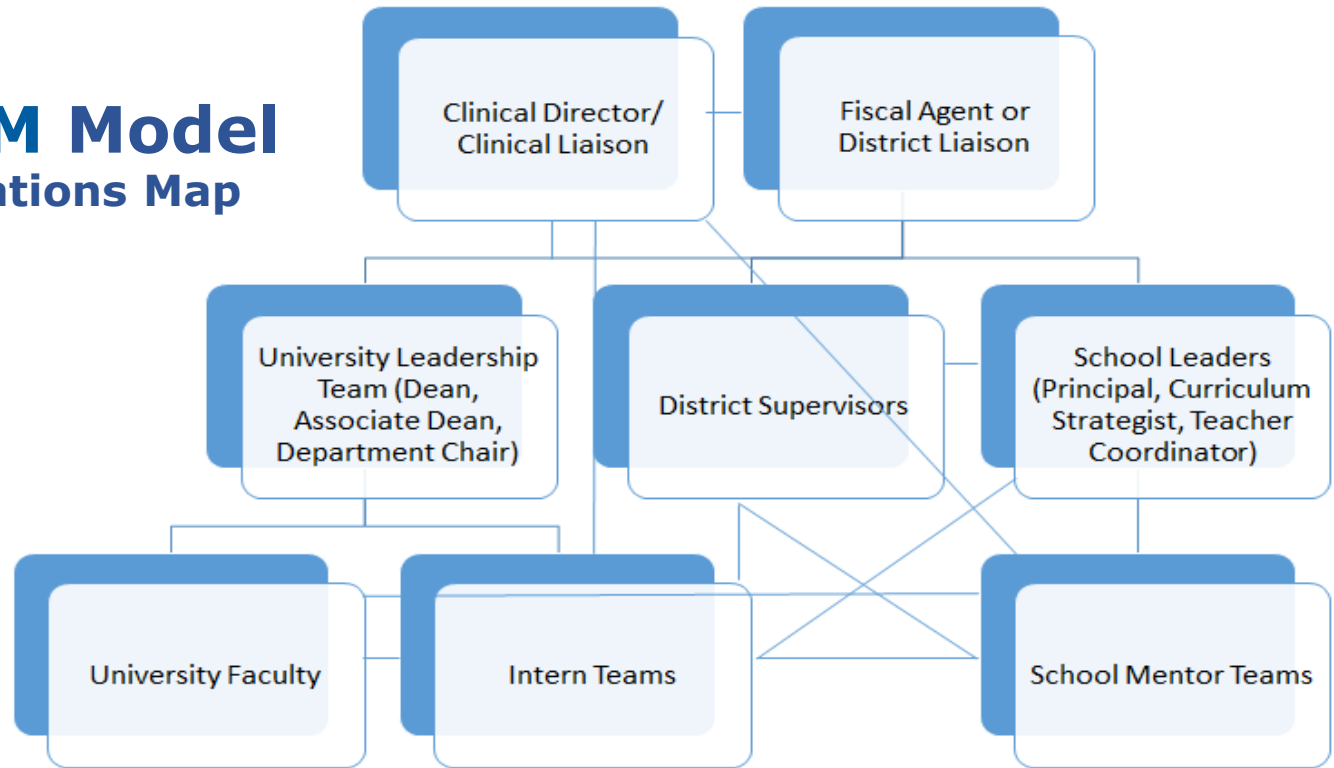
Lincoln Parish and Louisiana Tech University



Weekly Communication	Grant Updates	TEAM Model Updates
Bi-Weekly Communication	School Mentor TEAM Liaison Meetings	School Leader Updates
Monthly Communication	Intern Table Talks	Clinical & District Liaison Updates
Quarterly Communication	TEAM Evaluation Meetings	Mentor TEAM Co-Teaching Plan
Annual Communication	Mentor TEAM Planning Meeting	Entire TEAM Planning Meeting

Lincoln Parish and Louisiana Tech University

The TEAM Model Communications Map



*Copyright 2016, The Clinical Residency Research Center,
Dr. Amy Vessel, Louisiana Tech University, College of Education*

Lincoln Parish and Louisiana Tech University



Success of the Lincoln Parish & Louisiana Tech University Partnership

Collaboration...Compromise...Communication

*Copyright 2016, The Clinical Residency Research Center,
Dr. Amy Vessel & Dr. Dawn Basinger, Louisiana Tech University, College of Education*

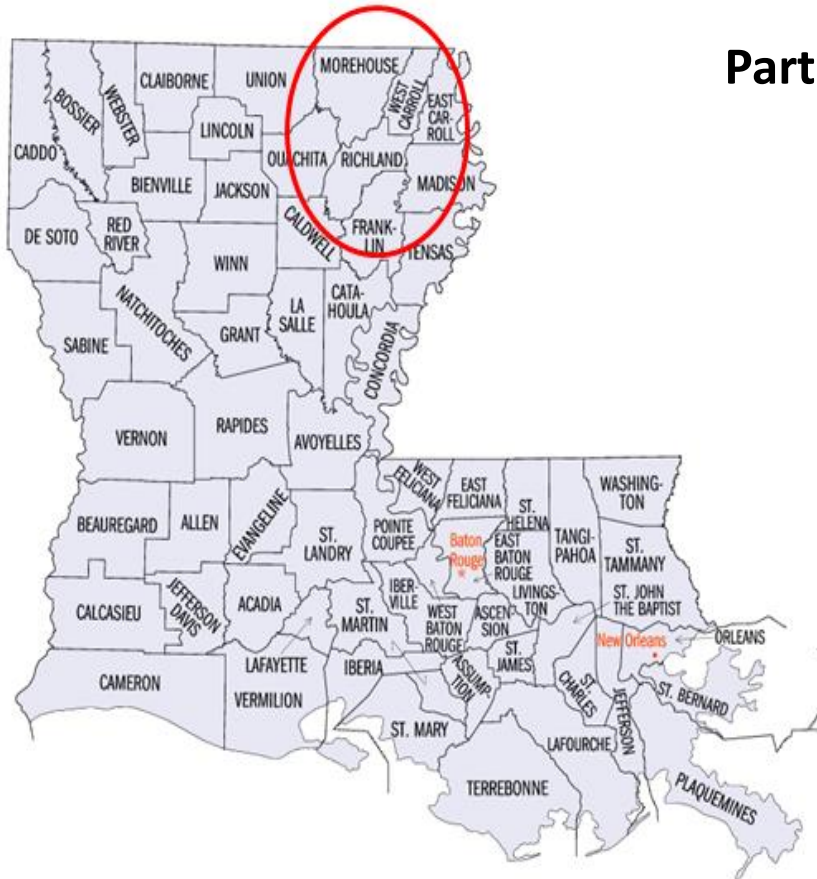
Featured Pilots

East Baton Rouge and Louisiana State University

Lincoln Parish and Louisiana Tech University

**Morehouse and Richland Parish and
University of Louisiana at Monroe**

Northeast Louisiana Consortium



Participating Partners

- Morehouse Parish Schools
- Richland Parish Schools
- University of Louisiana-Monroe

Important Phases of Communication

- Partnership Development Process
- Before Implementation
- Throughout Initiative

Northeast Louisiana Consortium

Partnership Development Process

- It was imperative to reflect the needs and desires of each partnering agency.
- The Project Director consulted with the superintendents from both districts to gain insight on expectations.
- The Project Director was also responsible for consulting with ULM to ensure that the proposal was aligned with accreditation standards regarding the placement of student interns and the qualifications of mentor teachers.
- This process was challenging, but communication among the various parties was vital for submitting an efficient and effective application.

Northeast Louisiana Consortium

Mission

- Strengthen the capacity of mentor teachers
- Implement a year-long residency for interns completing an undergraduate degree in elementary education

Northeast Louisiana Consortium

Before Implementation

- Officially notified of award amount- September 23, 2015
- Leadership Team- September 29, 2015 at ULM
- Revisited budget to match funding with expectations
- Established a tentative professional development calendar
- MPSB and RPSB reviewed lists of prospective mentor teachers based on ULM's criterion.

Northeast Louisiana Consortium

Tentative Professional Development Calendar

Date	Location	Topic	Attendees
November 14, 2015	RPSB	Co-Teaching	All Mentors
December 3, 2015	ULM	Co-Teaching Follow-up	Mentors with Interns only
March 1, 2016	ULM	Differentiation	All Mentors
Late Spring	RPSB	Classroom Management	All Mentors
Early Fall	MPSB	Student Engagement/ Flipped Classroom	All Mentors

Throughout Initiative

- Reminders
- Follow-ups
- Submission Protocol
- Shared Decision Making

Northeast Louisiana Consortium

Strengths

- Leadership Team
- Principal Support
- [Mentor Teacher & Intern](#)

Challenges

- Spring Placement

Looking Ahead

- Fall Placement Goals

Questions....