



TECHNOLOGY FOOTPRINT SNAPSHOT

RSD-NEW BEGINNINGS SCHOOLS FOUNDATION

Total Schools: 4

Total Students: 2019

Total Test Takers: 1409

OVERALL READINESS:  **MAKING PROGRESS**

[›Take a look closer at this District's Footprint‹](#)

[›See the Snapshot Legend‹](#)

DEVICES



In order to administer our state's upcoming online assessments, each school will need a minimum 7:1 student to device ratio. In 2014-15, students in grades 5-11 will be testing online. In 2015-16, students in grades 3-11 will be testing on-line. Many districts are aiming for an even lower ratio which will allow students to benefit from technology during their regular daily instruction. Districts have numerous options for personal computing devices to support both assessment and daily instruction, including laptops, tablets and traditional desktop computers.

District-owned Student Devices by Type



0

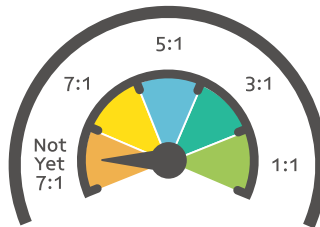


0



0

Students to Device Ratio



INTERNET BANDWIDTH



Bandwidth measures how much information can be transferred across an internet connection at one time. Schools that offer higher bandwidth ensure that the maximum number of students can benefit from online resources and tools via the Internet. In order for students to be able to test, schools will need a minimum of 50 kilobits per second (kbps) per student of internet bandwidth. In order for students to access the internet as part of their daily classroom instruction, State Education Technology Directors Association (SETDA) recommends 100 kbps per student as a standard.

MAKING PROGRESS

READY

EXCEEDING



NETWORK READINESS



Network readiness determines whether a school's internal network and/or a district's school-to-school network is able to support student learning and testing on either a wired or wireless infrastructure. A district is capable of supporting testing at the 7:1 non-cached mode for each of the network pieces (internet, WAN and LAN). Districts must consider both their Local Area Network (LAN) and the Wide Area Network (WAN) capacities and speed to ensure adequate student access.

LAN

MAKING PROGRESS

READY

EXCEEDING



WAN

MAKING PROGRESS

READY

EXCEEDING





TECHNOLOGY FOOTPRINT SNAPSHOT

LA SCHOOLS FOR THE DEAF AND VISUALLY IMPAIRED

Total Schools: 2

Total Students: 197

Total Test Takers: 147

OVERALL READINESS: **READY**

[Take a look closer at this District's Footprint](#)

[See the Snapshot Legend](#)

DEVICES



In order to administer our state's upcoming online assessments, each school will need a minimum 7:1 student to device ratio. In 2014-15, students in grades 5-11 will be testing online. In 2015-16, students in grades 3-11 will be testing on-line. Many districts are aiming for an even lower ratio which will allow students to benefit from technology during their regular daily instruction. Districts have numerous options for personal computing devices to support both assessment and daily instruction, including laptops, tablets and traditional desktop computers.

District-owned Student Devices by Type

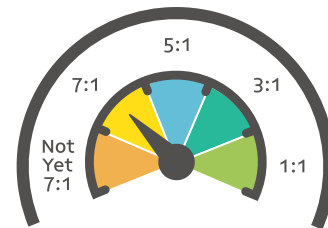


8

0

0

Students to Device Ratio



INTERNET BANDWIDTH



Bandwidth measures how much information can be transferred across an internet connection at one time. Schools that offer higher bandwidth ensure that the maximum number of students can benefit from online resources and tools via the Internet. In order for students to be able to test, schools will need a minimum of 50 kilobits per second (kbps) per student of internet bandwidth. In order for students to access the internet as part of their daily classroom instruction, State Education Technology Directors Association (SETDA) recommends 100 kbps per student as a standard.

MAKING PROGRESS

READY

EXCEEDING



NETWORK READINESS



Network readiness determines whether a school's internal network and/or a district's school-to-school network is able to support student learning and testing on either a wired or wireless infrastructure. A district is capable of supporting testing at the 7:1 non-cached mode for each of the network pieces (internet, WAN and LAN). Districts must consider both their Local Area Network (LAN) and the Wide Area Network (WAN) capacities and speed to ensure adequate student access.

LAN

MAKING PROGRESS

READY

EXCEEDING



WAN

MAKING PROGRESS

READY

EXCEEDING





TECHNOLOGY FOOTPRINT SNAPSHOT

V. B. GLENCOE CHARTER SCHOOL

Total Schools: 1

Total Students: 367

Total Test Takers: 253

OVERALL READINESS: MAKING PROGRESS

[›Take a look closer at this District’s Footprint‹](#)

[›See the Snapshot Legend‹](#)

DEVICES



In order to administer our state’s upcoming online assessments, each school will need a minimum 7:1 student to device ratio. In 2014-15, students in grades 5-11 will be testing online. In 2015-16, students in grades 3-11 will be testing on-line. Many districts are aiming for an even lower ratio which will allow students to benefit from technology during their regular daily instruction. Districts have numerous options for personal computing devices to support both assessment and daily instruction, including laptops, tablets and traditional desktop computers.

District-owned Student Devices by Type



22

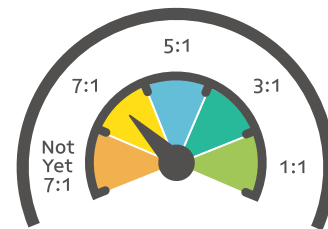


0



0

Students to Device Ratio



INTERNET BANDWIDTH



Bandwidth measures how much information can be transferred across an internet connection at one time. Schools that offer higher bandwidth ensure that the maximum number of students can benefit from online resources and tools via the Internet. In order for students to be able to test, schools will need a minimum of 50 kilobits per second (kbps) per student of internet bandwidth. In order for students to access the internet as part of their daily classroom instruction, State Education Technology Directors Association (SETDA) recommends 100 kbps per student as a standard.

Did not provide necessary data

NETWORK READINESS



Network readiness determines whether a school’s internal network and/or a district’s school-to-school network is able to support student learning and testing on either a wired or wireless infrastructure. A district is capable of supporting testing at the 7:1 non-cached mode for each of the network pieces (internet, WAN and LAN). Districts must consider both their Local Area Network (LAN) and the Wide Area Network (WAN) capacities and speed to ensure adequate student access.

LAN

Did not provide necessary data

WAN

Did not provide necessary data



TECHNOLOGY FOOTPRINT SNAPSHOT

INTERNATIONAL SCHOOL OF LOUISIANA

Total Schools: 1

Total Students: 826

Total Test Takers: 367

OVERALL READINESS: **READY**

[Take a look closer at this District's Footprint](#)

[See the Snapshot Legend](#)

DEVICES



In order to administer our state's upcoming online assessments, each school will need a minimum 7:1 student to device ratio. In 2014-15, students in grades 5-11 will be testing online. In 2015-16, students in grades 3-11 will be testing on-line. Many districts are aiming for an even lower ratio which will allow students to benefit from technology during their regular daily instruction. Districts have numerous options for personal computing devices to support both assessment and daily instruction, including laptops, tablets and traditional desktop computers.

District-owned Student Devices by Type



350

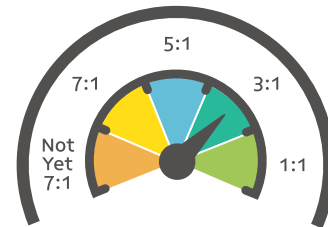


0



0

Students to Device Ratio



INTERNET BANDWIDTH



Bandwidth measures how much information can be transferred across an internet connection at one time. Schools that offer higher bandwidth ensure that the maximum number of students can benefit from online resources and tools via the Internet. In order for students to be able to test, schools will need a minimum of 50 kilobits per second (kbps) per student of internet bandwidth. In order for students to access the internet as part of their daily classroom instruction, State Education Technology Directors Association (SETDA) recommends 100 kbps per student as a standard.

MAKING PROGRESS

READY

EXCEEDING



NETWORK READINESS



Network readiness determines whether a school's internal network and/or a district's school-to-school network is able to support student learning and testing on either a wired or wireless infrastructure. A district is capable of supporting testing at the 7:1 non-cached mode for each of the network pieces (internet, WAN and LAN). Districts must consider both their Local Area Network (LAN) and the Wide Area Network (WAN) capacities and speed to ensure adequate student access.

LAN

MAKING PROGRESS

READY

EXCEEDING



WAN

MAKING PROGRESS

READY

EXCEEDING





TECHNOLOGY FOOTPRINT SNAPSHOT

DELHI CHARTER SCHOOL

Total Schools: 1

Total Students: 924

Total Test Takers: 652

OVERALL READINESS: **READY**

[Take a look closer at this District's Footprint](#)

[See the Snapshot Legend](#)

DEVICES



In order to administer our state's upcoming online assessments, each school will need a minimum 7:1 student to device ratio. In 2014-15, students in grades 5-11 will be testing online. In 2015-16, students in grades 3-11 will be testing on-line. Many districts are aiming for an even lower ratio which will allow students to benefit from technology during their regular daily instruction. Districts have numerous options for personal computing devices to support both assessment and daily instruction, including laptops, tablets and traditional desktop computers.

District-owned Student Devices by Type



146

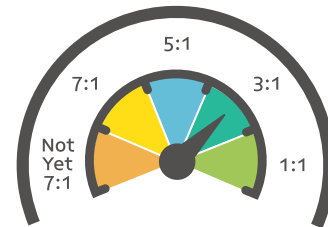


90



0

Students to Device Ratio



INTERNET BANDWIDTH



Bandwidth measures how much information can be transferred across an internet connection at one time. Schools that offer higher bandwidth ensure that the maximum number of students can benefit from online resources and tools via the Internet. In order for students to be able to test, schools will need a minimum of 50 kilobits per second (kbps) per student of internet bandwidth. In order for students to access the internet as part of their daily classroom instruction, State Education Technology Directors Association (SETDA) recommends 100 kbps per student as a standard.

MAKING PROGRESS

READY

EXCEEDING



NETWORK READINESS



Network readiness determines whether a school's internal network and/or a district's school-to-school network is able to support student learning and testing on either a wired or wireless infrastructure. A district is capable of supporting testing at the 7:1 non-cached mode for each of the network pieces (internet, WAN and LAN). Districts must consider both their Local Area Network (LAN) and the Wide Area Network (WAN) capacities and speed to ensure adequate student access.

LAN

MAKING PROGRESS

READY

EXCEEDING



WAN

MAKING PROGRESS

READY

EXCEEDING





TECHNOLOGY FOOTPRINT SNAPSHOT

BELLE CHASSE ACADEMY, INC.

Total Schools: 1

Total Students: 946

Total Test Takers: 648

OVERALL READINESS: **READY**

[Take a look closer at this District's Footprint](#)

[See the Snapshot Legend](#)

DEVICES



In order to administer our state's upcoming online assessments, each school will need a minimum 7:1 student to device ratio. In 2014-15, students in grades 5-11 will be testing online. In 2015-16, students in grades 3-11 will be testing on-line. Many districts are aiming for an even lower ratio which will allow students to benefit from technology during their regular daily instruction. Districts have numerous options for personal computing devices to support both assessment and daily instruction, including laptops, tablets and traditional desktop computers.

District-owned Student Devices by Type



83

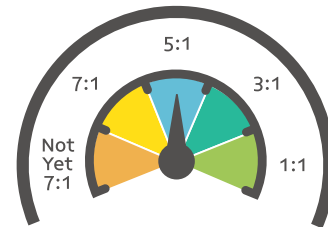


118



0

Students to Device Ratio



INTERNET BANDWIDTH



Bandwidth measures how much information can be transferred across an internet connection at one time. Schools that offer higher bandwidth ensure that the maximum number of students can benefit from online resources and tools via the Internet. In order for students to be able to test, schools will need a minimum of 50 kilobits per second (kbps) per student of internet bandwidth. In order for students to access the internet as part of their daily classroom instruction, State Education Technology Directors Association (SETDA) recommends 100 kbps per student as a standard.

MAKING PROGRESS

READY

EXCEEDING



NETWORK READINESS



Network readiness determines whether a school's internal network and/or a district's school-to-school network is able to support student learning and testing on either a wired or wireless infrastructure. A district is capable of supporting testing at the 7:1 non-cached mode for each of the network pieces (internet, WAN and LAN). Districts must consider both their Local Area Network (LAN) and the Wide Area Network (WAN) capacities and speed to ensure adequate student access.

LAN

MAKING PROGRESS

READY

EXCEEDING



WAN

MAKING PROGRESS

READY

EXCEEDING





TECHNOLOGY FOOTPRINT SNAPSHOT

MILESTONE SABIS ACADEMY OF NEW ORLEANS

Total Schools: 1

Total Students: 336

Total Test Takers: 241

OVERALL READINESS: **READY**

[Take a look closer at this District's Footprint](#)

[See the Snapshot Legend](#)

DEVICES



In order to administer our state's upcoming online assessments, each school will need a minimum 7:1 student to device ratio. In 2014-15, students in grades 5-11 will be testing online. In 2015-16, students in grades 3-11 will be testing on-line. Many districts are aiming for an even lower ratio which will allow students to benefit from technology during their regular daily instruction. Districts have numerous options for personal computing devices to support both assessment and daily instruction, including laptops, tablets and traditional desktop computers.

District-owned Student Devices by Type



49

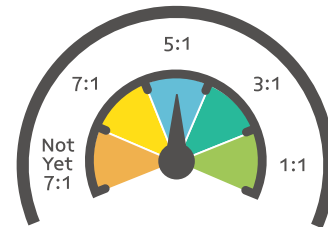


0



0

Students to Device Ratio



INTERNET BANDWIDTH



Bandwidth measures how much information can be transferred across an internet connection at one time. Schools that offer higher bandwidth ensure that the maximum number of students can benefit from online resources and tools via the Internet. In order for students to be able to test, schools will need a minimum of 50 kilobits per second (kbps) per student of internet bandwidth. In order for students to access the internet as part of their daily classroom instruction, State Education Technology Directors Association (SETDA) recommends 100 kbps per student as a standard.

MAKING PROGRESS

READY

EXCEEDING



NETWORK READINESS



Network readiness determines whether a school's internal network and/or a district's school-to-school network is able to support student learning and testing on either a wired or wireless infrastructure. A district is capable of supporting testing at the 7:1 non-cached mode for each of the network pieces (internet, WAN and LAN). Districts must consider both their Local Area Network (LAN) and the Wide Area Network (WAN) capacities and speed to ensure adequate student access.

LAN

MAKING PROGRESS

READY

EXCEEDING



WAN

MAKING PROGRESS

READY

EXCEEDING





TECHNOLOGY FOOTPRINT SNAPSHOT

LOUISIANA CONNECTIONS ACADEMY

Total Schools: 1

Total Students: 1200

Total Test Takers: 937

OVERALL READINESS: MAKING PROGRESS

[Take a look closer at this District's Footprint](#)

[See the Snapshot Legend](#)

DEVICES



In order to administer our state's upcoming online assessments, each school will need a minimum 7:1 student to device ratio. In 2014-15, students in grades 5-11 will be testing online. In 2015-16, students in grades 3-11 will be testing on-line. Many districts are aiming for an even lower ratio which will allow students to benefit from technology during their regular daily instruction. Districts have numerous options for personal computing devices to support both assessment and daily instruction, including laptops, tablets and traditional desktop computers.

District-owned Student Devices by Type



0

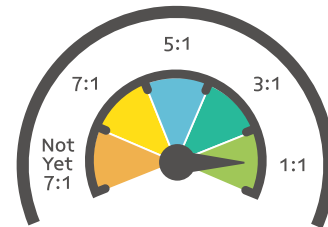


973



0

Students to Device Ratio



INTERNET BANDWIDTH



Bandwidth measures how much information can be transferred across an internet connection at one time. Schools that offer higher bandwidth ensure that the maximum number of students can benefit from online resources and tools via the Internet. In order for students to be able to test, schools will need a minimum of 50 kilobits per second (kbps) per student of internet bandwidth. In order for students to access the internet as part of their daily classroom instruction, State Education Technology Directors Association (SETDA) recommends 100 kbps per student as a standard.

Did not provide necessary data

NETWORK READINESS



Network readiness determines whether a school's internal network and/or a district's school-to-school network is able to support student learning and testing on either a wired or wireless infrastructure. A district is capable of supporting testing at the 7:1 non-cached mode for each of the network pieces (internet, WAN and LAN). Districts must consider both their Local Area Network (LAN) and the Wide Area Network (WAN) capacities and speed to ensure adequate student access.

LAN

Did not provide necessary data

WAN

Did not provide necessary data



TECHNOLOGY FOOTPRINT SNAPSHOT

NEW ORLEANS MILITARY/MARITIME ACADEMY

Total Schools: 1

Total Students: 360

Total Test Takers: 358

OVERALL READINESS: **READY**

[Take a look closer at this District's Footprint](#)

[See the Snapshot Legend](#)

DEVICES



In order to administer our state's upcoming online assessments, each school will need a minimum 7:1 student to device ratio. In 2014-15, students in grades 5-11 will be testing online. In 2015-16, students in grades 3-11 will be testing on-line. Many districts are aiming for an even lower ratio which will allow students to benefit from technology during their regular daily instruction. Districts have numerous options for personal computing devices to support both assessment and daily instruction, including laptops, tablets and traditional desktop computers.

District-owned Student Devices by Type



50

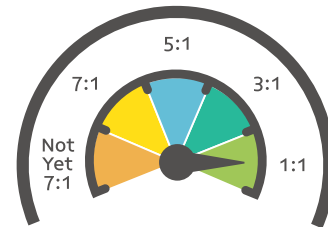


340



0

Students to Device Ratio



INTERNET BANDWIDTH



Bandwidth measures how much information can be transferred across an internet connection at one time. Schools that offer higher bandwidth ensure that the maximum number of students can benefit from online resources and tools via the Internet. In order for students to be able to test, schools will need a minimum of 50 kilobits per second (kbps) per student of internet bandwidth. In order for students to access the internet as part of their daily classroom instruction, State Education Technology Directors Association (SETDA) recommends 100 kbps per student as a standard.

MAKING PROGRESS

READY

EXCEEDING



NETWORK READINESS



Network readiness determines whether a school's internal network and/or a district's school-to-school network is able to support student learning and testing on either a wired or wireless infrastructure. A district is capable of supporting testing at the 7:1 non-cached mode for each of the network pieces (internet, WAN and LAN). Districts must consider both their Local Area Network (LAN) and the Wide Area Network (WAN) capacities and speed to ensure adequate student access.

LAN

MAKING PROGRESS

READY

EXCEEDING



WAN

MAKING PROGRESS

READY

EXCEEDING





TECHNOLOGY FOOTPRINT SNAPSHOT

RSD-CRESCENT CITY SCHOOLS

Total Schools: 2

Total Students: 924

Total Test Takers: 535

OVERALL READINESS: **READY**

[Take a look closer at this District's Footprint](#)

[See the Snapshot Legend](#)

DEVICES



In order to administer our state's upcoming online assessments, each school will need a minimum 7:1 student to device ratio. In 2014-15, students in grades 5-11 will be testing online. In 2015-16, students in grades 3-11 will be testing on-line. Many districts are aiming for an even lower ratio which will allow students to benefit from technology during their regular daily instruction. Districts have numerous options for personal computing devices to support both assessment and daily instruction, including laptops, tablets and traditional desktop computers.

District-owned Student Devices by Type



30

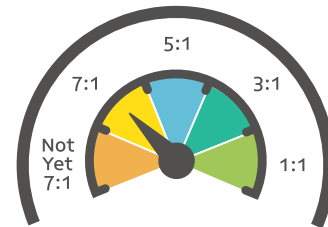


89



0

Students to Device Ratio



INTERNET BANDWIDTH



Bandwidth measures how much information can be transferred across an internet connection at one time. Schools that offer higher bandwidth ensure that the maximum number of students can benefit from online resources and tools via the Internet. In order for students to be able to test, schools will need a minimum of 50 kilobits per second (kbps) per student of internet bandwidth. In order for students to access the internet as part of their daily classroom instruction, State Education Technology Directors Association (SETDA) recommends 100 kbps per student as a standard.

MAKING PROGRESS

READY

EXCEEDING



NETWORK READINESS



Network readiness determines whether a school's internal network and/or a district's school-to-school network is able to support student learning and testing on either a wired or wireless infrastructure. A district is capable of supporting testing at the 7:1 non-cached mode for each of the network pieces (internet, WAN and LAN). Districts must consider both their Local Area Network (LAN) and the Wide Area Network (WAN) capacities and speed to ensure adequate student access.

LAN

MAKING PROGRESS

READY

EXCEEDING



WAN

MAKING PROGRESS

READY

EXCEEDING





TECHNOLOGY FOOTPRINT SNAPSHOT

RSD-SUCCESS PREPARATORY ACADEMY

Total Schools: 1

Total Students: 457

Total Test Takers: 287

OVERALL READINESS: **READY**

[Take a look closer at this District's Footprint](#)

[See the Snapshot Legend](#)

DEVICES



In order to administer our state's upcoming online assessments, each school will need a minimum 7:1 student to device ratio. In 2014-15, students in grades 5-11 will be testing online. In 2015-16, students in grades 3-11 will be testing on-line. Many districts are aiming for an even lower ratio which will allow students to benefit from technology during their regular daily instruction. Districts have numerous options for personal computing devices to support both assessment and daily instruction, including laptops, tablets and traditional desktop computers.

District-owned Student Devices by Type



70

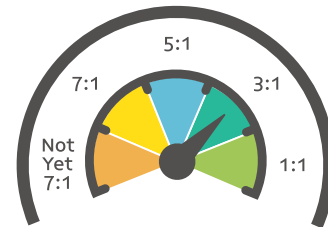


55



0

Students to Device Ratio



INTERNET BANDWIDTH



Bandwidth measures how much information can be transferred across an internet connection at one time. Schools that offer higher bandwidth ensure that the maximum number of students can benefit from online resources and tools via the Internet. In order for students to be able to test, schools will need a minimum of 50 kilobits per second (kbps) per student of internet bandwidth. In order for students to access the internet as part of their daily classroom instruction, State Education Technology Directors Association (SETDA) recommends 100 kbps per student as a standard.

MAKING PROGRESS

READY

EXCEEDING



NETWORK READINESS



Network readiness determines whether a school's internal network and/or a district's school-to-school network is able to support student learning and testing on either a wired or wireless infrastructure. A district is capable of supporting testing at the 7:1 non-cached mode for each of the network pieces (internet, WAN and LAN). Districts must consider both their Local Area Network (LAN) and the Wide Area Network (WAN) capacities and speed to ensure adequate student access.

LAN

MAKING PROGRESS

READY

EXCEEDING



WAN

MAKING PROGRESS

READY

EXCEEDING





TECHNOLOGY FOOTPRINT SNAPSHOT

RSD-AKILI ACADEMY OF NEW ORLEANS

Total Schools: 1

Total Students: 472

Total Test Takers: 271

OVERALL READINESS:  **MAKING PROGRESS**

[Take a look closer at this District's Footprint](#)

[See the Snapshot Legend](#)

DEVICES



In order to administer our state's upcoming online assessments, each school will need a minimum 7:1 student to device ratio. In 2014-15, students in grades 5-11 will be testing online. In 2015-16, students in grades 3-11 will be testing on-line. Many districts are aiming for an even lower ratio which will allow students to benefit from technology during their regular daily instruction. Districts have numerous options for personal computing devices to support both assessment and daily instruction, including laptops, tablets and traditional desktop computers.

District-owned Student Devices by Type



0

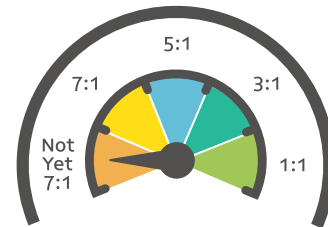


30



0

Students to Device Ratio



INTERNET BANDWIDTH



Bandwidth measures how much information can be transferred across an internet connection at one time. Schools that offer higher bandwidth ensure that the maximum number of students can benefit from online resources and tools via the Internet. In order for students to be able to test, schools will need a minimum of 50 kilobits per second (kbps) per student of internet bandwidth. In order for students to access the internet as part of their daily classroom instruction, State Education Technology Directors Association (SETDA) recommends 100 kbps per student as a standard.

MAKING PROGRESS

READY

EXCEEDING



NETWORK READINESS



Network readiness determines whether a school's internal network and/or a district's school-to-school network is able to support student learning and testing on either a wired or wireless infrastructure. A district is capable of supporting testing at the 7:1 non-cached mode for each of the network pieces (internet, WAN and LAN). Districts must consider both their Local Area Network (LAN) and the Wide Area Network (WAN) capacities and speed to ensure adequate student access.

LAN

MAKING PROGRESS

READY

EXCEEDING



WAN

MAKING PROGRESS

READY

EXCEEDING





TECHNOLOGY FOOTPRINT SNAPSHOT

RSD-COLLEGIATE ACADEMIES

Total Schools: 3

Total Students: 854

Total Test Takers: 761

OVERALL READINESS: **READY**

[Take a look closer at this District's Footprint](#)

[See the Snapshot Legend](#)

DEVICES



In order to administer our state's upcoming online assessments, each school will need a minimum 7:1 student to device ratio. In 2014-15, students in grades 5-11 will be testing online. In 2015-16, students in grades 3-11 will be testing on-line. Many districts are aiming for an even lower ratio which will allow students to benefit from technology during their regular daily instruction. Districts have numerous options for personal computing devices to support both assessment and daily instruction, including laptops, tablets and traditional desktop computers.

District-owned Student Devices by Type

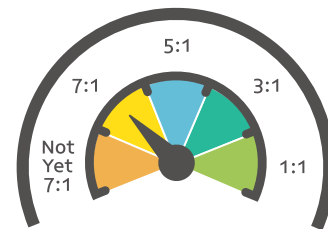


15

191

59

Students to Device Ratio



INTERNET BANDWIDTH



Bandwidth measures how much information can be transferred across an internet connection at one time. Schools that offer higher bandwidth ensure that the maximum number of students can benefit from online resources and tools via the Internet. In order for students to be able to test, schools will need a minimum of 50 kilobits per second (kbps) per student of internet bandwidth. In order for students to access the internet as part of their daily classroom instruction, State Education Technology Directors Association (SETDA) recommends 100 kbps per student as a standard.

MAKING PROGRESS

READY

EXCEEDING



NETWORK READINESS



Network readiness determines whether a school's internal network and/or a district's school-to-school network is able to support student learning and testing on either a wired or wireless infrastructure. A district is capable of supporting testing at the 7:1 non-cached mode for each of the network pieces (internet, WAN and LAN). Districts must consider both their Local Area Network (LAN) and the Wide Area Network (WAN) capacities and speed to ensure adequate student access.

LAN

MAKING PROGRESS

READY

EXCEEDING



WAN

MAKING PROGRESS

READY

EXCEEDING





TECHNOLOGY FOOTPRINT SNAPSHOT

RSD-NEW ORLEANS COLLEGE PREPARATORY ACADEMIES

Total Schools: 3

Total Students: 1173

Total Test Takers: 738

OVERALL READINESS: **READY**

[Take a look closer at this District's Footprint](#)

[See the Snapshot Legend](#)

DEVICES



In order to administer our state's upcoming online assessments, each school will need a minimum 7:1 student to device ratio. In 2014-15, students in grades 5-11 will be testing online. In 2015-16, students in grades 3-11 will be testing on-line. Many districts are aiming for an even lower ratio which will allow students to benefit from technology during their regular daily instruction. Districts have numerous options for personal computing devices to support both assessment and daily instruction, including laptops, tablets and traditional desktop computers.

District-owned Student Devices by Type



0

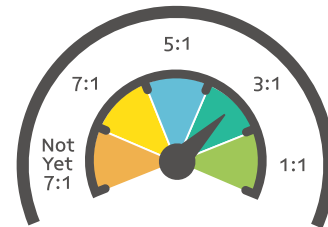


690



0

Students to Device Ratio



INTERNET BANDWIDTH



Bandwidth measures how much information can be transferred across an internet connection at one time. Schools that offer higher bandwidth ensure that the maximum number of students can benefit from online resources and tools via the Internet. In order for students to be able to test, schools will need a minimum of 50 kilobits per second (kbps) per student of internet bandwidth. In order for students to access the internet as part of their daily classroom instruction, State Education Technology Directors Association (SETDA) recommends 100 kbps per student as a standard.

MAKING PROGRESS

READY

EXCEEDING



NETWORK READINESS



Network readiness determines whether a school's internal network and/or a district's school-to-school network is able to support student learning and testing on either a wired or wireless infrastructure. A district is capable of supporting testing at the 7:1 non-cached mode for each of the network pieces (internet, WAN and LAN). Districts must consider both their Local Area Network (LAN) and the Wide Area Network (WAN) capacities and speed to ensure adequate student access.

LAN

MAKING PROGRESS

READY

EXCEEDING



WAN

MAKING PROGRESS

READY

EXCEEDING





TECHNOLOGY FOOTPRINT SNAPSHOT

RSD-FRIENDS OF KING

Total Schools: 1

Total Students: 799

Total Test Takers: 471

OVERALL READINESS: **MAKING PROGRESS**

[Take a look closer at this District's Footprint](#)

[See the Snapshot Legend](#)

DEVICES



In order to administer our state's upcoming online assessments, each school will need a minimum 7:1 student to device ratio. In 2014-15, students in grades 5-11 will be testing online. In 2015-16, students in grades 3-11 will be testing on-line. Many districts are aiming for an even lower ratio which will allow students to benefit from technology during their regular daily instruction. Districts have numerous options for personal computing devices to support both assessment and daily instruction, including laptops, tablets and traditional desktop computers.

District-owned Student Devices by Type



0

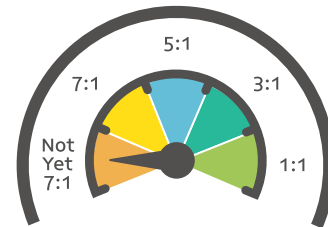


0



0

Students to Device Ratio



INTERNET BANDWIDTH



Bandwidth measures how much information can be transferred across an internet connection at one time. Schools that offer higher bandwidth ensure that the maximum number of students can benefit from online resources and tools via the Internet. In order for students to be able to test, schools will need a minimum of 50 kilobits per second (kbps) per student of internet bandwidth. In order for students to access the internet as part of their daily classroom instruction, State Education Technology Directors Association (SETDA) recommends 100 kbps per student as a standard.

MAKING PROGRESS

READY

EXCEEDING



NETWORK READINESS



Network readiness determines whether a school's internal network and/or a district's school-to-school network is able to support student learning and testing on either a wired or wireless infrastructure. A district is capable of supporting testing at the 7:1 non-cached mode for each of the network pieces (internet, WAN and LAN). Districts must consider both their Local Area Network (LAN) and the Wide Area Network (WAN) capacities and speed to ensure adequate student access.

LAN

MAKING PROGRESS

READY

EXCEEDING



WAN

MAKING PROGRESS

READY

EXCEEDING





TECHNOLOGY FOOTPRINT SNAPSHOT

RSD-CHOICE FOUNDATION

Total Schools: 3

Total Students: 1872

Total Test Takers: 1189

OVERALL READINESS: **READY**

[Take a look closer at this District's Footprint](#)

[See the Snapshot Legend](#)

DEVICES



In order to administer our state's upcoming online assessments, each school will need a minimum 7:1 student to device ratio. In 2014-15, students in grades 5-11 will be testing online. In 2015-16, students in grades 3-11 will be testing on-line. Many districts are aiming for an even lower ratio which will allow students to benefit from technology during their regular daily instruction. Districts have numerous options for personal computing devices to support both assessment and daily instruction, including laptops, tablets and traditional desktop computers.

District-owned Student Devices by Type



70

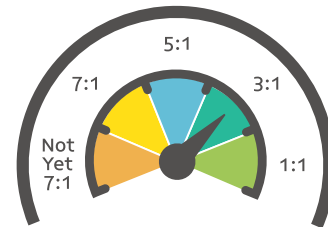


556



0

Students to Device Ratio



INTERNET BANDWIDTH



Bandwidth measures how much information can be transferred across an internet connection at one time. Schools that offer higher bandwidth ensure that the maximum number of students can benefit from online resources and tools via the Internet. In order for students to be able to test, schools will need a minimum of 50 kilobits per second (kbps) per student of internet bandwidth. In order for students to access the internet as part of their daily classroom instruction, State Education Technology Directors Association (SETDA) recommends 100 kbps per student as a standard.

Did not provide necessary data

NETWORK READINESS



Network readiness determines whether a school's internal network and/or a district's school-to-school network is able to support student learning and testing on either a wired or wireless infrastructure. A district is capable of supporting testing at the 7:1 non-cached mode for each of the network pieces (internet, WAN and LAN). Districts must consider both their Local Area Network (LAN) and the Wide Area Network (WAN) capacities and speed to ensure adequate student access.

LAN

Did not provide necessary data

WAN

Did not provide necessary data



TECHNOLOGY FOOTPRINT SNAPSHOT

RSD-FIRSTLINE SCHOOLS, INC.

Total Schools: 4

Total Students: 1997

Total Test Takers: 1371

OVERALL READINESS: **READY**

[Take a look closer at this District's Footprint](#)

[See the Snapshot Legend](#)

DEVICES



In order to administer our state's upcoming online assessments, each school will need a minimum 7:1 student to device ratio. In 2014-15, students in grades 5-11 will be testing online. In 2015-16, students in grades 3-11 will be testing on-line. Many districts are aiming for an even lower ratio which will allow students to benefit from technology during their regular daily instruction. Districts have numerous options for personal computing devices to support both assessment and daily instruction, including laptops, tablets and traditional desktop computers.

District-owned Student Devices by Type



235

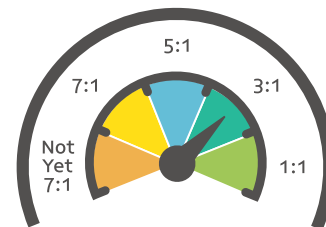


790



0

Students to Device Ratio



INTERNET BANDWIDTH



Bandwidth measures how much information can be transferred across an internet connection at one time. Schools that offer higher bandwidth ensure that the maximum number of students can benefit from online resources and tools via the Internet. In order for students to be able to test, schools will need a minimum of 50 kilobits per second (kbps) per student of internet bandwidth. In order for students to access the internet as part of their daily classroom instruction, State Education Technology Directors Association (SETDA) recommends 100 kbps per student as a standard.

MAKING
PROGRESS

READY

EXCEEDING



NETWORK READINESS



Network readiness determines whether a school's internal network and/or a district's school-to-school network is able to support student learning and testing on either a wired or wireless infrastructure. A district is capable of supporting testing at the 7:1 non-cached mode for each of the network pieces (internet, WAN and LAN). Districts must consider both their Local Area Network (LAN) and the Wide Area Network (WAN) capacities and speed to ensure adequate student access.

LAN

MAKING
PROGRESS

READY

EXCEEDING



WAN

MAKING
PROGRESS

READY

EXCEEDING

