



# TECHNOLOGY FOOTPRINT SNAPSHOT

## CITY OF MONROE SCHOOL DISTRICT

Total Schools: 17

Total Students: 7,286

Total Test Takers: 4,464

OVERALL READINESS: **READY**

[Take a look closer at this District's Footprint](#)

[See the Snapshot Legend](#)

### DEVICES



In order to administer our state's upcoming online assessments, each school will need a minimum 7:1 student to device ratio. In 2014-15, students in grades 5-11 will be testing online. In 2015-16, students in grades 3-11 will be testing on-line. Many districts are aiming for an even lower ratio which will allow students to benefit from technology during their regular daily instruction. Districts have numerous options for personal computing devices to support both assessment and daily instruction, including laptops, tablets and traditional desktop computers.

#### District-owned Student Devices by Type

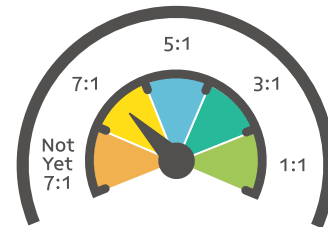


987

0

0

#### Students to Device Ratio



### INTERNET BANDWIDTH



Bandwidth measures how much information can be transferred across an internet connection at one time. Schools that offer higher bandwidth ensure that the maximum number of students can benefit from online resources and tools via the Internet. In order for students to be able to test, schools will need a minimum of 50 kilobits per second (kbps) per student of internet bandwidth. In order for students to access the internet as part of their daily classroom instruction, State Education Technology Directors Association (SETDA) recommends 100 kbps per student as a standard.

MAKING PROGRESS

READY

EXCEEDING



### NETWORK READINESS



Network readiness determines whether a school's internal network and/or a district's school-to-school network is able to support student learning and testing on either a wired or wireless infrastructure. A district is capable of supporting testing at the 7:1 non-cached mode for each of the network pieces (internet, WAN and LAN). Districts must consider both their Local Area Network (LAN) and the Wide Area Network (WAN) capacities and speed to ensure adequate student access.

LAN

WAN

MAKING PROGRESS

READY

EXCEEDING

MAKING PROGRESS

READY

EXCEEDING

