



TECHNOLOGY FOOTPRINT SNAPSHOT

ACADIA PARISH

Total Schools: 32
Total Students: 9910
Total Test Takers: 7172

OVERALL READINESS: **READY**

DEVICES



Over the past 6 years, Louisiana's schools have substantially expanded student device access for daily classroom instruction and school assessments. Districts across the state are meeting these expectations through lowering student-to-device ratios to support daily instruction and learning. Districts offer a variety of personal computing devices, including laptops, tablets and traditional desktop computers, to meet their educational goals.

Student Devices by Type



1331



3965



0

Students to Device Ratio



INTERNET BANDWIDTH



Bandwidth measures how much information can be transferred across an internet connection at one time. Schools that offer higher bandwidth ensure that the maximum number of students can benefit from online resources and tools via the Internet. Louisiana's statewide assessments only require 50 kilobits per second (kbps) of internet bandwidth per student; however accessing the Internet as part of daily classroom instruction is better supported by a 100 kbps or more bandwidth per student.

MAKING PROGRESS

READY

EXCEEDING



NETWORK READINESS



Network readiness determines whether a school's internal network and/or district's school-to-school wide area network is able to support student educational activities. District networks should be capable of supporting both current network connectivity of 1 Gbps and future instructional requirements, devices, and technology rich resources of 10 Gbps or more.

MAKING PROGRESS

READY

EXCEEDING





TECHNOLOGY FOOTPRINT SNAPSHOT

ALLEN PARISH

Total Schools: 12
Total Students: 4337
Total Test Takers: 3062

OVERALL READINESS: **READY**

DEVICES



Over the past 6 years, Louisiana’s schools have substantially expanded student device access for daily classroom instruction and school assessments. Districts across the state are meeting these expectations through lowering student-to-device ratios to support daily instruction and learning. Districts offer a variety of personal computing devices, including laptops, tablets and traditional desktop computers, to meet their educational goals.

Student Devices by Type



1060

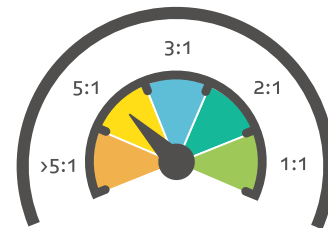


0



0

Students to Device Ratio



INTERNET BANDWIDTH



Bandwidth measures how much information can be transferred across an internet connection at one time. Schools that offer higher bandwidth ensure that the maximum number of students can benefit from online resources and tools via the Internet. Louisiana’s statewide assessments only require 50 kilobits per second (kbps) of internet bandwidth per student; however accessing the Internet as part of daily classroom instruction is better supported by a 100 kbps or more bandwidth per student.

MAKING
PROGRESS

READY

EXCEEDING



NETWORK READINESS



Network readiness determines whether a school’s internal network and/or district’s school-to-school wide area network is able to support student educational activities. District networks should be capable of supporting both current network connectivity of 1 Gbps and future instructional requirements, devices, and technology rich resources of 10 Gbps or more.

MAKING
PROGRESS

READY

EXCEEDING





TECHNOLOGY FOOTPRINT SNAPSHOT

ASCENSION PARISH SCHOOLS

Total Schools: 28
Total Students: 22536
Total Test Takers: 16853

OVERALL READINESS: **READY**

DEVICES



Over the past 6 years, Louisiana’s schools have substantially expanded student device access for daily classroom instruction and school assessments. Districts across the state are meeting these expectations through lowering student-to-device ratios to support daily instruction and learning. Districts offer a variety of personal computing devices, including laptops, tablets and traditional desktop computers, to meet their educational goals.

Student Devices by Type

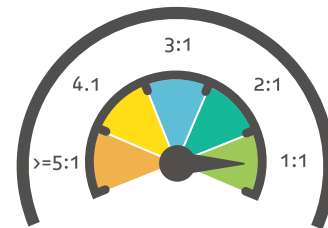


705

24255

0

Students to Device Ratio



INTERNET BANDWIDTH



Bandwidth measures how much information can be transferred across an internet connection at one time. Schools that offer higher bandwidth ensure that the maximum number of students can benefit from online resources and tools via the Internet. Louisiana’s statewide assessments only require 50 kilobits per second (kbps) of internet bandwidth per student; however accessing the Internet as part of daily classroom instruction is better supported by a 100 kbps or more bandwidth per student.

MAKING PROGRESS

READY

EXCEEDING



NETWORK READINESS



Network readiness determines whether a school’s internal network and/or district’s school-to-school wide area network is able to support student educational activities. District networks should be capable of supporting both current network connectivity of 1 Gbps and future instructional requirements, devices, and technology rich resources of 10 Gbps or more.

MAKING PROGRESS

READY

EXCEEDING





TECHNOLOGY FOOTPRINT SNAPSHOT

ASSUMPTION PARISH SCHOOLS

Total Schools: 10
Total Students: 3499
Total Test Takers: 2489

OVERALL READINESS: **READY**

DEVICES



Over the past 6 years, Louisiana's schools have substantially expanded student device access for daily classroom instruction and school assessments. Districts across the state are meeting these expectations through lowering student-to-device ratios to support daily instruction and learning. Districts offer a variety of personal computing devices, including laptops, tablets and traditional desktop computers, to meet their educational goals.

Student Devices by Type

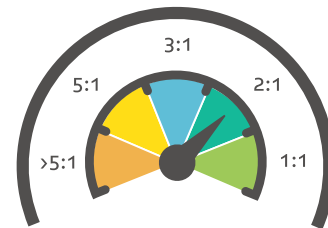


1932

0

0

Students to Device Ratio



INTERNET BANDWIDTH



Bandwidth measures how much information can be transferred across an internet connection at one time. Schools that offer higher bandwidth ensure that the maximum number of students can benefit from online resources and tools via the Internet. Louisiana's statewide assessments only require 50 kilobits per second (kbps) of internet bandwidth per student; however accessing the Internet as part of daily classroom instruction is better supported by a 100 kbps or more bandwidth per student.

MAKING PROGRESS

READY

EXCEEDING



NETWORK READINESS



Network readiness determines whether a school's internal network and/or district's school-to-school wide area network is able to support student educational activities. District networks should be capable of supporting both current network connectivity of 1 Gbps and future instructional requirements, devices, and technology rich resources of 10 Gbps or more.

MAKING PROGRESS

READY

EXCEEDING





TECHNOLOGY FOOTPRINT SNAPSHOT

AVOYELLES PARISH

Total Schools: 11

Total Students: 5458

Total Test Takers: 3950

OVERALL READINESS: **READY**

DEVICES



Over the past 6 years, Louisiana’s schools have substantially expanded student device access for daily classroom instruction and school assessments. Districts across the state are meeting these expectations through lowering student-to-device ratios to support daily instruction and learning. Districts offer a variety of personal computing devices, including laptops, tablets and traditional desktop computers, to meet their educational goals.

Student Devices by Type



892

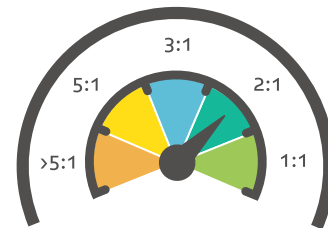


1809



0

Students to Device Ratio



INTERNET BANDWIDTH



Bandwidth measures how much information can be transferred across an internet connection at one time. Schools that offer higher bandwidth ensure that the maximum number of students can benefit from online resources and tools via the Internet. Louisiana’s statewide assessments only require 50 kilobits per second (kbps) of internet bandwidth per student; however accessing the Internet as part of daily classroom instruction is better supported by a 100 kbps or more bandwidth per student.

MAKING PROGRESS

READY

EXCEEDING



NETWORK READINESS



Network readiness determines whether a school’s internal network and/or district’s school-to-school wide area network is able to support student educational activities. District networks should be capable of supporting both current network connectivity of 1 Gbps and future instructional requirements, devices, and technology rich resources of 10 Gbps or more.

MAKING PROGRESS

READY

EXCEEDING





TECHNOLOGY FOOTPRINT SNAPSHOT

BEAUREGARD PARISH

Total Schools: 12
Total Students: 6056
Total Test Takers: 4503

OVERALL READINESS: **READY**

DEVICES



Over the past 6 years, Louisiana’s schools have substantially expanded student device access for daily classroom instruction and school assessments. Districts across the state are meeting these expectations through lowering student-to-device ratios to support daily instruction and learning. Districts offer a variety of personal computing devices, including laptops, tablets and traditional desktop computers, to meet their educational goals.

Student Devices by Type



1579

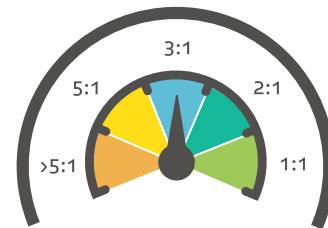


108



0

Students to Device Ratio



INTERNET BANDWIDTH



Bandwidth measures how much information can be transferred across an internet connection at one time. Schools that offer higher bandwidth ensure that the maximum number of students can benefit from online resources and tools via the Internet. Louisiana’s statewide assessments only require 50 kilobits per second (kbps) of internet bandwidth per student; however accessing the Internet as part of daily classroom instruction is better supported by a 100 kbps or more bandwidth per student.

MAKING PROGRESS

READY

EXCEEDING



NETWORK READINESS



Network readiness determines whether a school’s internal network and/or district’s school-to-school wide area network is able to support student educational activities. District networks should be capable of supporting both current network connectivity of 1 Gbps and future instructional requirements, devices, and technology rich resources of 10 Gbps or more.

MAKING PROGRESS

READY

EXCEEDING





TECHNOLOGY FOOTPRINT SNAPSHOT

BIENVILLE PARISH SCHOOLS

Total Schools: 9
Total Students: 2273
Total Test Takers: 1603

OVERALL READINESS: **READY**

DEVICES



Over the past 6 years, Louisiana’s schools have substantially expanded student device access for daily classroom instruction and school assessments. Districts across the state are meeting these expectations through lowering student-to-device ratios to support daily instruction and learning. Districts offer a variety of personal computing devices, including laptops, tablets and traditional desktop computers, to meet their educational goals.

Student Devices by Type



442

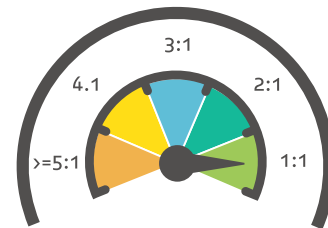


2176



271

Students to Device Ratio



INTERNET BANDWIDTH



Bandwidth measures how much information can be transferred across an internet connection at one time. Schools that offer higher bandwidth ensure that the maximum number of students can benefit from online resources and tools via the Internet. Louisiana’s statewide assessments only require 50 kilobits per second (kbps) of internet bandwidth per student; however accessing the Internet as part of daily classroom instruction is better supported by a 100 kbps or more bandwidth per student.

MAKING PROGRESS

READY

EXCEEDING



NETWORK READINESS



Network readiness determines whether a school’s internal network and/or district’s school-to-school wide area network is able to support student educational activities. District networks should be capable of supporting both current network connectivity of 1 Gbps and future instructional requirements, devices, and technology rich resources of 10 Gbps or more.

MAKING PROGRESS

READY

EXCEEDING





TECHNOLOGY FOOTPRINT SNAPSHOT

BOSSIER PARISH SCHOOLS

Total Schools: 34
Total Students: 22759
Total Test Takers: 16765

OVERALL READINESS: **MAKING PROGRESS**

DEVICES



Over the past 6 years, Louisiana’s schools have substantially expanded student device access for daily classroom instruction and school assessments. Districts across the state are meeting these expectations through lowering student-to-device ratios to support daily instruction and learning. Districts offer a variety of personal computing devices, including laptops, tablets and traditional desktop computers, to meet their educational goals.

Student Devices by Type



4368

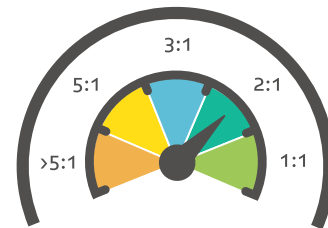


10685



0

Students to Device Ratio



INTERNET BANDWIDTH



Bandwidth measures how much information can be transferred across an internet connection at one time. Schools that offer higher bandwidth ensure that the maximum number of students can benefit from online resources and tools via the Internet. Louisiana’s statewide assessments only require 50 kilobits per second (kbps) of internet bandwidth per student; however accessing the Internet as part of daily classroom instruction is better supported by a 100 kbps or more bandwidth per student.



NETWORK READINESS



Network readiness determines whether a school’s internal network and/or district’s school-to-school wide area network is able to support student educational activities. District networks should be capable of supporting both current network connectivity of 1 Gbps and future instructional requirements, devices, and technology rich resources of 10 Gbps or more.





TECHNOLOGY FOOTPRINT SNAPSHOT

CADDO PARISH

Total Schools: 64
Total Students: 39708
Total Test Takers: 29298

OVERALL READINESS: **READY**

DEVICES



Over the past 6 years, Louisiana's schools have substantially expanded student device access for daily classroom instruction and school assessments. Districts across the state are meeting these expectations through lowering student-to-device ratios to support daily instruction and learning. Districts offer a variety of personal computing devices, including laptops, tablets and traditional desktop computers, to meet their educational goals.

Student Devices by Type



6514



5557



6349

Students to Device Ratio



INTERNET BANDWIDTH



Bandwidth measures how much information can be transferred across an internet connection at one time. Schools that offer higher bandwidth ensure that the maximum number of students can benefit from online resources and tools via the Internet. Louisiana's statewide assessments only require 50 kilobits per second (kbps) of internet bandwidth per student; however accessing the Internet as part of daily classroom instruction is better supported by a 100 kbps or more bandwidth per student.

MAKING PROGRESS

READY

EXCEEDING



NETWORK READINESS



Network readiness determines whether a school's internal network and/or district's school-to-school wide area network is able to support student educational activities. District networks should be capable of supporting both current network connectivity of 1 Gbps and future instructional requirements, devices, and technology rich resources of 10 Gbps or more.

MAKING PROGRESS

READY

EXCEEDING





TECHNOLOGY FOOTPRINT SNAPSHOT

CALCASIEU PARISH SCHOOL DISTRICT

Total Schools: 60
Total Students: 33119
Total Test Takers: 23613

OVERALL READINESS: **MAKING PROGRESS**

DEVICES



Over the past 6 years, Louisiana’s schools have substantially expanded student device access for daily classroom instruction and school assessments. Districts across the state are meeting these expectations through lowering student-to-device ratios to support daily instruction and learning. Districts offer a variety of personal computing devices, including laptops, tablets and traditional desktop computers, to meet their educational goals.

Student Devices by Type

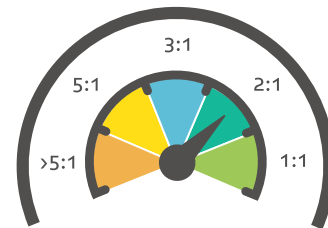


8845

8024

0

Students to Device Ratio



INTERNET BANDWIDTH



Bandwidth measures how much information can be transferred across an internet connection at one time. Schools that offer higher bandwidth ensure that the maximum number of students can benefit from online resources and tools via the Internet. Louisiana’s statewide assessments only require 50 kilobits per second (kbps) of internet bandwidth per student; however accessing the Internet as part of daily classroom instruction is better supported by a 100 kbps or more bandwidth per student.



NETWORK READINESS



Network readiness determines whether a school’s internal network and/or district’s school-to-school wide area network is able to support student educational activities. District networks should be capable of supporting both current network connectivity of 1 Gbps and future instructional requirements, devices, and technology rich resources of 10 Gbps or more.





TECHNOLOGY FOOTPRINT SNAPSHOT

CALDWELL PARISH SCHOOLS

Total Schools: 8
Total Students: 1720
Total Test Takers: 1179

OVERALL READINESS: **READY**

DEVICES



Over the past 6 years, Louisiana's schools have substantially expanded student device access for daily classroom instruction and school assessments. Districts across the state are meeting these expectations through lowering student-to-device ratios to support daily instruction and learning. Districts offer a variety of personal computing devices, including laptops, tablets and traditional desktop computers, to meet their educational goals.

Student Devices by Type



262

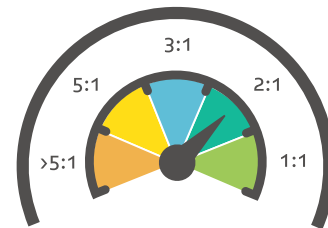


797



40

Students to Device Ratio



INTERNET BANDWIDTH



Bandwidth measures how much information can be transferred across an internet connection at one time. Schools that offer higher bandwidth ensure that the maximum number of students can benefit from online resources and tools via the Internet. Louisiana's statewide assessments only require 50 kilobits per second (kbps) of internet bandwidth per student; however accessing the Internet as part of daily classroom instruction is better supported by a 100 kbps or more bandwidth per student.

MAKING PROGRESS

READY

EXCEEDING



NETWORK READINESS



Network readiness determines whether a school's internal network and/or district's school-to-school wide area network is able to support student educational activities. District networks should be capable of supporting both current network connectivity of 1 Gbps and future instructional requirements, devices, and technology rich resources of 10 Gbps or more.

MAKING PROGRESS

READY

EXCEEDING





TECHNOLOGY FOOTPRINT SNAPSHOT

CAMERON PARISH SCHOOLS

Total Schools: 4
Total Students: 1363
Total Test Takers: 991

OVERALL READINESS: **READY**

DEVICES



Over the past 6 years, Louisiana's schools have substantially expanded student device access for daily classroom instruction and school assessments. Districts across the state are meeting these expectations through lowering student-to-device ratios to support daily instruction and learning. Districts offer a variety of personal computing devices, including laptops, tablets and traditional desktop computers, to meet their educational goals.

Student Devices by Type

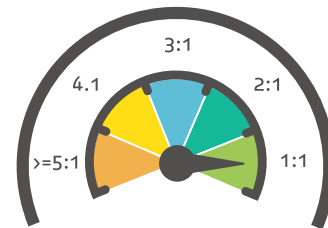


47

919

1364

Students to Device Ratio



INTERNET BANDWIDTH



Bandwidth measures how much information can be transferred across an internet connection at one time. Schools that offer higher bandwidth ensure that the maximum number of students can benefit from online resources and tools via the Internet. Louisiana's statewide assessments only require 50 kilobits per second (kbps) of internet bandwidth per student; however accessing the Internet as part of daily classroom instruction is better supported by a 100 kbps or more bandwidth per student.

MAKING PROGRESS

READY

EXCEEDING



NETWORK READINESS



Network readiness determines whether a school's internal network and/or district's school-to-school wide area network is able to support student educational activities. District networks should be capable of supporting both current network connectivity of 1 Gbps and future instructional requirements, devices, and technology rich resources of 10 Gbps or more.

MAKING PROGRESS

READY

EXCEEDING





TECHNOLOGY FOOTPRINT SNAPSHOT

CATAHOULA PARISH SCHOOLS

Total Schools: 6
Total Students: 1276
Total Test Takers: 925

OVERALL READINESS:  **MAKING PROGRESS**

DEVICES



Over the past 6 years, Louisiana's schools have substantially expanded student device access for daily classroom instruction and school assessments. Districts across the state are meeting these expectations through lowering student-to-device ratios to support daily instruction and learning. Districts offer a variety of personal computing devices, including laptops, tablets and traditional desktop computers, to meet their educational goals.

Student Devices by Type



425

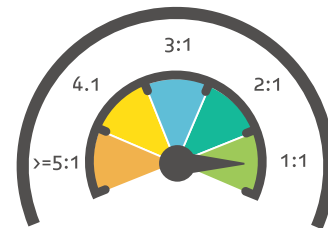


1587



470

Students to Device Ratio



INTERNET BANDWIDTH



Bandwidth measures how much information can be transferred across an internet connection at one time. Schools that offer higher bandwidth ensure that the maximum number of students can benefit from online resources and tools via the Internet. Louisiana's statewide assessments only require 50 kilobits per second (kbps) of internet bandwidth per student; however accessing the Internet as part of daily classroom instruction is better supported by a 100 kbps or more bandwidth per student.

MAKING PROGRESS

READY

EXCEEDING



NETWORK READINESS



Network readiness determines whether a school's internal network and/or district's school-to-school wide area network is able to support student educational activities. District networks should be capable of supporting both current network connectivity of 1 Gbps and future instructional requirements, devices, and technology rich resources of 10 Gbps or more.

MAKING PROGRESS

READY

EXCEEDING





TECHNOLOGY FOOTPRINT SNAPSHOT

CLAIBORNE PARISH SCHOOLS

Total Schools: 7
Total Students: 1748
Total Test Takers: 1236

OVERALL READINESS: **READY**

DEVICES



Over the past 6 years, Louisiana's schools have substantially expanded student device access for daily classroom instruction and school assessments. Districts across the state are meeting these expectations through lowering student-to-device ratios to support daily instruction and learning. Districts offer a variety of personal computing devices, including laptops, tablets and traditional desktop computers, to meet their educational goals.

Student Devices by Type

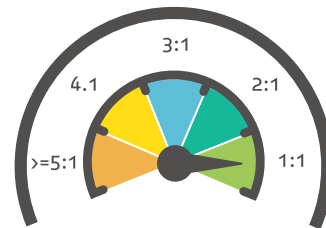


901

740

0

Students to Device Ratio



INTERNET BANDWIDTH



Bandwidth measures how much information can be transferred across an internet connection at one time. Schools that offer higher bandwidth ensure that the maximum number of students can benefit from online resources and tools via the Internet. Louisiana's statewide assessments only require 50 kilobits per second (kbps) of internet bandwidth per student; however accessing the Internet as part of daily classroom instruction is better supported by a 100 kbps or more bandwidth per student.

MAKING PROGRESS

READY

EXCEEDING



NETWORK READINESS



Network readiness determines whether a school's internal network and/or district's school-to-school wide area network is able to support student educational activities. District networks should be capable of supporting both current network connectivity of 1 Gbps and future instructional requirements, devices, and technology rich resources of 10 Gbps or more.

MAKING PROGRESS

READY

EXCEEDING





TECHNOLOGY FOOTPRINT SNAPSHOT

CONCORDIA PARISH

Total Schools: 10
Total Students: 3398
Total Test Takers: 2474

OVERALL READINESS: **MAKING PROGRESS**

DEVICES



Over the past 6 years, Louisiana's schools have substantially expanded student device access for daily classroom instruction and school assessments. Districts across the state are meeting these expectations through lowering student-to-device ratios to support daily instruction and learning. Districts offer a variety of personal computing devices, including laptops, tablets and traditional desktop computers, to meet their educational goals.

Student Devices by Type



798

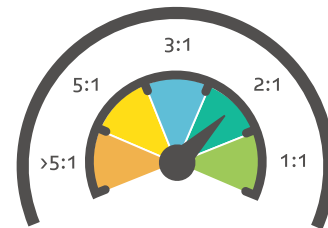


1132



0

Students to Device Ratio



INTERNET BANDWIDTH



Bandwidth measures how much information can be transferred across an internet connection at one time. Schools that offer higher bandwidth ensure that the maximum number of students can benefit from online resources and tools via the Internet. Louisiana's statewide assessments only require 50 kilobits per second (kbps) of internet bandwidth per student; however accessing the Internet as part of daily classroom instruction is better supported by a 100 kbps or more bandwidth per student.

MAKING PROGRESS

READY

EXCEEDING



NETWORK READINESS



Network readiness determines whether a school's internal network and/or district's school-to-school wide area network is able to support student educational activities. District networks should be capable of supporting both current network connectivity of 1 Gbps and future instructional requirements, devices, and technology rich resources of 10 Gbps or more.

MAKING PROGRESS

READY

EXCEEDING





TECHNOLOGY FOOTPRINT SNAPSHOT

DESOTO PARISH

Total Schools: 9
Total Students: 5221
Total Test Takers: 3820

OVERALL READINESS: **READY**

DEVICES



Over the past 6 years, Louisiana's schools have substantially expanded student device access for daily classroom instruction and school assessments. Districts across the state are meeting these expectations through lowering student-to-device ratios to support daily instruction and learning. Districts offer a variety of personal computing devices, including laptops, tablets and traditional desktop computers, to meet their educational goals.

Student Devices by Type

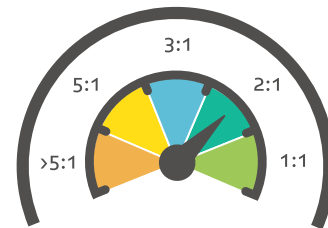


1529

0

1470

Students to Device Ratio



INTERNET BANDWIDTH



Bandwidth measures how much information can be transferred across an internet connection at one time. Schools that offer higher bandwidth ensure that the maximum number of students can benefit from online resources and tools via the Internet. Louisiana's statewide assessments only require 50 kilobits per second (kbps) of internet bandwidth per student; however accessing the Internet as part of daily classroom instruction is better supported by a 100 kbps or more bandwidth per student.

MAKING PROGRESS

READY

EXCEEDING



NETWORK READINESS



Network readiness determines whether a school's internal network and/or district's school-to-school wide area network is able to support student educational activities. District networks should be capable of supporting both current network connectivity of 1 Gbps and future instructional requirements, devices, and technology rich resources of 10 Gbps or more.

MAKING PROGRESS

READY

EXCEEDING





TECHNOLOGY FOOTPRINT SNAPSHOT

EAST BATON ROUGE PARISH

Total Schools: 85

Total Students: 40696

Total Test Takers: 28978

OVERALL READINESS: **READY**

DEVICES



Over the past 6 years, Louisiana's schools have substantially expanded student device access for daily classroom instruction and school assessments. Districts across the state are meeting these expectations through lowering student-to-device ratios to support daily instruction and learning. Districts offer a variety of personal computing devices, including laptops, tablets and traditional desktop computers, to meet their educational goals.

Student Devices by Type

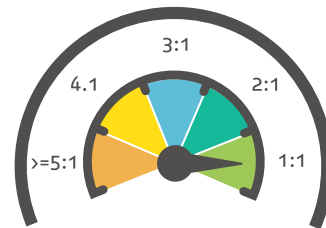


13564

27153

0

Students to Device Ratio



INTERNET BANDWIDTH



Bandwidth measures how much information can be transferred across an internet connection at one time. Schools that offer higher bandwidth ensure that the maximum number of students can benefit from online resources and tools via the Internet. Louisiana's statewide assessments only require 50 kilobits per second (kbps) of internet bandwidth per student; however accessing the Internet as part of daily classroom instruction is better supported by a 100 kbps or more bandwidth per student.

MAKING PROGRESS

READY

EXCEEDING



NETWORK READINESS



Network readiness determines whether a school's internal network and/or district's school-to-school wide area network is able to support student educational activities. District networks should be capable of supporting both current network connectivity of 1 Gbps and future instructional requirements, devices, and technology rich resources of 10 Gbps or more.

MAKING PROGRESS

READY

EXCEEDING





TECHNOLOGY FOOTPRINT SNAPSHOT

E. CARROLL PARISH SCHOOLS

Total Schools: 4
Total Students: 1020
Total Test Takers: 727

OVERALL READINESS: **READY**

DEVICES



Over the past 6 years, Louisiana’s schools have substantially expanded student device access for daily classroom instruction and school assessments. Districts across the state are meeting these expectations through lowering student-to-device ratios to support daily instruction and learning. Districts offer a variety of personal computing devices, including laptops, tablets and traditional desktop computers, to meet their educational goals.

Student Devices by Type

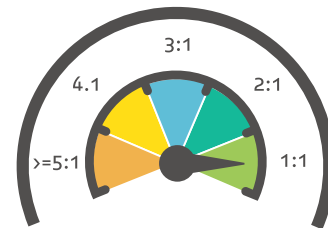


244

729

0

Students to Device Ratio



INTERNET BANDWIDTH



Bandwidth measures how much information can be transferred across an internet connection at one time. Schools that offer higher bandwidth ensure that the maximum number of students can benefit from online resources and tools via the Internet. Louisiana’s statewide assessments only require 50 kilobits per second (kbps) of internet bandwidth per student; however accessing the Internet as part of daily classroom instruction is better supported by a 100 kbps or more bandwidth per student.

MAKING PROGRESS

READY

EXCEEDING



NETWORK READINESS



Network readiness determines whether a school’s internal network and/or district’s school-to-school wide area network is able to support student educational activities. District networks should be capable of supporting both current network connectivity of 1 Gbps and future instructional requirements, devices, and technology rich resources of 10 Gbps or more.

MAKING PROGRESS

READY

EXCEEDING





TECHNOLOGY FOOTPRINT SNAPSHOT

E. FELICIANA PARISH

Total Schools: 7
Total Students: 1922
Total Test Takers: 1411

OVERALL READINESS: **READY**

DEVICES



Over the past 6 years, Louisiana’s schools have substantially expanded student device access for daily classroom instruction and school assessments. Districts across the state are meeting these expectations through lowering student-to-device ratios to support daily instruction and learning. Districts offer a variety of personal computing devices, including laptops, tablets and traditional desktop computers, to meet their educational goals.

Student Devices by Type



450

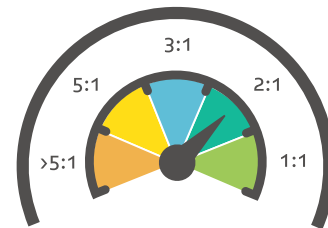


200



0

Students to Device Ratio



INTERNET BANDWIDTH



Bandwidth measures how much information can be transferred across an internet connection at one time. Schools that offer higher bandwidth ensure that the maximum number of students can benefit from online resources and tools via the Internet. Louisiana’s statewide assessments only require 50 kilobits per second (kbps) of internet bandwidth per student; however accessing the Internet as part of daily classroom instruction is better supported by a 100 kbps or more bandwidth per student.

MAKING
PROGRESS

READY

EXCEEDING



NETWORK READINESS



Network readiness determines whether a school’s internal network and/or district’s school-to-school wide area network is able to support student educational activities. District networks should be capable of supporting both current network connectivity of 1 Gbps and future instructional requirements, devices, and technology rich resources of 10 Gbps or more.

MAKING
PROGRESS

READY

EXCEEDING





TECHNOLOGY FOOTPRINT SNAPSHOT

EVANGELINE PARISH

Total Schools: 13
Total Students: 5968
Total Test Takers: 4284

OVERALL READINESS: **READY**

DEVICES



Over the past 6 years, Louisiana’s schools have substantially expanded student device access for daily classroom instruction and school assessments. Districts across the state are meeting these expectations through lowering student-to-device ratios to support daily instruction and learning. Districts offer a variety of personal computing devices, including laptops, tablets and traditional desktop computers, to meet their educational goals.

Student Devices by Type



986

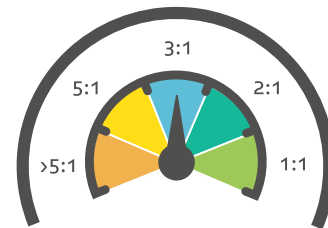


1299



0

Students to Device Ratio



INTERNET BANDWIDTH



Bandwidth measures how much information can be transferred across an internet connection at one time. Schools that offer higher bandwidth ensure that the maximum number of students can benefit from online resources and tools via the Internet. Louisiana’s statewide assessments only require 50 kilobits per second (kbps) of internet bandwidth per student; however accessing the Internet as part of daily classroom instruction is better supported by a 100 kbps or more bandwidth per student.

MAKING PROGRESS

READY

EXCEEDING



NETWORK READINESS



Network readiness determines whether a school’s internal network and/or district’s school-to-school wide area network is able to support student educational activities. District networks should be capable of supporting both current network connectivity of 1 Gbps and future instructional requirements, devices, and technology rich resources of 10 Gbps or more.

MAKING PROGRESS

READY

EXCEEDING





TECHNOLOGY FOOTPRINT SNAPSHOT

FRANKLIN PARISH SCHOOLS

Total Schools: 7
Total Students: 3241
Total Test Takers: 2211

OVERALL READINESS: **READY**

DEVICES



Over the past 6 years, Louisiana’s schools have substantially expanded student device access for daily classroom instruction and school assessments. Districts across the state are meeting these expectations through lowering student-to-device ratios to support daily instruction and learning. Districts offer a variety of personal computing devices, including laptops, tablets and traditional desktop computers, to meet their educational goals.

Student Devices by Type



464

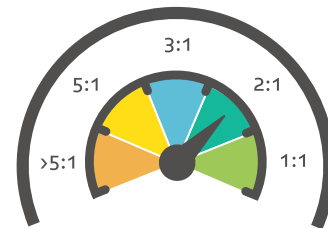


1098



0

Students to Device Ratio



INTERNET BANDWIDTH



Bandwidth measures how much information can be transferred across an internet connection at one time. Schools that offer higher bandwidth ensure that the maximum number of students can benefit from online resources and tools via the Internet. Louisiana’s statewide assessments only require 50 kilobits per second (kbps) of internet bandwidth per student; however accessing the Internet as part of daily classroom instruction is better supported by a 100 kbps or more bandwidth per student.

MAKING PROGRESS

READY

EXCEEDING



NETWORK READINESS



Network readiness determines whether a school’s internal network and/or district’s school-to-school wide area network is able to support student educational activities. District networks should be capable of supporting both current network connectivity of 1 Gbps and future instructional requirements, devices, and technology rich resources of 10 Gbps or more.

MAKING PROGRESS

READY

EXCEEDING





TECHNOLOGY FOOTPRINT SNAPSHOT

GRANT PARISH

Total Schools: 9
Total Students: 3032
Total Test Takers: 2286

OVERALL READINESS: **READY**

DEVICES



Over the past 6 years, Louisiana's schools have substantially expanded student device access for daily classroom instruction and school assessments. Districts across the state are meeting these expectations through lowering student-to-device ratios to support daily instruction and learning. Districts offer a variety of personal computing devices, including laptops, tablets and traditional desktop computers, to meet their educational goals.

Student Devices by Type



549

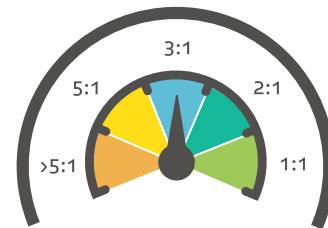


944



0

Students to Device Ratio



INTERNET BANDWIDTH



Bandwidth measures how much information can be transferred across an internet connection at one time. Schools that offer higher bandwidth ensure that the maximum number of students can benefit from online resources and tools via the Internet. Louisiana's statewide assessments only require 50 kilobits per second (kbps) of internet bandwidth per student; however accessing the Internet as part of daily classroom instruction is better supported by a 100 kbps or more bandwidth per student.

MAKING
PROGRESS

READY

EXCEEDING



NETWORK READINESS



Network readiness determines whether a school's internal network and/or district's school-to-school wide area network is able to support student educational activities. District networks should be capable of supporting both current network connectivity of 1 Gbps and future instructional requirements, devices, and technology rich resources of 10 Gbps or more.

MAKING
PROGRESS

READY

EXCEEDING





TECHNOLOGY FOOTPRINT SNAPSHOT

IBERIA PARISH

Total Schools: 26
Total Students: 13203
Total Test Takers: 9666

OVERALL READINESS: **MAKING PROGRESS**

DEVICES



Over the past 6 years, Louisiana’s schools have substantially expanded student device access for daily classroom instruction and school assessments. Districts across the state are meeting these expectations through lowering student-to-device ratios to support daily instruction and learning. Districts offer a variety of personal computing devices, including laptops, tablets and traditional desktop computers, to meet their educational goals.

Student Devices by Type



3090

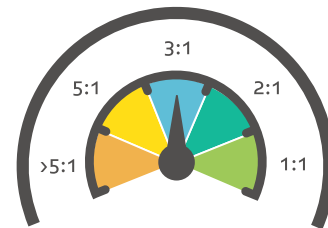


2785



0

Students to Device Ratio



INTERNET BANDWIDTH



Bandwidth measures how much information can be transferred across an internet connection at one time. Schools that offer higher bandwidth ensure that the maximum number of students can benefit from online resources and tools via the Internet. Louisiana’s statewide assessments only require 50 kilobits per second (kbps) of internet bandwidth per student; however accessing the Internet as part of daily classroom instruction is better supported by a 100 kbps or more bandwidth per student.



NETWORK READINESS



Network readiness determines whether a school’s internal network and/or district’s school-to-school wide area network is able to support student educational activities. District networks should be capable of supporting both current network connectivity of 1 Gbps and future instructional requirements, devices, and technology rich resources of 10 Gbps or more.





TECHNOLOGY FOOTPRINT SNAPSHOT

IBERVILLE PARISH SCHOOLS

Total Schools: 7
Total Students: 4976
Total Test Takers: 3452

OVERALL READINESS: **READY**

DEVICES



Over the past 6 years, Louisiana’s schools have substantially expanded student device access for daily classroom instruction and school assessments. Districts across the state are meeting these expectations through lowering student-to-device ratios to support daily instruction and learning. Districts offer a variety of personal computing devices, including laptops, tablets and traditional desktop computers, to meet their educational goals.

Student Devices by Type

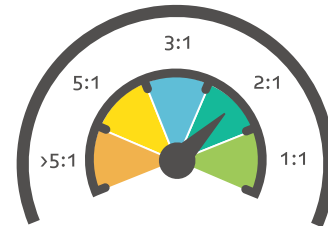


702

3209

0

Students to Device Ratio



INTERNET BANDWIDTH



Bandwidth measures how much information can be transferred across an internet connection at one time. Schools that offer higher bandwidth ensure that the maximum number of students can benefit from online resources and tools via the Internet. Louisiana’s statewide assessments only require 50 kilobits per second (kbps) of internet bandwidth per student; however accessing the Internet as part of daily classroom instruction is better supported by a 100 kbps or more bandwidth per student.

MAKING PROGRESS

READY

EXCEEDING



NETWORK READINESS



Network readiness determines whether a school’s internal network and/or district’s school-to-school wide area network is able to support student educational activities. District networks should be capable of supporting both current network connectivity of 1 Gbps and future instructional requirements, devices, and technology rich resources of 10 Gbps or more.

MAKING PROGRESS

READY

EXCEEDING





TECHNOLOGY FOOTPRINT SNAPSHOT

JACKSON PARISH SCHOOLS

Total Schools: 5
Total Students: 2261
Total Test Takers: 1665

OVERALL READINESS:  **READY**



DEVICES



Over the past 6 years, Louisiana’s schools have substantially expanded student device access for daily classroom instruction and school assessments. Districts across the state are meeting these expectations through lowering student-to-device ratios to support daily instruction and learning. Districts offer a variety of personal computing devices, including laptops, tablets and traditional desktop computers, to meet their educational goals.

Student Devices by Type

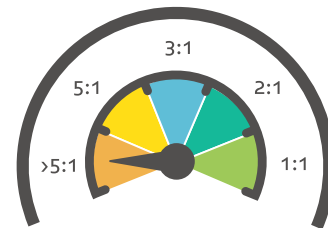


933

872

0

Students to Device Ratio



INTERNET BANDWIDTH



Bandwidth measures how much information can be transferred across an internet connection at one time. Schools that offer higher bandwidth ensure that the maximum number of students can benefit from online resources and tools via the Internet. Louisiana’s statewide assessments only require 50 kilobits per second (kbps) of internet bandwidth per student; however accessing the Internet as part of daily classroom instruction is better supported by a 100 kbps or more bandwidth per student.

MAKING PROGRESS

READY

EXCEEDING



NETWORK READINESS



Network readiness determines whether a school’s internal network and/or district’s school-to-school wide area network is able to support student educational activities. District networks should be capable of supporting both current network connectivity of 1 Gbps and future instructional requirements, devices, and technology rich resources of 10 Gbps or more.

MAKING PROGRESS

READY

EXCEEDING





TECHNOLOGY FOOTPRINT SNAPSHOT

JEFFERSON PARISH

Total Schools: 85
Total Students: 49328
Total Test Takers: 35379

OVERALL READINESS: **READY**

DEVICES



Over the past 6 years, Louisiana’s schools have substantially expanded student device access for daily classroom instruction and school assessments. Districts across the state are meeting these expectations through lowering student-to-device ratios to support daily instruction and learning. Districts offer a variety of personal computing devices, including laptops, tablets and traditional desktop computers, to meet their educational goals.

Student Devices by Type

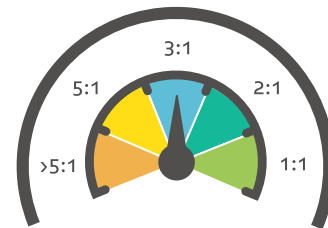


4602

13194

0

Students to Device Ratio



INTERNET BANDWIDTH



Bandwidth measures how much information can be transferred across an internet connection at one time. Schools that offer higher bandwidth ensure that the maximum number of students can benefit from online resources and tools via the Internet. Louisiana’s statewide assessments only require 50 kilobits per second (kbps) of internet bandwidth per student; however accessing the Internet as part of daily classroom instruction is better supported by a 100 kbps or more bandwidth per student.

MAKING PROGRESS

READY

EXCEEDING



NETWORK READINESS



Network readiness determines whether a school’s internal network and/or district’s school-to-school wide area network is able to support student educational activities. District networks should be capable of supporting both current network connectivity of 1 Gbps and future instructional requirements, devices, and technology rich resources of 10 Gbps or more.

MAKING PROGRESS

READY

EXCEEDING





TECHNOLOGY FOOTPRINT SNAPSHOT

JEFFERSON DAVIS PARISH

Total Schools: 14
Total Students: 5991
Total Test Takers: 4332

OVERALL READINESS:  **READY**



DEVICES



Over the past 6 years, Louisiana’s schools have substantially expanded student device access for daily classroom instruction and school assessments. Districts across the state are meeting these expectations through lowering student-to-device ratios to support daily instruction and learning. Districts offer a variety of personal computing devices, including laptops, tablets and traditional desktop computers, to meet their educational goals.

Student Devices by Type

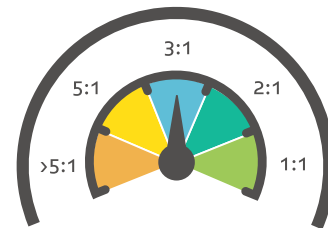


2195

135

0

Students to Device Ratio



INTERNET BANDWIDTH



Bandwidth measures how much information can be transferred across an internet connection at one time. Schools that offer higher bandwidth ensure that the maximum number of students can benefit from online resources and tools via the Internet. Louisiana’s statewide assessments only require 50 kilobits per second (kbps) of internet bandwidth per student; however accessing the Internet as part of daily classroom instruction is better supported by a 100 kbps or more bandwidth per student.

MAKING PROGRESS

READY

EXCEEDING



NETWORK READINESS



Network readiness determines whether a school’s internal network and/or district’s school-to-school wide area network is able to support student educational activities. District networks should be capable of supporting both current network connectivity of 1 Gbps and future instructional requirements, devices, and technology rich resources of 10 Gbps or more.

MAKING PROGRESS

READY

EXCEEDING





TECHNOLOGY FOOTPRINT SNAPSHOT

LAFAYETTE PARISH

Total Schools: 44
Total Students: 31020
Total Test Takers: 22758

OVERALL READINESS: **READY**

DEVICES



Over the past 6 years, Louisiana's schools have substantially expanded student device access for daily classroom instruction and school assessments. Districts across the state are meeting these expectations through lowering student-to-device ratios to support daily instruction and learning. Districts offer a variety of personal computing devices, including laptops, tablets and traditional desktop computers, to meet their educational goals.

Student Devices by Type

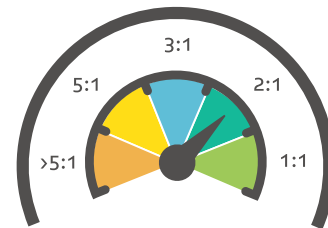


6896

19620

0

Students to Device Ratio



INTERNET BANDWIDTH



Bandwidth measures how much information can be transferred across an internet connection at one time. Schools that offer higher bandwidth ensure that the maximum number of students can benefit from online resources and tools via the Internet. Louisiana's statewide assessments only require 50 kilobits per second (kbps) of internet bandwidth per student; however accessing the Internet as part of daily classroom instruction is better supported by a 100 kbps or more bandwidth per student.

MAKING PROGRESS

READY

EXCEEDING



NETWORK READINESS



Network readiness determines whether a school's internal network and/or district's school-to-school wide area network is able to support student educational activities. District networks should be capable of supporting both current network connectivity of 1 Gbps and future instructional requirements, devices, and technology rich resources of 10 Gbps or more.

MAKING PROGRESS

READY

EXCEEDING





TECHNOLOGY FOOTPRINT SNAPSHOT

LAFOURCHE PARISH

Total Schools: 31
Total Students: 14662
Total Test Takers: 10663

OVERALL READINESS: **READY**

DEVICES



Over the past 6 years, Louisiana’s schools have substantially expanded student device access for daily classroom instruction and school assessments. Districts across the state are meeting these expectations through lowering student-to-device ratios to support daily instruction and learning. Districts offer a variety of personal computing devices, including laptops, tablets and traditional desktop computers, to meet their educational goals.

Student Devices by Type

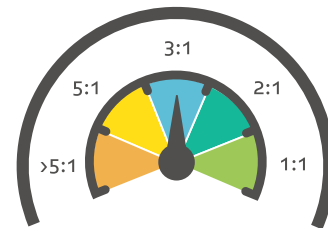


3125

2092

0

Students to Device Ratio



INTERNET BANDWIDTH



Bandwidth measures how much information can be transferred across an internet connection at one time. Schools that offer higher bandwidth ensure that the maximum number of students can benefit from online resources and tools via the Internet. Louisiana’s statewide assessments only require 50 kilobits per second (kbps) of internet bandwidth per student; however accessing the Internet as part of daily classroom instruction is better supported by a 100 kbps or more bandwidth per student.

MAKING PROGRESS

READY

EXCEEDING



NETWORK READINESS



Network readiness determines whether a school’s internal network and/or district’s school-to-school wide area network is able to support student educational activities. District networks should be capable of supporting both current network connectivity of 1 Gbps and future instructional requirements, devices, and technology rich resources of 10 Gbps or more.

MAKING PROGRESS

READY

EXCEEDING





TECHNOLOGY FOOTPRINT SNAPSHOT

LASALLE PARISH

Total Schools: 9
Total Students: 2654
Total Test Takers: 1920

OVERALL READINESS: **READY**

DEVICES



Over the past 6 years, Louisiana’s schools have substantially expanded student device access for daily classroom instruction and school assessments. Districts across the state are meeting these expectations through lowering student-to-device ratios to support daily instruction and learning. Districts offer a variety of personal computing devices, including laptops, tablets and traditional desktop computers, to meet their educational goals.

Student Devices by Type



772

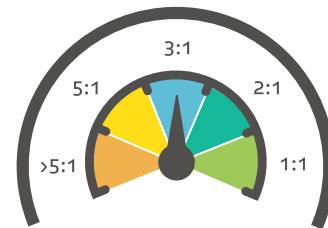


200



0

Students to Device Ratio



INTERNET BANDWIDTH



Bandwidth measures how much information can be transferred across an internet connection at one time. Schools that offer higher bandwidth ensure that the maximum number of students can benefit from online resources and tools via the Internet. Louisiana’s statewide assessments only require 50 kilobits per second (kbps) of internet bandwidth per student; however accessing the Internet as part of daily classroom instruction is better supported by a 100 kbps or more bandwidth per student.

MAKING PROGRESS

READY

EXCEEDING



NETWORK READINESS



Network readiness determines whether a school’s internal network and/or district’s school-to-school wide area network is able to support student educational activities. District networks should be capable of supporting both current network connectivity of 1 Gbps and future instructional requirements, devices, and technology rich resources of 10 Gbps or more.

MAKING PROGRESS

READY

EXCEEDING





TECHNOLOGY FOOTPRINT SNAPSHOT

LINCOLN PARISH

Total Schools: 15
Total Students: 6171
Total Test Takers: 4444

OVERALL READINESS: **READY**

DEVICES



Over the past 6 years, Louisiana’s schools have substantially expanded student device access for daily classroom instruction and school assessments. Districts across the state are meeting these expectations through lowering student-to-device ratios to support daily instruction and learning. Districts offer a variety of personal computing devices, including laptops, tablets and traditional desktop computers, to meet their educational goals.

Student Devices by Type



872

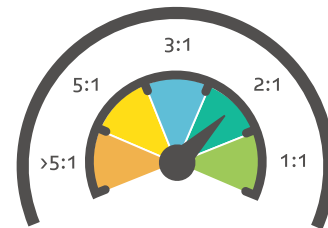


3507



130

Students to Device Ratio



INTERNET BANDWIDTH



Bandwidth measures how much information can be transferred across an internet connection at one time. Schools that offer higher bandwidth ensure that the maximum number of students can benefit from online resources and tools via the Internet. Louisiana’s statewide assessments only require 50 kilobits per second (kbps) of internet bandwidth per student; however accessing the Internet as part of daily classroom instruction is better supported by a 100 kbps or more bandwidth per student.

MAKING PROGRESS

READY

EXCEEDING



NETWORK READINESS



Network readiness determines whether a school’s internal network and/or district’s school-to-school wide area network is able to support student educational activities. District networks should be capable of supporting both current network connectivity of 1 Gbps and future instructional requirements, devices, and technology rich resources of 10 Gbps or more.

MAKING PROGRESS

READY

EXCEEDING





TECHNOLOGY FOOTPRINT SNAPSHOT

LIVINGSTON PARISH

Total Schools: 44
Total Students: 25482
Total Test Takers: 18983

OVERALL READINESS: **READY**

DEVICES



Over the past 6 years, Louisiana’s schools have substantially expanded student device access for daily classroom instruction and school assessments. Districts across the state are meeting these expectations through lowering student-to-device ratios to support daily instruction and learning. Districts offer a variety of personal computing devices, including laptops, tablets and traditional desktop computers, to meet their educational goals.

Student Devices by Type

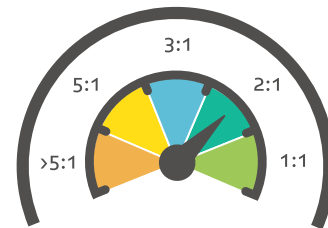


6332

8153

0

Students to Device Ratio



INTERNET BANDWIDTH



Bandwidth measures how much information can be transferred across an internet connection at one time. Schools that offer higher bandwidth ensure that the maximum number of students can benefit from online resources and tools via the Internet. Louisiana’s statewide assessments only require 50 kilobits per second (kbps) of internet bandwidth per student; however accessing the Internet as part of daily classroom instruction is better supported by a 100 kbps or more bandwidth per student.

MAKING PROGRESS

READY

EXCEEDING



NETWORK READINESS



Network readiness determines whether a school’s internal network and/or district’s school-to-school wide area network is able to support student educational activities. District networks should be capable of supporting both current network connectivity of 1 Gbps and future instructional requirements, devices, and technology rich resources of 10 Gbps or more.

MAKING PROGRESS

READY

EXCEEDING





TECHNOLOGY FOOTPRINT SNAPSHOT

MADISON PARISH SCHOOLS

Total Schools: 5
Total Students: 1304
Total Test Takers: 949

OVERALL READINESS: **READY**

DEVICES



Over the past 6 years, Louisiana’s schools have substantially expanded student device access for daily classroom instruction and school assessments. Districts across the state are meeting these expectations through lowering student-to-device ratios to support daily instruction and learning. Districts offer a variety of personal computing devices, including laptops, tablets and traditional desktop computers, to meet their educational goals.

Student Devices by Type



396

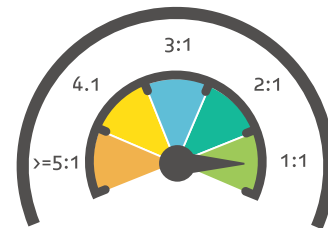


566



69

Students to Device Ratio



INTERNET BANDWIDTH



Bandwidth measures how much information can be transferred across an internet connection at one time. Schools that offer higher bandwidth ensure that the maximum number of students can benefit from online resources and tools via the Internet. Louisiana’s statewide assessments only require 50 kilobits per second (kbps) of internet bandwidth per student; however accessing the Internet as part of daily classroom instruction is better supported by a 100 kbps or more bandwidth per student.

MAKING PROGRESS

READY

EXCEEDING



NETWORK READINESS



Network readiness determines whether a school’s internal network and/or district’s school-to-school wide area network is able to support student educational activities. District networks should be capable of supporting both current network connectivity of 1 Gbps and future instructional requirements, devices, and technology rich resources of 10 Gbps or more.

MAKING PROGRESS

READY

EXCEEDING





TECHNOLOGY FOOTPRINT SNAPSHOT

MOREHOUSE PARISH

Total Schools: 8
Total Students: 3907
Total Test Takers: 2850

OVERALL READINESS: **READY**

DEVICES



Over the past 6 years, Louisiana's schools have substantially expanded student device access for daily classroom instruction and school assessments. Districts across the state are meeting these expectations through lowering student-to-device ratios to support daily instruction and learning. Districts offer a variety of personal computing devices, including laptops, tablets and traditional desktop computers, to meet their educational goals.

Student Devices by Type



415

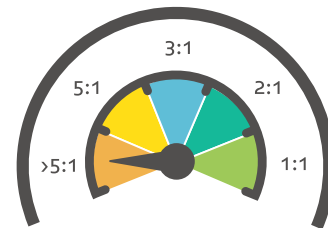


469



0

Students to Device Ratio



INTERNET BANDWIDTH



Bandwidth measures how much information can be transferred across an internet connection at one time. Schools that offer higher bandwidth ensure that the maximum number of students can benefit from online resources and tools via the Internet. Louisiana's statewide assessments only require 50 kilobits per second (kbps) of internet bandwidth per student; however accessing the Internet as part of daily classroom instruction is better supported by a 100 kbps or more bandwidth per student.

MAKING PROGRESS

READY

EXCEEDING



NETWORK READINESS



Network readiness determines whether a school's internal network and/or district's school-to-school wide area network is able to support student educational activities. District networks should be capable of supporting both current network connectivity of 1 Gbps and future instructional requirements, devices, and technology rich resources of 10 Gbps or more.

MAKING PROGRESS

READY

EXCEEDING





TECHNOLOGY FOOTPRINT SNAPSHOT

NATCHITOCHE PARISH

Total Schools: 16
Total Students: 6201
Total Test Takers: 4606

OVERALL READINESS: **READY**

DEVICES



Over the past 6 years, Louisiana's schools have substantially expanded student device access for daily classroom instruction and school assessments. Districts across the state are meeting these expectations through lowering student-to-device ratios to support daily instruction and learning. Districts offer a variety of personal computing devices, including laptops, tablets and traditional desktop computers, to meet their educational goals.

Student Devices by Type



1339

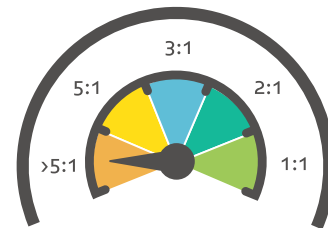


99



20

Students to Device Ratio



INTERNET BANDWIDTH



Bandwidth measures how much information can be transferred across an internet connection at one time. Schools that offer higher bandwidth ensure that the maximum number of students can benefit from online resources and tools via the Internet. Louisiana's statewide assessments only require 50 kilobits per second (kbps) of internet bandwidth per student; however accessing the Internet as part of daily classroom instruction is better supported by a 100 kbps or more bandwidth per student.

MAKING PROGRESS

READY

EXCEEDING



NETWORK READINESS



Network readiness determines whether a school's internal network and/or district's school-to-school wide area network is able to support student educational activities. District networks should be capable of supporting both current network connectivity of 1 Gbps and future instructional requirements, devices, and technology rich resources of 10 Gbps or more.

MAKING PROGRESS

READY

EXCEEDING





TECHNOLOGY FOOTPRINT SNAPSHOT

ORLEANS PARISH

Total Schools: 12

Total Students:

Total Test Takers:

OVERALL READINESS:  **MAKING PROGRESS**

DEVICES



Over the past 6 years, Louisiana's schools have substantially expanded student device access for daily classroom instruction and school assessments. Districts across the state are meeting these expectations through lowering student-to-device ratios to support daily instruction and learning. Districts offer a variety of personal computing devices, including laptops, tablets and traditional desktop computers, to meet their educational goals.

Student Devices by Type



622



7162



0

Students to Device Ratio

INTERNET BANDWIDTH



Bandwidth measures how much information can be transferred across an internet connection at one time. Schools that offer higher bandwidth ensure that the maximum number of students can benefit from online resources and tools via the Internet. Louisiana's statewide assessments only require 50 kilobits per second (kbps) of internet bandwidth per student; however accessing the Internet as part of daily classroom instruction is better supported by a 100 kbps or more bandwidth per student.

MAKING PROGRESS

READY

EXCEEDING



NETWORK READINESS



Network readiness determines whether a school's internal network and/or district's school-to-school wide area network is able to support student educational activities. District networks should be capable of supporting both current network connectivity of 1 Gbps and future instructional requirements, devices, and technology rich resources of 10 Gbps or more.

MAKING PROGRESS

READY

EXCEEDING





TECHNOLOGY FOOTPRINT SNAPSHOT

OUACHITA PARISH

Total Schools: 37
Total Students: 19526
Total Test Takers: 14287

OVERALL READINESS:  **READY**

DEVICES



Over the past 6 years, Louisiana's schools have substantially expanded student device access for daily classroom instruction and school assessments. Districts across the state are meeting these expectations through lowering student-to-device ratios to support daily instruction and learning. Districts offer a variety of personal computing devices, including laptops, tablets and traditional desktop computers, to meet their educational goals.

Student Devices by Type



2189

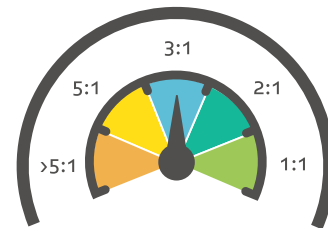


5419



0

Students to Device Ratio



INTERNET BANDWIDTH



Bandwidth measures how much information can be transferred across an internet connection at one time. Schools that offer higher bandwidth ensure that the maximum number of students can benefit from online resources and tools via the Internet. Louisiana's statewide assessments only require 50 kilobits per second (kbps) of internet bandwidth per student; however accessing the Internet as part of daily classroom instruction is better supported by a 100 kbps or more bandwidth per student.

MAKING PROGRESS

READY

EXCEEDING



NETWORK READINESS



Network readiness determines whether a school's internal network and/or district's school-to-school wide area network is able to support student educational activities. District networks should be capable of supporting both current network connectivity of 1 Gbps and future instructional requirements, devices, and technology rich resources of 10 Gbps or more.

MAKING PROGRESS

READY

EXCEEDING





TECHNOLOGY FOOTPRINT SNAPSHOT

PLAQUEMINES PARISH

Total Schools: 7
Total Students: 4085
Total Test Takers: 3014

OVERALL READINESS: **READY**

DEVICES



Over the past 6 years, Louisiana’s schools have substantially expanded student device access for daily classroom instruction and school assessments. Districts across the state are meeting these expectations through lowering student-to-device ratios to support daily instruction and learning. Districts offer a variety of personal computing devices, including laptops, tablets and traditional desktop computers, to meet their educational goals.

Student Devices by Type

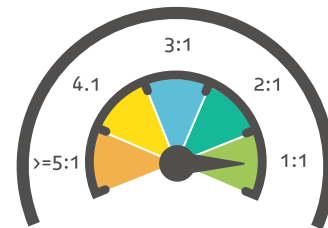


3038

600

0

Students to Device Ratio



INTERNET BANDWIDTH



Bandwidth measures how much information can be transferred across an internet connection at one time. Schools that offer higher bandwidth ensure that the maximum number of students can benefit from online resources and tools via the Internet. Louisiana’s statewide assessments only require 50 kilobits per second (kbps) of internet bandwidth per student; however accessing the Internet as part of daily classroom instruction is better supported by a 100 kbps or more bandwidth per student.

MAKING PROGRESS

READY

EXCEEDING



NETWORK READINESS



Network readiness determines whether a school’s internal network and/or district’s school-to-school wide area network is able to support student educational activities. District networks should be capable of supporting both current network connectivity of 1 Gbps and future instructional requirements, devices, and technology rich resources of 10 Gbps or more.

MAKING PROGRESS

READY

EXCEEDING





TECHNOLOGY FOOTPRINT SNAPSHOT

POINTE COUPEE PARISH SCHS

Total Schools: 6
Total Students: 2973
Total Test Takers: 1999

OVERALL READINESS: **READY**

DEVICES



Over the past 6 years, Louisiana's schools have substantially expanded student device access for daily classroom instruction and school assessments. Districts across the state are meeting these expectations through lowering student-to-device ratios to support daily instruction and learning. Districts offer a variety of personal computing devices, including laptops, tablets and traditional desktop computers, to meet their educational goals.

Student Devices by Type



547

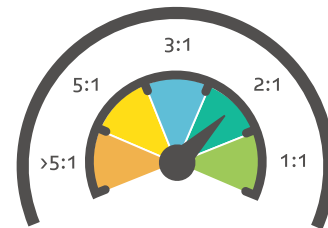


1690



0

Students to Device Ratio



INTERNET BANDWIDTH



Bandwidth measures how much information can be transferred across an internet connection at one time. Schools that offer higher bandwidth ensure that the maximum number of students can benefit from online resources and tools via the Internet. Louisiana's statewide assessments only require 50 kilobits per second (kbps) of internet bandwidth per student; however accessing the Internet as part of daily classroom instruction is better supported by a 100 kbps or more bandwidth per student.

MAKING PROGRESS

READY

EXCEEDING



NETWORK READINESS



Network readiness determines whether a school's internal network and/or district's school-to-school wide area network is able to support student educational activities. District networks should be capable of supporting both current network connectivity of 1 Gbps and future instructional requirements, devices, and technology rich resources of 10 Gbps or more.

MAKING PROGRESS

READY

EXCEEDING





TECHNOLOGY FOOTPRINT SNAPSHOT

RAPIDES PARISH

Total Schools: 48
Total Students: 23478
Total Test Takers: 17177

OVERALL READINESS: **MAKING PROGRESS**

DEVICES



Over the past 6 years, Louisiana's schools have substantially expanded student device access for daily classroom instruction and school assessments. Districts across the state are meeting these expectations through lowering student-to-device ratios to support daily instruction and learning. Districts offer a variety of personal computing devices, including laptops, tablets and traditional desktop computers, to meet their educational goals.

Student Devices by Type



1962

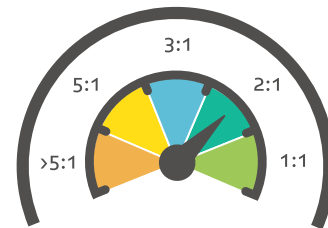


10976



1852

Students to Device Ratio



INTERNET BANDWIDTH



Bandwidth measures how much information can be transferred across an internet connection at one time. Schools that offer higher bandwidth ensure that the maximum number of students can benefit from online resources and tools via the Internet. Louisiana's statewide assessments only require 50 kilobits per second (kbps) of internet bandwidth per student; however accessing the Internet as part of daily classroom instruction is better supported by a 100 kbps or more bandwidth per student.



NETWORK READINESS



Network readiness determines whether a school's internal network and/or district's school-to-school wide area network is able to support student educational activities. District networks should be capable of supporting both current network connectivity of 1 Gbps and future instructional requirements, devices, and technology rich resources of 10 Gbps or more.





TECHNOLOGY FOOTPRINT SNAPSHOT

RED RIVER PARISH

Total Schools: 4
Total Students: 1490
Total Test Takers: 1079

OVERALL READINESS: **READY**

DEVICES



Over the past 6 years, Louisiana's schools have substantially expanded student device access for daily classroom instruction and school assessments. Districts across the state are meeting these expectations through lowering student-to-device ratios to support daily instruction and learning. Districts offer a variety of personal computing devices, including laptops, tablets and traditional desktop computers, to meet their educational goals.

Student Devices by Type



447



688



0

Students to Device Ratio



INTERNET BANDWIDTH



Bandwidth measures how much information can be transferred across an internet connection at one time. Schools that offer higher bandwidth ensure that the maximum number of students can benefit from online resources and tools via the Internet. Louisiana's statewide assessments only require 50 kilobits per second (kbps) of internet bandwidth per student; however accessing the Internet as part of daily classroom instruction is better supported by a 100 kbps or more bandwidth per student.

MAKING PROGRESS

READY

EXCEEDING



NETWORK READINESS



Network readiness determines whether a school's internal network and/or district's school-to-school wide area network is able to support student educational activities. District networks should be capable of supporting both current network connectivity of 1 Gbps and future instructional requirements, devices, and technology rich resources of 10 Gbps or more.

MAKING PROGRESS

READY

EXCEEDING





TECHNOLOGY FOOTPRINT SNAPSHOT

RICHLAND PARISH

Total Schools: 12
Total Students: 2903
Total Test Takers: 2189

OVERALL READINESS: **READY**

DEVICES



Over the past 6 years, Louisiana's schools have substantially expanded student device access for daily classroom instruction and school assessments. Districts across the state are meeting these expectations through lowering student-to-device ratios to support daily instruction and learning. Districts offer a variety of personal computing devices, including laptops, tablets and traditional desktop computers, to meet their educational goals.

Student Devices by Type



920

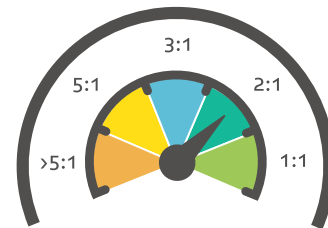


836



0

Students to Device Ratio



INTERNET BANDWIDTH



Bandwidth measures how much information can be transferred across an internet connection at one time. Schools that offer higher bandwidth ensure that the maximum number of students can benefit from online resources and tools via the Internet. Louisiana's statewide assessments only require 50 kilobits per second (kbps) of internet bandwidth per student; however accessing the Internet as part of daily classroom instruction is better supported by a 100 kbps or more bandwidth per student.

MAKING PROGRESS

READY

EXCEEDING



NETWORK READINESS



Network readiness determines whether a school's internal network and/or district's school-to-school wide area network is able to support student educational activities. District networks should be capable of supporting both current network connectivity of 1 Gbps and future instructional requirements, devices, and technology rich resources of 10 Gbps or more.

MAKING PROGRESS

READY

EXCEEDING





TECHNOLOGY FOOTPRINT SNAPSHOT

SABINE PARISH SCHOOLS

Total Schools: 10
Total Students: 4441
Total Test Takers: 3147

OVERALL READINESS: **READY**

DEVICES



Over the past 6 years, Louisiana's schools have substantially expanded student device access for daily classroom instruction and school assessments. Districts across the state are meeting these expectations through lowering student-to-device ratios to support daily instruction and learning. Districts offer a variety of personal computing devices, including laptops, tablets and traditional desktop computers, to meet their educational goals.

Student Devices by Type



1030

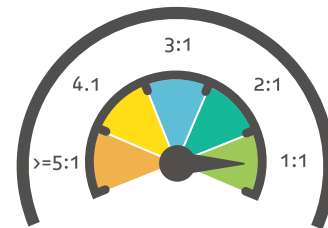


2424



1125

Students to Device Ratio



INTERNET BANDWIDTH



Bandwidth measures how much information can be transferred across an internet connection at one time. Schools that offer higher bandwidth ensure that the maximum number of students can benefit from online resources and tools via the Internet. Louisiana's statewide assessments only require 50 kilobits per second (kbps) of internet bandwidth per student; however accessing the Internet as part of daily classroom instruction is better supported by a 100 kbps or more bandwidth per student.

MAKING PROGRESS

READY

EXCEEDING



NETWORK READINESS



Network readiness determines whether a school's internal network and/or district's school-to-school wide area network is able to support student educational activities. District networks should be capable of supporting both current network connectivity of 1 Gbps and future instructional requirements, devices, and technology rich resources of 10 Gbps or more.

MAKING PROGRESS

READY

EXCEEDING





TECHNOLOGY FOOTPRINT SNAPSHOT

ST. BERNARD PARISH

Total Schools: 13
Total Students: 7753
Total Test Takers: 5503

OVERALL READINESS: **READY**

DEVICES



Over the past 6 years, Louisiana's schools have substantially expanded student device access for daily classroom instruction and school assessments. Districts across the state are meeting these expectations through lowering student-to-device ratios to support daily instruction and learning. Districts offer a variety of personal computing devices, including laptops, tablets and traditional desktop computers, to meet their educational goals.

Student Devices by Type

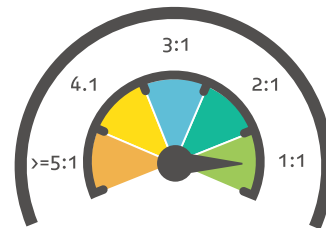


1358

6313

0

Students to Device Ratio



INTERNET BANDWIDTH



Bandwidth measures how much information can be transferred across an internet connection at one time. Schools that offer higher bandwidth ensure that the maximum number of students can benefit from online resources and tools via the Internet. Louisiana's statewide assessments only require 50 kilobits per second (kbps) of internet bandwidth per student; however accessing the Internet as part of daily classroom instruction is better supported by a 100 kbps or more bandwidth per student.

MAKING
PROGRESS

READY

EXCEEDING



NETWORK READINESS



Network readiness determines whether a school's internal network and/or district's school-to-school wide area network is able to support student educational activities. District networks should be capable of supporting both current network connectivity of 1 Gbps and future instructional requirements, devices, and technology rich resources of 10 Gbps or more.

MAKING
PROGRESS

READY

EXCEEDING





TECHNOLOGY FOOTPRINT SNAPSHOT

ST. CHARLES PARISH SCHOOLS

Total Schools: 17
Total Students: 9653
Total Test Takers: 7192

OVERALL READINESS: **READY**

DEVICES



Over the past 6 years, Louisiana's schools have substantially expanded student device access for daily classroom instruction and school assessments. Districts across the state are meeting these expectations through lowering student-to-device ratios to support daily instruction and learning. Districts offer a variety of personal computing devices, including laptops, tablets and traditional desktop computers, to meet their educational goals.

Student Devices by Type

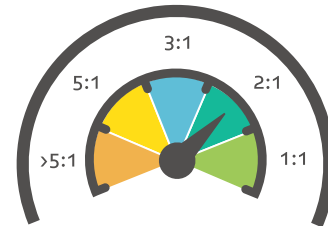


2199

4548

0

Students to Device Ratio



INTERNET BANDWIDTH



Bandwidth measures how much information can be transferred across an internet connection at one time. Schools that offer higher bandwidth ensure that the maximum number of students can benefit from online resources and tools via the Internet. Louisiana's statewide assessments only require 50 kilobits per second (kbps) of internet bandwidth per student; however accessing the Internet as part of daily classroom instruction is better supported by a 100 kbps or more bandwidth per student.

MAKING PROGRESS

READY

EXCEEDING



NETWORK READINESS



Network readiness determines whether a school's internal network and/or district's school-to-school wide area network is able to support student educational activities. District networks should be capable of supporting both current network connectivity of 1 Gbps and future instructional requirements, devices, and technology rich resources of 10 Gbps or more.

MAKING PROGRESS

READY

EXCEEDING





TECHNOLOGY FOOTPRINT SNAPSHOT

ST. HELENA PARISH SCHOOLS

Total Schools: 4

Total Students: 1190

Total Test Takers: 856

OVERALL READINESS:



DEVICES



Over the past 6 years, Louisiana's schools have substantially expanded student device access for daily classroom instruction and school assessments. Districts across the state are meeting these expectations through lowering student-to-device ratios to support daily instruction and learning. Districts offer a variety of personal computing devices, including laptops, tablets and traditional desktop computers, to meet their educational goals.

Student Devices by Type



255

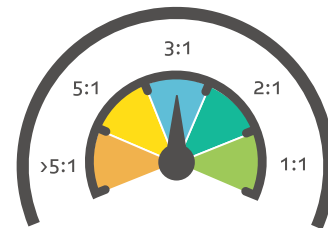


214



0

Students to Device Ratio



INTERNET BANDWIDTH



Bandwidth measures how much information can be transferred across an internet connection at one time. Schools that offer higher bandwidth ensure that the maximum number of students can benefit from online resources and tools via the Internet. Louisiana's statewide assessments only require 50 kilobits per second (kbps) of internet bandwidth per student; however accessing the Internet as part of daily classroom instruction is better supported by a 100 kbps or more bandwidth per student.

MAKING PROGRESS

READY

EXCEEDING



NETWORK READINESS



Network readiness determines whether a school's internal network and/or district's school-to-school wide area network is able to support student educational activities. District networks should be capable of supporting both current network connectivity of 1 Gbps and future instructional requirements, devices, and technology rich resources of 10 Gbps or more.

MAKING PROGRESS

READY

EXCEEDING





TECHNOLOGY FOOTPRINT SNAPSHOT

ST. JAMES PARISH

Total Schools: 9

Total Students: 3891

Total Test Takers: 2725

OVERALL READINESS:



DEVICES



Over the past 6 years, Louisiana’s schools have substantially expanded student device access for daily classroom instruction and school assessments. Districts across the state are meeting these expectations through lowering student-to-device ratios to support daily instruction and learning. Districts offer a variety of personal computing devices, including laptops, tablets and traditional desktop computers, to meet their educational goals.

Student Devices by Type



280

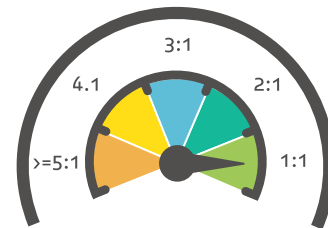


2967



420

Students to Device Ratio



INTERNET BANDWIDTH



Bandwidth measures how much information can be transferred across an internet connection at one time. Schools that offer higher bandwidth ensure that the maximum number of students can benefit from online resources and tools via the Internet. Louisiana’s statewide assessments only require 50 kilobits per second (kbps) of internet bandwidth per student; however accessing the Internet as part of daily classroom instruction is better supported by a 100 kbps or more bandwidth per student.

MAKING PROGRESS

READY

EXCEEDING



NETWORK READINESS



Network readiness determines whether a school’s internal network and/or district’s school-to-school wide area network is able to support student educational activities. District networks should be capable of supporting both current network connectivity of 1 Gbps and future instructional requirements, devices, and technology rich resources of 10 Gbps or more.

MAKING PROGRESS

READY

EXCEEDING





TECHNOLOGY FOOTPRINT SNAPSHOT

ST. JOHN PARISH SCHOOLS

Total Schools: 12
Total Students: 6086
Total Test Takers: 4450

OVERALL READINESS: **READY**

DEVICES



Over the past 6 years, Louisiana's schools have substantially expanded student device access for daily classroom instruction and school assessments. Districts across the state are meeting these expectations through lowering student-to-device ratios to support daily instruction and learning. Districts offer a variety of personal computing devices, including laptops, tablets and traditional desktop computers, to meet their educational goals.

Student Devices by Type

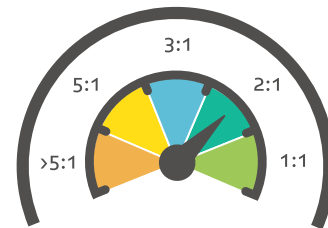


974

1888

0

Students to Device Ratio



INTERNET BANDWIDTH



Bandwidth measures how much information can be transferred across an internet connection at one time. Schools that offer higher bandwidth ensure that the maximum number of students can benefit from online resources and tools via the Internet. Louisiana's statewide assessments only require 50 kilobits per second (kbps) of internet bandwidth per student; however accessing the Internet as part of daily classroom instruction is better supported by a 100 kbps or more bandwidth per student.

MAKING PROGRESS

READY

EXCEEDING



NETWORK READINESS



Network readiness determines whether a school's internal network and/or district's school-to-school wide area network is able to support student educational activities. District networks should be capable of supporting both current network connectivity of 1 Gbps and future instructional requirements, devices, and technology rich resources of 10 Gbps or more.

MAKING PROGRESS

READY

EXCEEDING





TECHNOLOGY FOOTPRINT SNAPSHOT

ST. LANDRY PARISH SCHOOLS

Total Schools: 34
Total Students: 13729
Total Test Takers: 9805

OVERALL READINESS: **MAKING PROGRESS**

DEVICES



Over the past 6 years, Louisiana's schools have substantially expanded student device access for daily classroom instruction and school assessments. Districts across the state are meeting these expectations through lowering student-to-device ratios to support daily instruction and learning. Districts offer a variety of personal computing devices, including laptops, tablets and traditional desktop computers, to meet their educational goals.

Student Devices by Type



2096

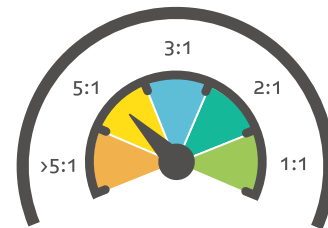


1861



0

Students to Device Ratio



INTERNET BANDWIDTH



Bandwidth measures how much information can be transferred across an internet connection at one time. Schools that offer higher bandwidth ensure that the maximum number of students can benefit from online resources and tools via the Internet. Louisiana's statewide assessments only require 50 kilobits per second (kbps) of internet bandwidth per student; however accessing the Internet as part of daily classroom instruction is better supported by a 100 kbps or more bandwidth per student.

MAKING PROGRESS

READY

EXCEEDING



NETWORK READINESS



Network readiness determines whether a school's internal network and/or district's school-to-school wide area network is able to support student educational activities. District networks should be capable of supporting both current network connectivity of 1 Gbps and future instructional requirements, devices, and technology rich resources of 10 Gbps or more.

MAKING PROGRESS

READY

EXCEEDING





TECHNOLOGY FOOTPRINT SNAPSHOT

ST. MARTIN PARISH

Total Schools: 17
Total Students: 8067
Total Test Takers: 5890

OVERALL READINESS: **MAKING PROGRESS**

DEVICES



Over the past 6 years, Louisiana’s schools have substantially expanded student device access for daily classroom instruction and school assessments. Districts across the state are meeting these expectations through lowering student-to-device ratios to support daily instruction and learning. Districts offer a variety of personal computing devices, including laptops, tablets and traditional desktop computers, to meet their educational goals.

Student Devices by Type



1920

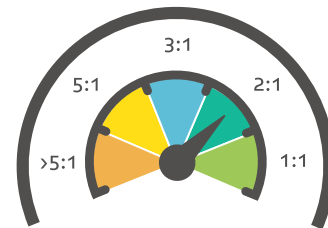


3486



0

Students to Device Ratio



INTERNET BANDWIDTH



Bandwidth measures how much information can be transferred across an internet connection at one time. Schools that offer higher bandwidth ensure that the maximum number of students can benefit from online resources and tools via the Internet. Louisiana’s statewide assessments only require 50 kilobits per second (kbps) of internet bandwidth per student; however accessing the Internet as part of daily classroom instruction is better supported by a 100 kbps or more bandwidth per student.



NETWORK READINESS



Network readiness determines whether a school’s internal network and/or district’s school-to-school wide area network is able to support student educational activities. District networks should be capable of supporting both current network connectivity of 1 Gbps and future instructional requirements, devices, and technology rich resources of 10 Gbps or more.





TECHNOLOGY FOOTPRINT SNAPSHOT

ST. MARY PARISH

Total Schools: 22

Total Students: 8660

Total Test Takers: 6337

OVERALL READINESS:  **READY**

DEVICES



Over the past 6 years, Louisiana's schools have substantially expanded student device access for daily classroom instruction and school assessments. Districts across the state are meeting these expectations through lowering student-to-device ratios to support daily instruction and learning. Districts offer a variety of personal computing devices, including laptops, tablets and traditional desktop computers, to meet their educational goals.

Student Devices by Type



2725

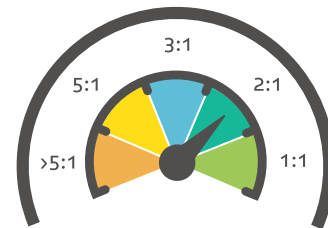


1948



0

Students to Device Ratio



INTERNET BANDWIDTH



Bandwidth measures how much information can be transferred across an internet connection at one time. Schools that offer higher bandwidth ensure that the maximum number of students can benefit from online resources and tools via the Internet. Louisiana's statewide assessments only require 50 kilobits per second (kbps) of internet bandwidth per student; however accessing the Internet as part of daily classroom instruction is better supported by a 100 kbps or more bandwidth per student.

MAKING PROGRESS

READY

EXCEEDING



NETWORK READINESS



Network readiness determines whether a school's internal network and/or district's school-to-school wide area network is able to support student educational activities. District networks should be capable of supporting both current network connectivity of 1 Gbps and future instructional requirements, devices, and technology rich resources of 10 Gbps or more.

MAKING PROGRESS

READY

EXCEEDING





TECHNOLOGY FOOTPRINT SNAPSHOT

ST. TAMMANY PARISH

Total Schools: 56
Total Students: 38549
Total Test Takers: 28964

OVERALL READINESS: **READY**

DEVICES



Over the past 6 years, Louisiana's schools have substantially expanded student device access for daily classroom instruction and school assessments. Districts across the state are meeting these expectations through lowering student-to-device ratios to support daily instruction and learning. Districts offer a variety of personal computing devices, including laptops, tablets and traditional desktop computers, to meet their educational goals.

Student Devices by Type

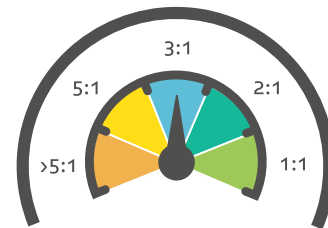


13226

2840

0

Students to Device Ratio



INTERNET BANDWIDTH



Bandwidth measures how much information can be transferred across an internet connection at one time. Schools that offer higher bandwidth ensure that the maximum number of students can benefit from online resources and tools via the Internet. Louisiana's statewide assessments only require 50 kilobits per second (kbps) of internet bandwidth per student; however accessing the Internet as part of daily classroom instruction is better supported by a 100 kbps or more bandwidth per student.

MAKING PROGRESS

READY

EXCEEDING



NETWORK READINESS



Network readiness determines whether a school's internal network and/or district's school-to-school wide area network is able to support student educational activities. District networks should be capable of supporting both current network connectivity of 1 Gbps and future instructional requirements, devices, and technology rich resources of 10 Gbps or more.

MAKING PROGRESS

READY

EXCEEDING





TECHNOLOGY FOOTPRINT SNAPSHOT

TANGIPAHOA PARISH

Total Schools: 35
Total Students: 19478
Total Test Takers: 14303

OVERALL READINESS: **READY**

DEVICES



Over the past 6 years, Louisiana’s schools have substantially expanded student device access for daily classroom instruction and school assessments. Districts across the state are meeting these expectations through lowering student-to-device ratios to support daily instruction and learning. Districts offer a variety of personal computing devices, including laptops, tablets and traditional desktop computers, to meet their educational goals.

Student Devices by Type



3095

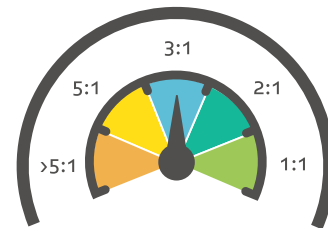


5186



0

Students to Device Ratio



INTERNET BANDWIDTH



Bandwidth measures how much information can be transferred across an internet connection at one time. Schools that offer higher bandwidth ensure that the maximum number of students can benefit from online resources and tools via the Internet. Louisiana’s statewide assessments only require 50 kilobits per second (kbps) of internet bandwidth per student; however accessing the Internet as part of daily classroom instruction is better supported by a 100 kbps or more bandwidth per student.

MAKING PROGRESS

READY

EXCEEDING



NETWORK READINESS



Network readiness determines whether a school’s internal network and/or district’s school-to-school wide area network is able to support student educational activities. District networks should be capable of supporting both current network connectivity of 1 Gbps and future instructional requirements, devices, and technology rich resources of 10 Gbps or more.

MAKING PROGRESS

READY

EXCEEDING





TECHNOLOGY FOOTPRINT SNAPSHOT

TENSAS PARISH SCHOOLS

Total Schools: 3
Total Students: 531
Total Test Takers: 402

OVERALL READINESS: **READY**

DEVICES



Over the past 6 years, Louisiana's schools have substantially expanded student device access for daily classroom instruction and school assessments. Districts across the state are meeting these expectations through lowering student-to-device ratios to support daily instruction and learning. Districts offer a variety of personal computing devices, including laptops, tablets and traditional desktop computers, to meet their educational goals.

Student Devices by Type

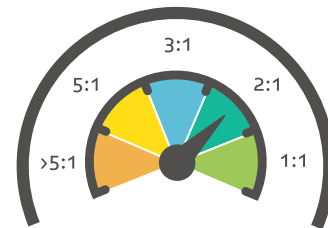


278

24

0

Students to Device Ratio



INTERNET BANDWIDTH



Bandwidth measures how much information can be transferred across an internet connection at one time. Schools that offer higher bandwidth ensure that the maximum number of students can benefit from online resources and tools via the Internet. Louisiana's statewide assessments only require 50 kilobits per second (kbps) of internet bandwidth per student; however accessing the Internet as part of daily classroom instruction is better supported by a 100 kbps or more bandwidth per student.

MAKING PROGRESS

READY

EXCEEDING



NETWORK READINESS



Network readiness determines whether a school's internal network and/or district's school-to-school wide area network is able to support student educational activities. District networks should be capable of supporting both current network connectivity of 1 Gbps and future instructional requirements, devices, and technology rich resources of 10 Gbps or more.

MAKING PROGRESS

READY

EXCEEDING





TECHNOLOGY FOOTPRINT SNAPSHOT

TERREBONNE PARISH

Total Schools: 34
Total Students: 17906
Total Test Takers: 12861

OVERALL READINESS:  **MAKING PROGRESS**

DEVICES



Over the past 6 years, Louisiana's schools have substantially expanded student device access for daily classroom instruction and school assessments. Districts across the state are meeting these expectations through lowering student-to-device ratios to support daily instruction and learning. Districts offer a variety of personal computing devices, including laptops, tablets and traditional desktop computers, to meet their educational goals.

Student Devices by Type



6070

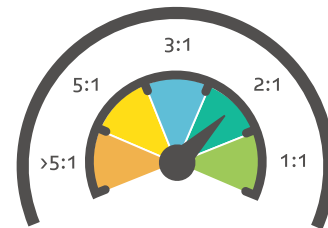


5060



20

Students to Device Ratio



INTERNET BANDWIDTH



Bandwidth measures how much information can be transferred across an internet connection at one time. Schools that offer higher bandwidth ensure that the maximum number of students can benefit from online resources and tools via the Internet. Louisiana's statewide assessments only require 50 kilobits per second (kbps) of internet bandwidth per student; however accessing the Internet as part of daily classroom instruction is better supported by a 100 kbps or more bandwidth per student.

MAKING PROGRESS

READY

EXCEEDING



NETWORK READINESS



Network readiness determines whether a school's internal network and/or district's school-to-school wide area network is able to support student educational activities. District networks should be capable of supporting both current network connectivity of 1 Gbps and future instructional requirements, devices, and technology rich resources of 10 Gbps or more.

MAKING PROGRESS

READY

EXCEEDING





TECHNOLOGY FOOTPRINT SNAPSHOT

UNION PARISH SCHOOL DISTRICT

Total Schools: 4
Total Students: 2071
Total Test Takers: 1500

OVERALL READINESS: **READY**

DEVICES



Over the past 6 years, Louisiana's schools have substantially expanded student device access for daily classroom instruction and school assessments. Districts across the state are meeting these expectations through lowering student-to-device ratios to support daily instruction and learning. Districts offer a variety of personal computing devices, including laptops, tablets and traditional desktop computers, to meet their educational goals.

Student Devices by Type



516

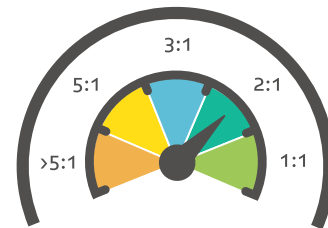


423



0

Students to Device Ratio



INTERNET BANDWIDTH



Bandwidth measures how much information can be transferred across an internet connection at one time. Schools that offer higher bandwidth ensure that the maximum number of students can benefit from online resources and tools via the Internet. Louisiana's statewide assessments only require 50 kilobits per second (kbps) of internet bandwidth per student; however accessing the Internet as part of daily classroom instruction is better supported by a 100 kbps or more bandwidth per student.

MAKING PROGRESS

READY

EXCEEDING



NETWORK READINESS



Network readiness determines whether a school's internal network and/or district's school-to-school wide area network is able to support student educational activities. District networks should be capable of supporting both current network connectivity of 1 Gbps and future instructional requirements, devices, and technology rich resources of 10 Gbps or more.

MAKING PROGRESS

READY

EXCEEDING





TECHNOLOGY FOOTPRINT SNAPSHOT

VERMILION PARISH

Total Schools: 21

Total Students: 9772

Total Test Takers: 7027

OVERALL READINESS:  **READY**

DEVICES



Over the past 6 years, Louisiana's schools have substantially expanded student device access for daily classroom instruction and school assessments. Districts across the state are meeting these expectations through lowering student-to-device ratios to support daily instruction and learning. Districts offer a variety of personal computing devices, including laptops, tablets and traditional desktop computers, to meet their educational goals.

Student Devices by Type



1483

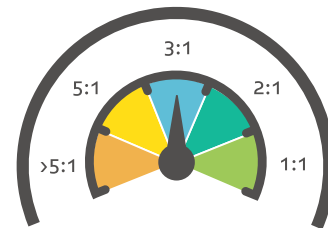


1435



180

Students to Device Ratio



INTERNET BANDWIDTH



Bandwidth measures how much information can be transferred across an internet connection at one time. Schools that offer higher bandwidth ensure that the maximum number of students can benefit from online resources and tools via the Internet. Louisiana's statewide assessments only require 50 kilobits per second (kbps) of internet bandwidth per student; however accessing the Internet as part of daily classroom instruction is better supported by a 100 kbps or more bandwidth per student.

MAKING
PROGRESS

READY

EXCEEDING



NETWORK READINESS



Network readiness determines whether a school's internal network and/or district's school-to-school wide area network is able to support student educational activities. District networks should be capable of supporting both current network connectivity of 1 Gbps and future instructional requirements, devices, and technology rich resources of 10 Gbps or more.

MAKING
PROGRESS

READY

EXCEEDING





TECHNOLOGY FOOTPRINT SNAPSHOT

VERNON PARISH

Total Schools: 19
Total Students: 8883
Total Test Takers: 5980

OVERALL READINESS: **READY**

DEVICES



Over the past 6 years, Louisiana's schools have substantially expanded student device access for daily classroom instruction and school assessments. Districts across the state are meeting these expectations through lowering student-to-device ratios to support daily instruction and learning. Districts offer a variety of personal computing devices, including laptops, tablets and traditional desktop computers, to meet their educational goals.

Student Devices by Type



3695

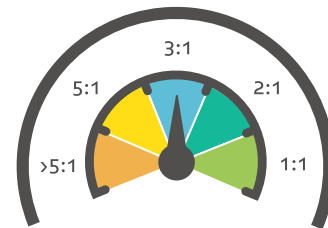


0



0

Students to Device Ratio



INTERNET BANDWIDTH



Bandwidth measures how much information can be transferred across an internet connection at one time. Schools that offer higher bandwidth ensure that the maximum number of students can benefit from online resources and tools via the Internet. Louisiana's statewide assessments only require 50 kilobits per second (kbps) of internet bandwidth per student; however accessing the Internet as part of daily classroom instruction is better supported by a 100 kbps or more bandwidth per student.

MAKING
PROGRESS

READY

EXCEEDING



NETWORK READINESS



Network readiness determines whether a school's internal network and/or district's school-to-school wide area network is able to support student educational activities. District networks should be capable of supporting both current network connectivity of 1 Gbps and future instructional requirements, devices, and technology rich resources of 10 Gbps or more.

MAKING
PROGRESS

READY

EXCEEDING





TECHNOLOGY FOOTPRINT SNAPSHOT

WASHINGTON PARISH

Total Schools: 11
Total Students: 5311
Total Test Takers: 3977

OVERALL READINESS: **READY**

DEVICES



Over the past 6 years, Louisiana’s schools have substantially expanded student device access for daily classroom instruction and school assessments. Districts across the state are meeting these expectations through lowering student-to-device ratios to support daily instruction and learning. Districts offer a variety of personal computing devices, including laptops, tablets and traditional desktop computers, to meet their educational goals.

Student Devices by Type



1188

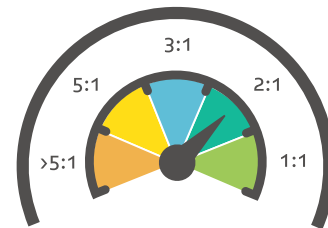


1291



0

Students to Device Ratio



INTERNET BANDWIDTH



Bandwidth measures how much information can be transferred across an internet connection at one time. Schools that offer higher bandwidth ensure that the maximum number of students can benefit from online resources and tools via the Internet. Louisiana’s statewide assessments only require 50 kilobits per second (kbps) of internet bandwidth per student; however accessing the Internet as part of daily classroom instruction is better supported by a 100 kbps or more bandwidth per student.

MAKING
PROGRESS

READY

EXCEEDING



NETWORK READINESS



Network readiness determines whether a school’s internal network and/or district’s school-to-school wide area network is able to support student educational activities. District networks should be capable of supporting both current network connectivity of 1 Gbps and future instructional requirements, devices, and technology rich resources of 10 Gbps or more.

MAKING
PROGRESS

READY

EXCEEDING





TECHNOLOGY FOOTPRINT SNAPSHOT

WEBSTER PARISH

Total Schools: 15
Total Students: 6274
Total Test Takers: 4647

OVERALL READINESS: **READY**

DEVICES



Over the past 6 years, Louisiana’s schools have substantially expanded student device access for daily classroom instruction and school assessments. Districts across the state are meeting these expectations through lowering student-to-device ratios to support daily instruction and learning. Districts offer a variety of personal computing devices, including laptops, tablets and traditional desktop computers, to meet their educational goals.

Student Devices by Type



987

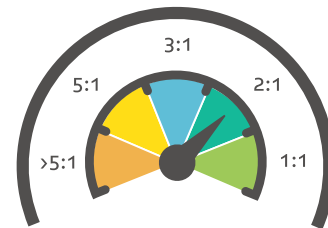


1758



25

Students to Device Ratio



INTERNET BANDWIDTH



Bandwidth measures how much information can be transferred across an internet connection at one time. Schools that offer higher bandwidth ensure that the maximum number of students can benefit from online resources and tools via the Internet. Louisiana’s statewide assessments only require 50 kilobits per second (kbps) of internet bandwidth per student; however accessing the Internet as part of daily classroom instruction is better supported by a 100 kbps or more bandwidth per student.

MAKING PROGRESS

READY

EXCEEDING



NETWORK READINESS



Network readiness determines whether a school’s internal network and/or district’s school-to-school wide area network is able to support student educational activities. District networks should be capable of supporting both current network connectivity of 1 Gbps and future instructional requirements, devices, and technology rich resources of 10 Gbps or more.

MAKING PROGRESS

READY

EXCEEDING





TECHNOLOGY FOOTPRINT SNAPSHOT

WEST BATON ROUGE PARISH

Total Schools: 10
Total Students: 3924
Total Test Takers: 2648

OVERALL READINESS: **READY**

DEVICES



Over the past 6 years, Louisiana's schools have substantially expanded student device access for daily classroom instruction and school assessments. Districts across the state are meeting these expectations through lowering student-to-device ratios to support daily instruction and learning. Districts offer a variety of personal computing devices, including laptops, tablets and traditional desktop computers, to meet their educational goals.

Student Devices by Type



385

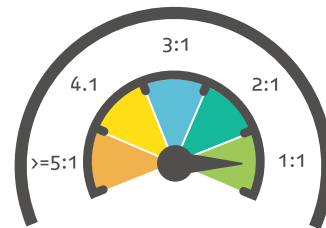


3111



0

Students to Device Ratio



INTERNET BANDWIDTH



Bandwidth measures how much information can be transferred across an internet connection at one time. Schools that offer higher bandwidth ensure that the maximum number of students can benefit from online resources and tools via the Internet. Louisiana's statewide assessments only require 50 kilobits per second (kbps) of internet bandwidth per student; however accessing the Internet as part of daily classroom instruction is better supported by a 100 kbps or more bandwidth per student.

MAKING
PROGRESS

READY

EXCEEDING



NETWORK READINESS



Network readiness determines whether a school's internal network and/or district's school-to-school wide area network is able to support student educational activities. District networks should be capable of supporting both current network connectivity of 1 Gbps and future instructional requirements, devices, and technology rich resources of 10 Gbps or more.

MAKING
PROGRESS

READY

EXCEEDING





TECHNOLOGY FOOTPRINT SNAPSHOT

WEST CARROLL PARISH

Total Schools: 5
Total Students: 2074
Total Test Takers: 1537

OVERALL READINESS: **READY**

DEVICES



Over the past 6 years, Louisiana's schools have substantially expanded student device access for daily classroom instruction and school assessments. Districts across the state are meeting these expectations through lowering student-to-device ratios to support daily instruction and learning. Districts offer a variety of personal computing devices, including laptops, tablets and traditional desktop computers, to meet their educational goals.

Student Devices by Type



534

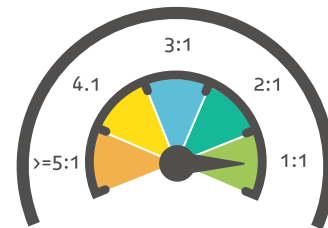


1990



0

Students to Device Ratio



INTERNET BANDWIDTH



Bandwidth measures how much information can be transferred across an internet connection at one time. Schools that offer higher bandwidth ensure that the maximum number of students can benefit from online resources and tools via the Internet. Louisiana's statewide assessments only require 50 kilobits per second (kbps) of internet bandwidth per student; however accessing the Internet as part of daily classroom instruction is better supported by a 100 kbps or more bandwidth per student.

MAKING
PROGRESS

READY

EXCEEDING



NETWORK READINESS



Network readiness determines whether a school's internal network and/or district's school-to-school wide area network is able to support student educational activities. District networks should be capable of supporting both current network connectivity of 1 Gbps and future instructional requirements, devices, and technology rich resources of 10 Gbps or more.

MAKING
PROGRESS

READY

EXCEEDING





TECHNOLOGY FOOTPRINT SNAPSHOT

WEST FELICIANA PARISH

Total Schools: 5
Total Students: 2224
Total Test Takers: 1596

OVERALL READINESS: **READY**

DEVICES



Over the past 6 years, Louisiana's schools have substantially expanded student device access for daily classroom instruction and school assessments. Districts across the state are meeting these expectations through lowering student-to-device ratios to support daily instruction and learning. Districts offer a variety of personal computing devices, including laptops, tablets and traditional desktop computers, to meet their educational goals.

Student Devices by Type



184

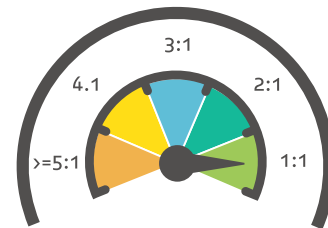


1483



0

Students to Device Ratio



INTERNET BANDWIDTH



Bandwidth measures how much information can be transferred across an internet connection at one time. Schools that offer higher bandwidth ensure that the maximum number of students can benefit from online resources and tools via the Internet. Louisiana's statewide assessments only require 50 kilobits per second (kbps) of internet bandwidth per student; however accessing the Internet as part of daily classroom instruction is better supported by a 100 kbps or more bandwidth per student.

MAKING
PROGRESS

READY

EXCEEDING



NETWORK READINESS



Network readiness determines whether a school's internal network and/or district's school-to-school wide area network is able to support student educational activities. District networks should be capable of supporting both current network connectivity of 1 Gbps and future instructional requirements, devices, and technology rich resources of 10 Gbps or more.

MAKING
PROGRESS

READY

EXCEEDING





TECHNOLOGY FOOTPRINT SNAPSHOT

WINN PARISH

Total Schools: 7
Total Students: 2270
Total Test Takers: 1675

OVERALL READINESS: **READY**

DEVICES



Over the past 6 years, Louisiana's schools have substantially expanded student device access for daily classroom instruction and school assessments. Districts across the state are meeting these expectations through lowering student-to-device ratios to support daily instruction and learning. Districts offer a variety of personal computing devices, including laptops, tablets and traditional desktop computers, to meet their educational goals.

Student Devices by Type

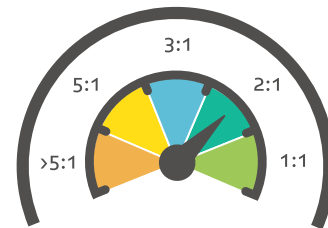


437

973

0

Students to Device Ratio



INTERNET BANDWIDTH



Bandwidth measures how much information can be transferred across an internet connection at one time. Schools that offer higher bandwidth ensure that the maximum number of students can benefit from online resources and tools via the Internet. Louisiana's statewide assessments only require 50 kilobits per second (kbps) of internet bandwidth per student; however accessing the Internet as part of daily classroom instruction is better supported by a 100 kbps or more bandwidth per student.

MAKING PROGRESS

READY

EXCEEDING



NETWORK READINESS



Network readiness determines whether a school's internal network and/or district's school-to-school wide area network is able to support student educational activities. District networks should be capable of supporting both current network connectivity of 1 Gbps and future instructional requirements, devices, and technology rich resources of 10 Gbps or more.

MAKING PROGRESS

READY

EXCEEDING





TECHNOLOGY FOOTPRINT SNAPSHOT

MONROE CITY SCHOOLS

Total Schools: 20
Total Students: 8419
Total Test Takers: 5700

OVERALL READINESS: **READY**

DEVICES



Over the past 6 years, Louisiana's schools have substantially expanded student device access for daily classroom instruction and school assessments. Districts across the state are meeting these expectations through lowering student-to-device ratios to support daily instruction and learning. Districts offer a variety of personal computing devices, including laptops, tablets and traditional desktop computers, to meet their educational goals.

Student Devices by Type

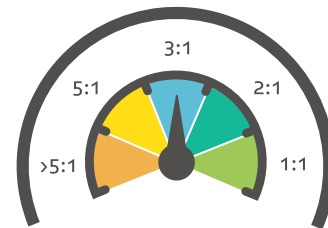


1220

1415

206

Students to Device Ratio



INTERNET BANDWIDTH



Bandwidth measures how much information can be transferred across an internet connection at one time. Schools that offer higher bandwidth ensure that the maximum number of students can benefit from online resources and tools via the Internet. Louisiana's statewide assessments only require 50 kilobits per second (kbps) of internet bandwidth per student; however accessing the Internet as part of daily classroom instruction is better supported by a 100 kbps or more bandwidth per student.

MAKING PROGRESS

READY

EXCEEDING



NETWORK READINESS



Network readiness determines whether a school's internal network and/or district's school-to-school wide area network is able to support student educational activities. District networks should be capable of supporting both current network connectivity of 1 Gbps and future instructional requirements, devices, and technology rich resources of 10 Gbps or more.

MAKING PROGRESS

READY

EXCEEDING





TECHNOLOGY FOOTPRINT SNAPSHOT

CITY OF BOGALUSA SCHOOLS

Total Schools: 4
Total Students: 2056
Total Test Takers: 1442

OVERALL READINESS: **READY**

DEVICES



Over the past 6 years, Louisiana’s schools have substantially expanded student device access for daily classroom instruction and school assessments. Districts across the state are meeting these expectations through lowering student-to-device ratios to support daily instruction and learning. Districts offer a variety of personal computing devices, including laptops, tablets and traditional desktop computers, to meet their educational goals.

Student Devices by Type



615

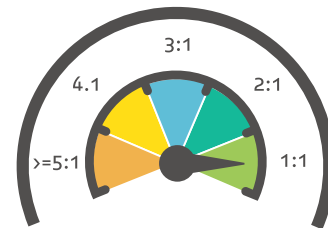


1276



16

Students to Device Ratio



INTERNET BANDWIDTH



Bandwidth measures how much information can be transferred across an internet connection at one time. Schools that offer higher bandwidth ensure that the maximum number of students can benefit from online resources and tools via the Internet. Louisiana’s statewide assessments only require 50 kilobits per second (kbps) of internet bandwidth per student; however accessing the Internet as part of daily classroom instruction is better supported by a 100 kbps or more bandwidth per student.

MAKING PROGRESS

READY

EXCEEDING



NETWORK READINESS



Network readiness determines whether a school’s internal network and/or district’s school-to-school wide area network is able to support student educational activities. District networks should be capable of supporting both current network connectivity of 1 Gbps and future instructional requirements, devices, and technology rich resources of 10 Gbps or more.

MAKING PROGRESS

READY

EXCEEDING





TECHNOLOGY FOOTPRINT SNAPSHOT

ZACHARY COMMUNITY SCHOOLS

Total Schools: 8
Total Students: 5568
Total Test Takers: 4098

OVERALL READINESS: **READY**

DEVICES



Over the past 6 years, Louisiana's schools have substantially expanded student device access for daily classroom instruction and school assessments. Districts across the state are meeting these expectations through lowering student-to-device ratios to support daily instruction and learning. Districts offer a variety of personal computing devices, including laptops, tablets and traditional desktop computers, to meet their educational goals.

Student Devices by Type

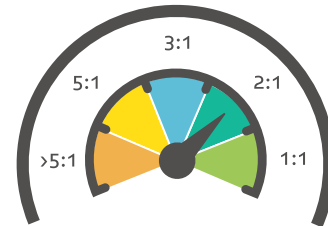


1696

3066

0

Students to Device Ratio



INTERNET BANDWIDTH



Bandwidth measures how much information can be transferred across an internet connection at one time. Schools that offer higher bandwidth ensure that the maximum number of students can benefit from online resources and tools via the Internet. Louisiana's statewide assessments only require 50 kilobits per second (kbps) of internet bandwidth per student; however accessing the Internet as part of daily classroom instruction is better supported by a 100 kbps or more bandwidth per student.

MAKING PROGRESS

READY

EXCEEDING



NETWORK READINESS



Network readiness determines whether a school's internal network and/or district's school-to-school wide area network is able to support student educational activities. District networks should be capable of supporting both current network connectivity of 1 Gbps and future instructional requirements, devices, and technology rich resources of 10 Gbps or more.

MAKING PROGRESS

READY

EXCEEDING





TECHNOLOGY FOOTPRINT SNAPSHOT

CITY OF BAKER SCHOOLS

Total Schools: 5
Total Students: 1416
Total Test Takers: 1126

OVERALL READINESS: **READY**

DEVICES



Over the past 6 years, Louisiana's schools have substantially expanded student device access for daily classroom instruction and school assessments. Districts across the state are meeting these expectations through lowering student-to-device ratios to support daily instruction and learning. Districts offer a variety of personal computing devices, including laptops, tablets and traditional desktop computers, to meet their educational goals.

Student Devices by Type



723

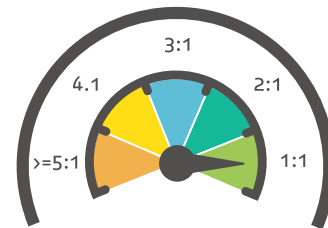


1971



0

Students to Device Ratio



INTERNET BANDWIDTH



Bandwidth measures how much information can be transferred across an internet connection at one time. Schools that offer higher bandwidth ensure that the maximum number of students can benefit from online resources and tools via the Internet. Louisiana's statewide assessments only require 50 kilobits per second (kbps) of internet bandwidth per student; however accessing the Internet as part of daily classroom instruction is better supported by a 100 kbps or more bandwidth per student.

MAKING PROGRESS

READY

EXCEEDING



NETWORK READINESS



Network readiness determines whether a school's internal network and/or district's school-to-school wide area network is able to support student educational activities. District networks should be capable of supporting both current network connectivity of 1 Gbps and future instructional requirements, devices, and technology rich resources of 10 Gbps or more.

MAKING PROGRESS

READY

EXCEEDING





TECHNOLOGY FOOTPRINT SNAPSHOT

CENTRAL COMMUNITY SCHOOLS

Total Schools: 6
Total Students: 4626
Total Test Takers: 3515

OVERALL READINESS: **READY**

DEVICES



Over the past 6 years, Louisiana’s schools have substantially expanded student device access for daily classroom instruction and school assessments. Districts across the state are meeting these expectations through lowering student-to-device ratios to support daily instruction and learning. Districts offer a variety of personal computing devices, including laptops, tablets and traditional desktop computers, to meet their educational goals.

Student Devices by Type

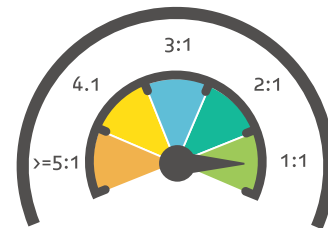


775

3600

0

Students to Device Ratio



INTERNET BANDWIDTH



Bandwidth measures how much information can be transferred across an internet connection at one time. Schools that offer higher bandwidth ensure that the maximum number of students can benefit from online resources and tools via the Internet. Louisiana’s statewide assessments only require 50 kilobits per second (kbps) of internet bandwidth per student; however accessing the Internet as part of daily classroom instruction is better supported by a 100 kbps or more bandwidth per student.

MAKING PROGRESS

READY

EXCEEDING



NETWORK READINESS



Network readiness determines whether a school’s internal network and/or district’s school-to-school wide area network is able to support student educational activities. District networks should be capable of supporting both current network connectivity of 1 Gbps and future instructional requirements, devices, and technology rich resources of 10 Gbps or more.

MAKING PROGRESS

READY

EXCEEDING

