



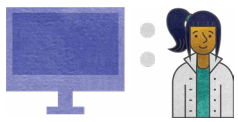
TECHNOLOGY FOOTPRINT

JANUARY 2020

EAST BATON ROUGE PARISH SNAPSHOT

[82 SCHOOLS • 41,637 STUDENTS • 46,507 DEVICES]

Since 2011, the state has been reporting school system progress relative to broadband and technology availability to students. This snapshot depicts current status in comparison to the state. [View the full report](#) providing an overview of Louisiana’s technology readiness and educational technology progress.



DEVICES

DISTRICT

STATE

AVERAGE STUDENT TO DEVICE RATIO	1:1	1:1
---------------------------------	-----	-----

PERCENT OF DEVICES BY TYPE:

TABLET	0%	3%
LAPTOP	4%	20%
CHROMEBOOK	71%	52%
DESKTOP	24%	24%
VDI	0%	1%



BANDWIDTH*

DISTRICT

STATE

AVERAGE BANDWIDTH PER STUDENT	240	1.13 MBPS
-------------------------------	-----	-----------



STAFFING

DISTRICT

STATE

EDUCATIONAL TECHNOLOGY STAFF	75	AVERAGE 3.4 PER DISTRICT
INFORMATION TECHNOLOGY STAFF	0	AVERAGE 6.1 PER DISTRICT

* Many Louisiana school systems utilize caching, peer-to-peer (P2P), and other network optimization technologies which ensure more efficient use of bandwidth resources resulting in lower broadband requirements for delivering expanded educational offerings.