



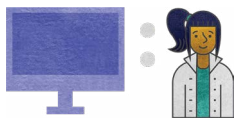
TECHNOLOGY FOOTPRINT

JANUARY 2020

EAST FELICIANA PARISH SNAPSHOT

[7 SCHOOLS • 1,803 STUDENTS • 1,143 DEVICES]

Since 2011, the state has been reporting school system progress relative to broadband and technology availability to students. This snapshot depicts current status in comparison to the state. [View the full report](#) providing an overview of Louisiana’s technology readiness and educational technology progress.



DEVICES

DISTRICT

STATE

| | | |
|---------------------------------|-------|-------|
| AVERAGE STUDENT TO DEVICE RATIO | 1.6:1 | 1.1:1 |
|---------------------------------|-------|-------|

PERCENT OF DEVICES BY TYPE:

| | | |
|------------|-----|-----|
| TABLET | 0% | 3% |
| LAPTOP | 22% | 20% |
| CHROMEBOOK | 26% | 52% |
| DESKTOP | 38% | 24% |
| VDI | 14% | 1% |



BANDWIDTH*

DISTRICT

STATE

| | | |
|-------------------------------|-----|-----------|
| AVERAGE BANDWIDTH PER STUDENT | 555 | 1.13 MBPS |
|-------------------------------|-----|-----------|



STAFFING

DISTRICT

STATE

| | | |
|------------------------------|---|--------------------------|
| EDUCATIONAL TECHNOLOGY STAFF | 0 | AVERAGE 3.4 PER DISTRICT |
| INFORMATION TECHNOLOGY STAFF | 2 | AVERAGE 6.1 PER DISTRICT |

* Many Louisiana school systems utilize caching, peer-to-peer (P2P), and other network optimization technologies which ensure more efficient use of bandwidth resources resulting in lower broadband requirements for delivering expanded educational offerings.