



# TECHNOLOGY FOOTPRINT SNAPSHOT

## POINTE COUPEE PARISH SCHS

Total Schools: 6  
Total Students: 2973  
Total Test Takers: 1999

OVERALL READINESS: **READY**

### DEVICES



Over the past 6 years, Louisiana’s schools have substantially expanded student device access for daily classroom instruction and school assessments. Districts across the state are meeting these expectations through lowering student-to-device ratios to support daily instruction and learning. Districts offer a variety of personal computing devices, including laptops, tablets and traditional desktop computers, to meet their educational goals.

#### Student Devices by Type



547

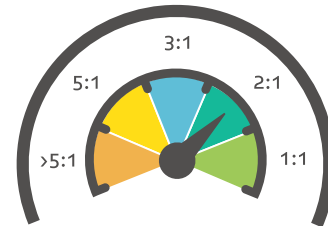


1690



0

#### Students to Device Ratio



### INTERNET BANDWIDTH



Bandwidth measures how much information can be transferred across an internet connection at one time. Schools that offer higher bandwidth ensure that the maximum number of students can benefit from online resources and tools via the Internet. Louisiana’s statewide assessments only require 50 kilobits per second (kbps) of internet bandwidth per student; however accessing the Internet as part of daily classroom instruction is better supported by a 100 kbps or more bandwidth per student.

MAKING PROGRESS

READY

EXCEEDING



### NETWORK READINESS



Network readiness determines whether a school’s internal network and/or district’s school-to-school wide area network is able to support student educational activities. District networks should be capable of supporting both current network connectivity of 1 Gbps and future instructional requirements, devices, and technology rich resources of 10 Gbps or more.

MAKING PROGRESS

READY

EXCEEDING

