

Louisiana Believes

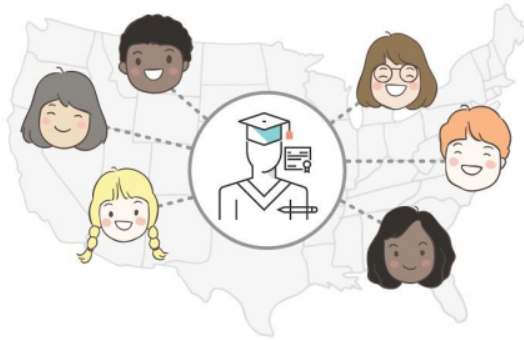
2019 LEAP 2025 Results
July 11, 2019

Every day in Louisiana, educators are committed to making sure that all students and schools have the opportunity to grow and thrive.

By 2025, Louisiana's K-12 education system will...



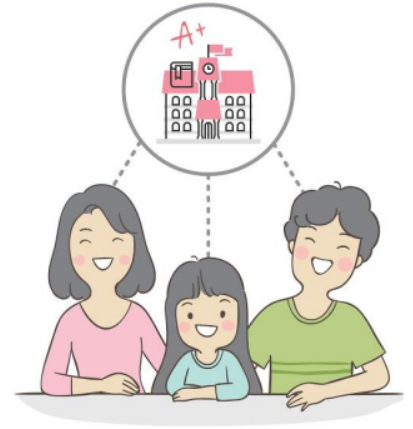
ensure students are ready for the next level of study,



give all students access to the same opportunities as their peers across the country,



require comprehensive support for struggling schools and groups of students, and



provide families and communities with an accurate picture of school, center, and system performance and quality.

Every day, all **students** are in schools that treat them with dignity and respect and where they have the opportunity to...



+



+



+



build knowledge
of the world,

read
meaningful texts,

express ideas through
writing and speaking, and

solve
complex problems.

Today's Release

Today's release is the first in a series of reports that use results from LEAP 2025 assessments to provide educators and families with information on students' progress towards these goals.

Early summer:
Subject-area
proficiency rates of
students, schools,
and school systems



Late summer:
Annual rates of
growth from one
year to the next for
students, teachers,
schools, and school
systems



Fall:
School performance
scores that combine
proficiency rates
and growth rates,
reported in School
Finder

How Have LEAP Tests Changed Over Time?

1999

Grades 4 and 8 LEAP assessments designed to be as challenging as NAEP. However, results are not comparable with other states. “Approaching Basic” (level 2) and levels above earn schools performance score points.

2006

Grades 3, 5, 6, and 7 iLEAP assessments designed to be as challenging as NAEP. However, results are not comparable with other states.

2015

New ELA and math grades 3–8 assessments measure shared standards and results are significantly comparable to other states for the first time.

2017

LEAP 2025 ELA, math, and social studies assessments are online and new social studies LEAP 2025 assessment is implemented.

2018

New LEAP 2025 high school assessments in English I and II, Algebra I, Geometry, and U.S. History are implemented, and new LEAP 2025 science assessment field tested.

2019

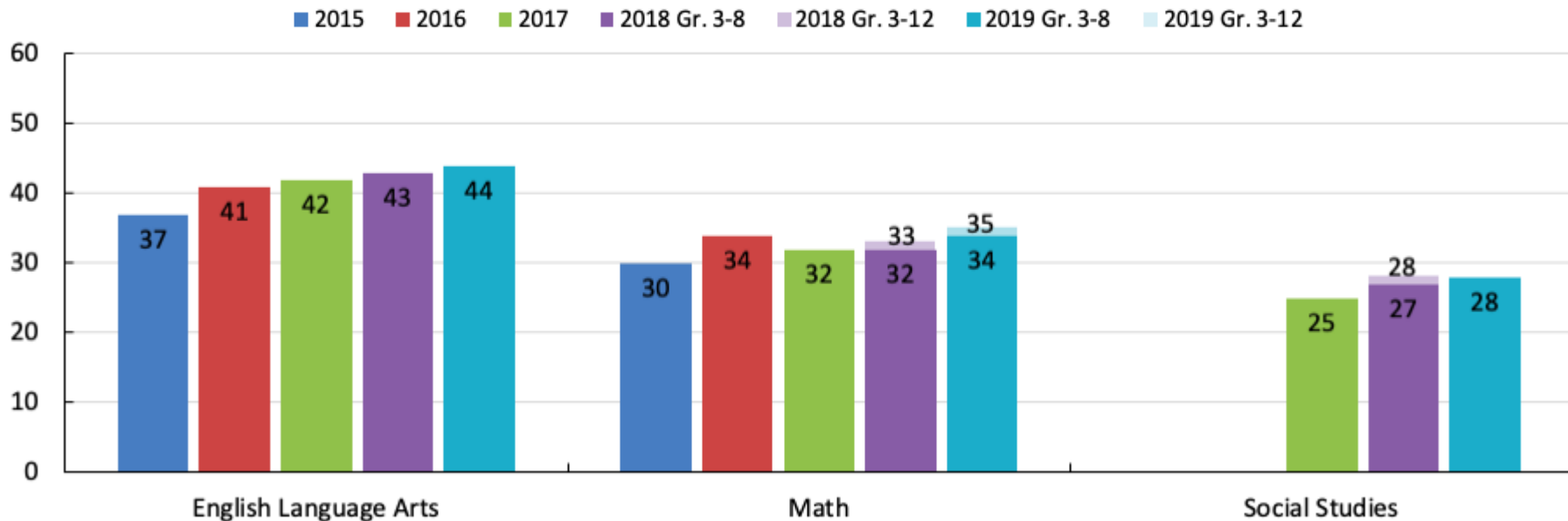
New LEAP 2025 science assessment for grades 3–8 and Biology high school assessment implemented.

2025

Schools earning ratings of “A” will have an average performance of “Mastery” rather than “Basic.”

Student Progress Toward Mastery: ELA, Math, & Social Studies 2015-2019

Louisiana students have steadily improved performance on LEAP 2025 assessments in English language arts (ELA), math, and social studies since 2018 and over time.



Student Progress Toward Mastery: Grade and Subject Trends

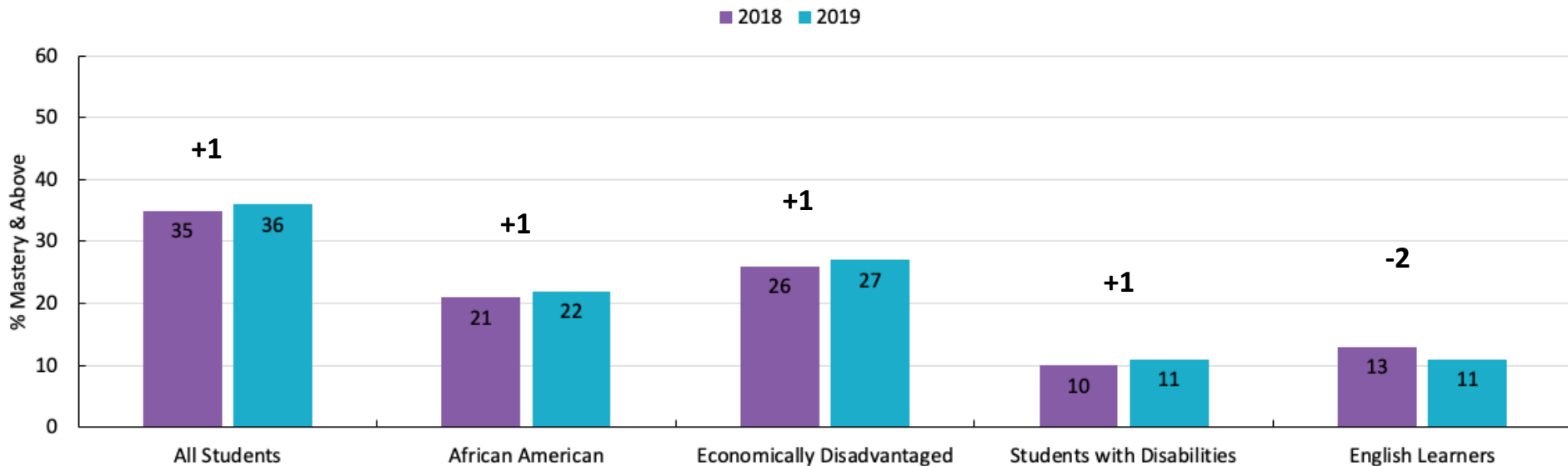
ELA				Math				Social Studies			
Grade	2018	2019	Change	Grade	2018	2019	Change	Grade	2018	2019	Change
3	45	46	+1	3	42	43	+1	3	24	24	0
4	44	45	+1	4	38	41	+3	4	24	24	0
5	43	40	-3	5	30	34	+4	5	21	25	+4
6	35	38	+3	6	27	30	+3	6	25	24	-1
7	43	47	+4	7	25	27	+2	7	34	33	-1
8	45	47	+2	8	28	28	0	8	37	40	+3
English I	45	44	-1	Algebra I	40	38	-2	US History	31	29	-2
English II	46	47	+1	Geometry	30	34	+4				

Student Progress Toward Mastery: Summary

- **Louisiana's students score highest and have seen the greatest improvement since 2015 in literacy.** To continue this trend, Louisiana must commit to building foundations of literacy in grades K-2.
- **Though math performance has improved since 2015, the results highlight an ongoing need for stronger math instruction, particularly in the later elementary and middle school grades.** The grade-by-grade 2019 results show math proficiency begins to slow in grades 6 and 7, halt in grade 8 and then decrease in Algebra I.
- **Social studies results are improving at a pace similar to ELA and math, but overall performance remains significantly lower than in ELA and math.** Long-term data are not available, as these assessments were updated in 2016-2017 and 2017-2018.

Performance of Historically Disadvantaged Groups: All Grades and Subjects (ELA, Math, & Social Studies)

Though Louisiana has improved performance among most subgroups, the performance levels and rates of improvement for students with disabilities and English learners remain significantly below peers.



Most Improved School Systems: All Grades and Subjects (ELA, Math, & Social Studies)

Since 2018, 70 percent of school systems improved across ELA, math, and social studies in grades 3-12.

School System	2018 Mastery+	2019 Mastery+	2018 to 2019 Change
LaSalle Parish	35	40	+5
Central Community School District	50	54	+4
DeSoto Parish	40	44	+4
East Feliciana Parish	26	29	+3
Avoyelles Parish	21	24	+3
Vermilion Parish	46	49	+3
Calcasieu Parish	36	39	+3
Livingston Parish	45	48	+3
Tensas Parish	8	11	+3
City of Monroe School District	25	28	+3

Student Progress Toward Mastery: Strategies for Improvement

Louisiana must continue to address persistent challenges, including:

- **Building a solid foundation of literacy.** The Department will staff and support the new Louisiana Early Literacy Commission, [created by legislation in 2019](#), to study and make recommendations for the development and implementation of an aligned system that provides effective evidence-based reading instruction for children from birth through third grade.
- **Strengthening social studies instruction.** Louisiana is now piloting [an innovative joint ELA and social studies assessment](#), in part, to encourage teachers to focus more on knowledge building and to more closely collaborate with their peers across subjects.

Student Progress Toward Mastery: Strategies for Improvement (Continued)

- **Enhancing supports for diverse and struggling students.** The Department will add supports to its nationally-recognized [ELA Guidebooks curriculum](#) to help educators support their most diverse and struggling students, including English learners, in the core classroom. The Department will also train [640 Intervention Content Leaders](#), teachers or administrators who implements academic interventions to ensure all students, including those who struggle most, are gaining academic ground.
- **Providing increased support to struggling schools.** Louisiana has an annual process of identifying and funding struggling schools' research-based, tailored plans for improvement. In 2019-2020, [Louisiana will support these struggling schools](#) as they implement high quality curricula and expand professional development opportunities for both administrators and educators through [School Support Institutes](#), which kicked off at the Teacher Leader Summit with a [track](#) specific to helping school leaders in these schools prepare for the upcoming school year. Additionally, the Department is training thousands of teachers to serve as [Content Leaders](#), content experts who are equipped to provide curriculum-specific training to their peers, or [Mentor Teachers](#), professionally trained coaches to aspiring and new teachers.

How are LEAP 2025 Results Used?



By Families

Families receive individual student scores through **student-specific reports** that detail academic strengths and challenges. Parents can also use **School Finder** to locate information about school and school system performance.



By Teachers

Teachers use student performance and progress data to **identify gaps** in learning and instruction, provide **targeted interventions** to students, and **set meaningful goals** for their classrooms at the start of each school year.



By School & System Leaders

School and school system leaders review achievement and progress data in the **principal and superintendent secure reporting portal**, and they use the data to identify and implement strategies to support improvement in struggling schools.



By the LDOE

The state uses test results as one factor in evaluating school and district performance. Struggling schools complete improvement plans as part of **Louisiana's ESSA plan** and compete for funding to support these plans. The state also determines charter school renewal and RSD status in light of ratings.

Next Step: Communicating Results to Families

Release of LEAP 2025 Results to Students and Families

- School systems are sending home student reports for LEAP 2025 ELA, mathematics, and social studies to families and students, along with a copy of the [Parent Guide to the LEAP 2025 Student Reports](#). Translated versions of the Parent Guide are available in the [Family Support Toolbox library](#) on the Department's website.
- School systems may use LEAP 2025 results as one source of information with which to determine supports students need. Under state law, students who have not met basic proficiency standards must receive intensive support over the summer or throughout the year.

Next Step: Analyzing Annual Student Progress

Release of Student Progress Results

- Student progress results at the classroom, school, and school system levels will be released in August to provide educators and administrators with information on the extent to which students make progress toward content mastery, and how well they progressed relative to their peers, during the 2018-2019 school year.

Next Step: Reporting on Overall School Performance

Release of 2019 School Performance Scores

- This fall, as part of Louisiana's plan to comply with the federal Every Student Succeeds Act, schools will also receive a score and letter grade equivalent for both student performance and student progress, in addition to a comprehensive grade and score.

HOW IS THIS SCHOOL PERFORMING ON PERFORMANCE SCORE METRICS?



STUDENT PERFORMANCE

D 54.9

[View Details](#)



STUDENT PROGRESS

A 90.9

[View Details](#)