

# Louisiana Believes

---

**2018-2019 LEAP 2025 Student Progress**  
August 27, 2019

The background of the slide is a watercolor-style illustration. It features a central white area that tapers towards the top and bottom, creating a sense of depth. This white area is surrounded by various shades of blue, from light, airy washes to darker, more saturated tones. The overall effect is soft and artistic, typical of watercolor painting.

# Understanding Student Progress

# Today's Release

Today's release is the second in a series of reports that use results from LEAP 2025 assessments to provide educators and families with information on students' progress towards these goals.

## Early summer:

Subject-area proficiency rates of students, schools, and school systems



Today:  
Annual rates of growth from one year to the next for students, teachers, schools, and school systems



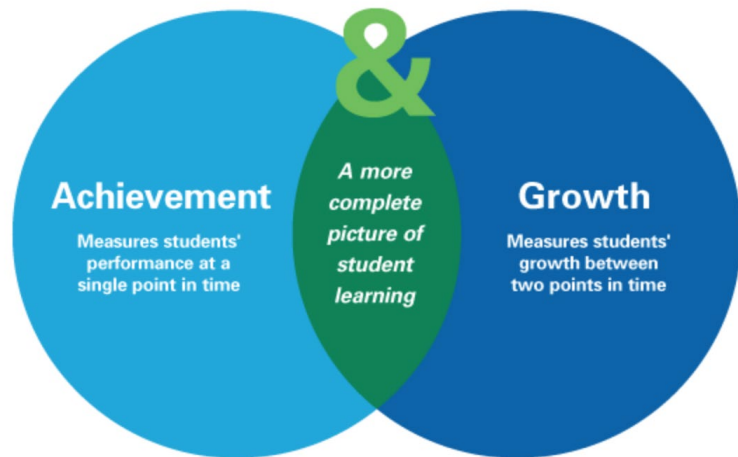
Fall:  
School performance scores that combine proficiency rates and growth rates, reported in School Finder

# What is Student Progress?

By 2025, as outlined in the state's ESSA plan, the average A-rated school in Louisiana is one in which students are proficient in literacy and math skills, demonstrated by a score of Mastery or Advanced on state assessments. To ensure students are improving at a rate that will allow them to reach this goal, the state has developed a measurement tool that assigns each student a tailored growth target to meet each year and then tracks how their performance changes over time.

Academic achievement indicates whether students are prepared for the next level of study. Student progress indicates whether students are improving from one year to the next. Together, achievement and progress provide a more complete picture.

The state's accountability system measures not only where students ended up, but how much progress they made to get there.



# How Does Louisiana Measure Progress?

Louisiana celebrates all students demonstrating **top growth** on the progress measure.

Schools earn an 'A' in the progress measure for assessment results that demonstrate top growth by:

- showing improvement on ELA and math assessments that is on track to Mastery of key skills and content by 8th grade (elementary/middle school) or 10th grade (high school), and/or
- outperforming other similar students statewide, as measured by Louisiana's value-added model.

Because the student progress measure takes into account where a student started--his or her prior achievement level--schools and school systems serving students who enter school with learning gaps can earn an 'A' in the progress measure for improving outcomes, even if students need time to reach full mastery.

*Note: Student progress is measured across two years in order to increase stability and accuracy. Therefore, 2019 progress results represent growth in 2017-18 and 2018-19.*

The background of the slide is a watercolor-style illustration. It features a central white area that tapers towards the top and bottom, creating a sense of depth. This white area is surrounded by various shades of blue, from light sky blue to deep, dark teal. The colors are blended together in a soft, painterly manner, with some darker spots and gradients that give it a textured, artistic feel.

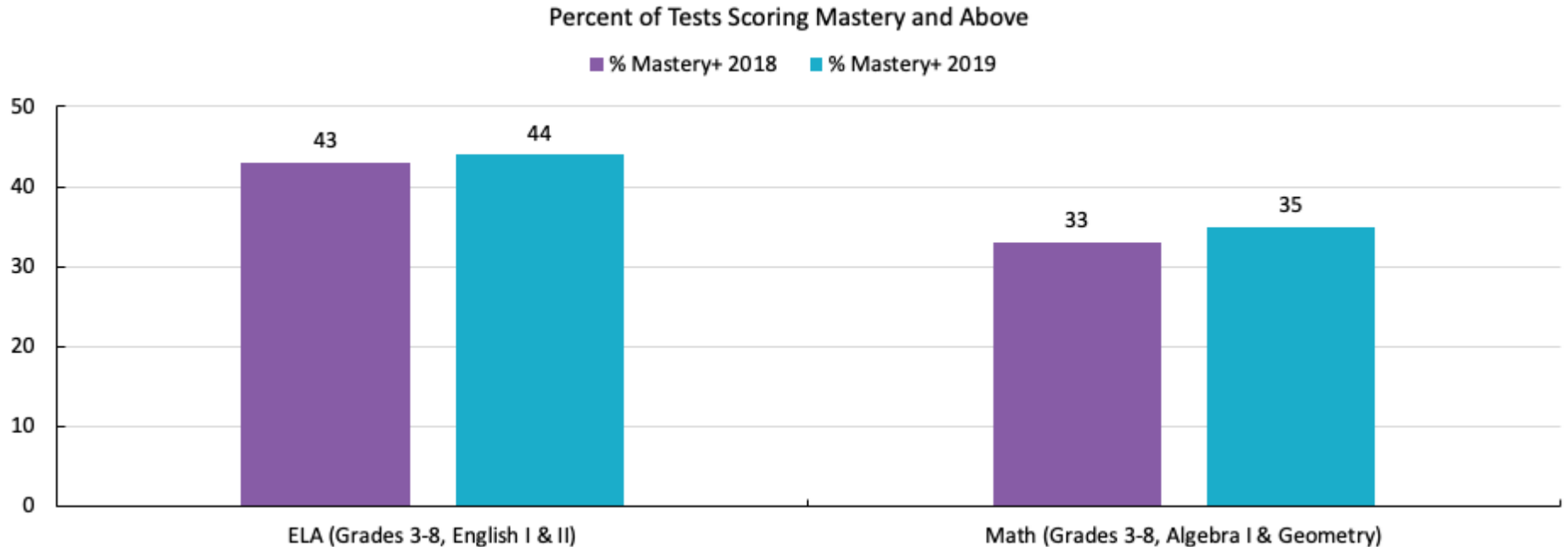
# 2019 Student Progress Results

# Student Progress Toward Mastery: Key Trends

- **Students are progressing at a faster pace in ELA than in math, mirroring recent subject-area state assessment achievement results.** The 2019 progress results show that 47 percent of students achieved top growth in ELA, compared to 44 percent in math.
- **Louisiana is demonstrating the greatest growth with students scoring Basic in the prior year.** This is followed closely by the most struggling students, those scoring Approaching Basic or Unsatisfactory in the prior year.
- **Historically disadvantaged students are making progress, but not at a rate sufficient to close gaps with their peers.** On ELA and math assessments combined, 46 percent of all students in Louisiana demonstrated top growth in 2019, that level was achieved by 43 percent of black students, 44 percent of economically disadvantaged students, 45 percent of English learners, and 42 percent of students with disabilities. Educators must support these historically disadvantaged groups of students to improve at a faster pace than their peers to close the achievement gaps.

# Student Progress Toward Mastery: LEAP 2025 ELA and Math

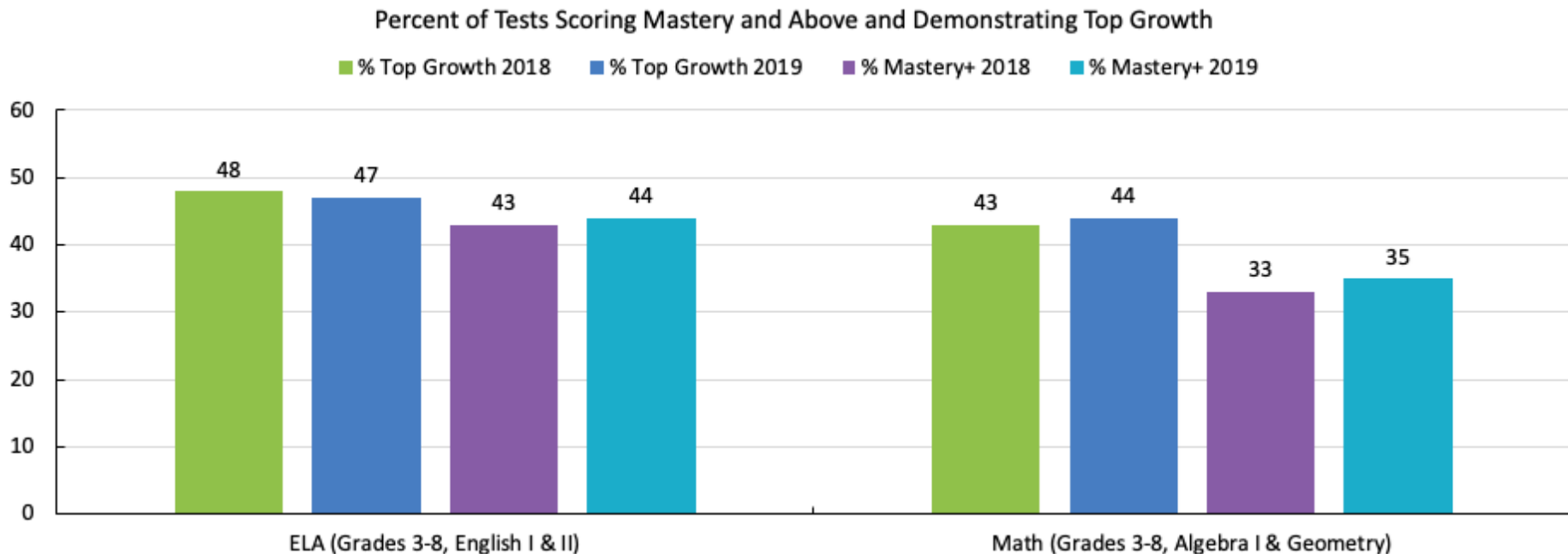
Louisiana students have steadily improved performance on LEAP 2025 assessments in English language arts (ELA) and math.





# Student Progress Results: Percent of Students Demonstrating Top Growth

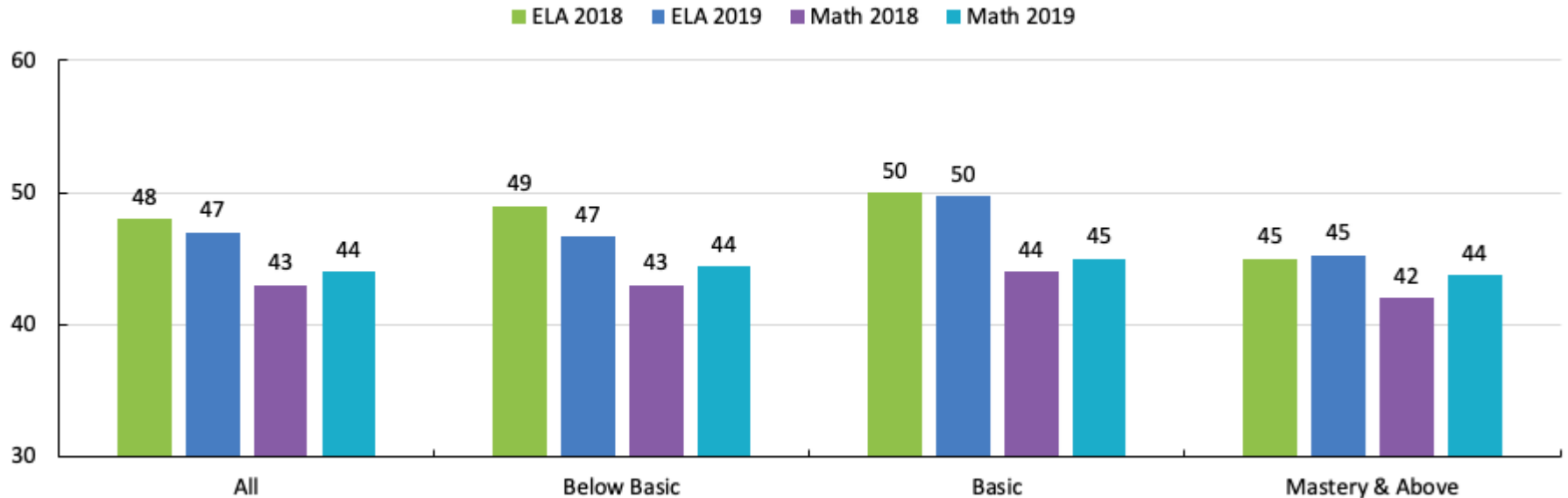
Students are making greater progress in ELA than in math, mirroring trends in the percent of students scoring Mastery and above in each subject.



# Student Progress Results by Prior Achievement Level

On both ELA and math assessments, Louisiana schools are achieving the greatest rates of progress with students scoring Basic in the prior year, followed by students scoring below Basic.

Percent of Tests Demonstrating Top Growth by Prior Year Achievement Level

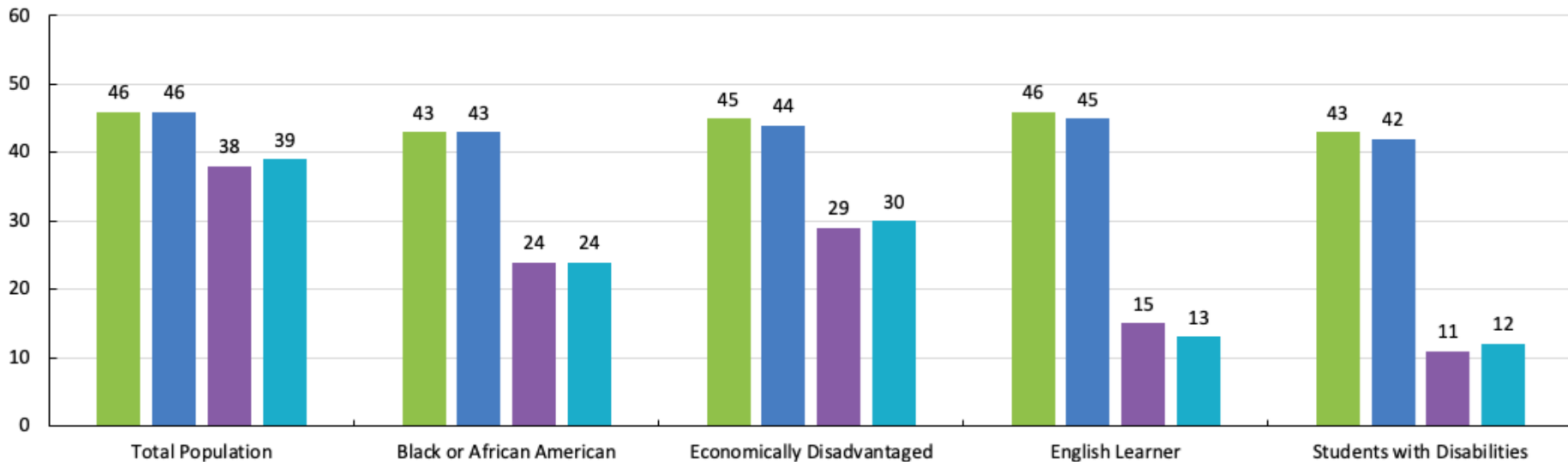


# Student Progress Results by Student Group

While the percent of students demonstrating top growth is consistent across student groups, significant gaps still exist in the rate of students scoring Mastery and above. Accelerated growth is necessary to close these gaps.

Percent of ELA and Math Tests Demonstrating Top Growth and Scoring Mastery and Above

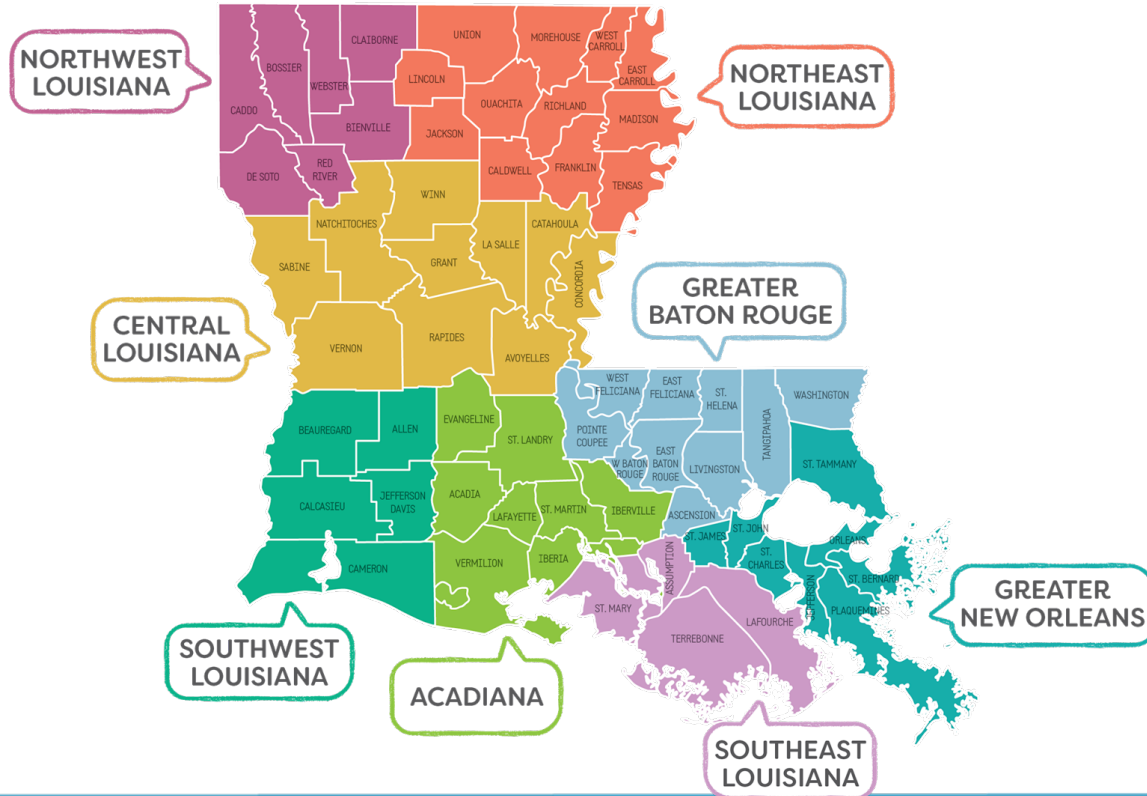
■ % Top Growth 2018 ■ % Top Growth 2019 ■ % Mastery+ 2018 ■ % Mastery+ 2019



The background of the slide is a watercolor-style illustration. It features soft, blended washes of light blue and white, creating a textured, ethereal effect. The colors are more saturated in some areas and lighter in others, giving it a sense of depth and movement. The overall aesthetic is clean and modern.

# Outstanding Schools and School Systems

# Outstanding Schools by Region



# Outstanding Schools: Northwest Louisiana

School	School System	% Top Growth ELA and Math
Homer Elementary School	Claiborne Parish	65
Kingston Elementary School	Bossier Parish	63
Caddo Parish Magnet High School	Caddo Parish	62
North Highlands Elementary School	Caddo Parish	62
Stockwell Place Elementary School	Bossier Parish	60
Ringgold Elementary School	Bienville Parish	59
Apollo Elementary School	Bossier Parish	58
Southern Hills Elementary School	Caddo Parish	58
Westwood Elementary School	Caddo Parish	58
Central Park Elementary School	Bossier Parish	56
Parkway High School	Bossier Parish	56
Claiborne Fundamental Elementary School	Caddo Parish	56
Caddo Virtual Academy	Caddo Parish	56
Queensborough Elementary School	Caddo Parish	55
North DeSoto Middle School 6-8	DeSoto Parish	55

# Outstanding Schools: Northeast Louisiana

School	School System	% Top Growth ELA and Math
Sterlington Elementary School	Ouachita Parish	62
Pinecrest Elementary/Middle School	Ouachita Parish	59
Holly Ridge Elementary School	Richland Parish	58
New Vision Learning Academy	New Vision Learning Academy	58
Southside Elementary School	East Carroll Parish	57
Jack Hayes Elementary School	Ouachita Parish	57
Wossman High School	City of Monroe School District	57
Choudrant High School	Lincoln Parish	55
Choudrant Elementary School	Lincoln Parish	55
Mangham Elementary School	Richland Parish	55
General Trass High School	East Carroll Parish	54
Madison High School	Madison Parish	54
Highland Elementary School	Ouachita Parish	53
Boley Elementary School	Ouachita Parish	53
West Ridge Middle School	Ouachita Parish	52
Oak Grove Elementary School	West Carroll Parish	52
Sallie Humble Elementary School	City of Monroe School District	52

# Outstanding Schools: Central Louisiana

School	School System	% Top Growth ELA and Math
Zwolle High School	Sabine Parish	65
Ferriday Upper Elementary School	Concordia Parish	63
N.S.U. Elementary Lab School	Natchitoches Parish	60
Paradise Elementary School	Rapides Parish	60
Bunkie Elementary School	Avoyelles Parish	59
Provencal Elementary & Junior High School	Natchitoches Parish	59
Anacoco High School	Vernon Parish	59
Pollock Elementary School	Grant Parish	58
Mary Goff Elementary School	Rapides Parish	58
Cherokee Elementary School	Rapides Parish	57
Evans High School	Vernon Parish	57
LaSalle Junior High School	LaSalle Parish	56
Natchitoches Jr. High School	Natchitoches Parish	56
Plainview High School	Rapides Parish	56
Many High School	Sabine Parish	56



# Outstanding Schools: Acadiana

School	School System	% Top Growth ELA and Math
Westside Elementary School	Lafayette Parish	71
East Elementary School	St. Landry Parish	68
Kaplan High School	Vermilion Parish	68
Green T. Lindon Elementary School	Lafayette Parish	67
Ossun Elementary School	Lafayette Parish	66
Coteau Elementary School	Iberia Parish	65
Pesson Addition Elementary School	Iberia Parish	65
Park Elementary School	Iberia Parish	64
Katharine Drexel Elementary School	Lafayette Parish	63
Sugarland Elementary School	Iberia Parish	62
Ridge Elementary School	Lafayette Parish	62
South Rayne Elementary School	Acadia Parish	61
Martin Petitjean Elementary School	Acadia Parish	60
North Street Elementary School	Iberia Parish	60
Carencro Heights Elementary School	Lafayette Parish	60
Plantation Elementary School	Lafayette Parish	60
Early College Academy	Lafayette Parish	60
South Street Elementary School	St. Landry Parish	60

# Outstanding Schools: Southwest Louisiana

School	School System	% Top Growth ELA and Math
Prien Lake Elementary School	Calcasieu Parish	67
W. T. Henning Elementary School	Calcasieu Parish	66
Frasch Elementary School	Calcasieu Parish	61
T. S. Cooley Elementary Magnet School	Calcasieu Parish	60
Dolby Elementary School	Calcasieu Parish	57
E. K. Key Elementary School	Calcasieu Parish	57
Vinton Middle School	Calcasieu Parish	57
Welsh Elementary School	Jefferson Davis Parish	57
Carver Elementary School	Beauregard Parish	57
Sam Houston High School	Calcasieu Parish	55
Iowa High School	Calcasieu Parish	55
Ray D. Molo Middle Magnet School	Calcasieu Parish	55
Pine Wood Elementary School	Beauregard Parish	55
East Beauregard Elementary School	Beauregard Parish	55
Gillis Elementary School	Calcasieu Parish	54

# Outstanding Schools: Southeast Louisiana

School	School System	% Top Growth ELA and Math
St. Charles Elementary School	Lafourche Parish	75
Legion Park Elementary School	Terrebonne Parish	71
Upper Little Caillou Elementary School	Terrebonne Parish	70
North Larose Elementary School	Lafourche Parish	68
Terrebonne High School	Terrebonne Parish	67
Catahoula Elementary School	St. Martin Parish	65
Hattie A. Watts Elementary School	St. Mary Parish	65
Schriever Elementary School	Terrebonne Parish	65
Dularge Elementary School	Terrebonne Parish	64
Acadian Elementary School	Terrebonne Parish	61
Central Lafourche High School	Lafourche Parish	60
Sixth Ward Middle School	Lafourche Parish	60
Gibson Elementary School	Terrebonne Parish	60
Golden Meadow Upper Elementary School	Lafourche Parish	59
Caldwell Middle School	Terrebonne Parish	59
Elysian Fields Middle School	Terrebonne Parish	59

# Outstanding Schools: Greater Baton Rouge

School	School System	% Top Growth ELA and Math
Galvez Primary School	Ascension Parish	71
Woodlawn Elementary	East Baton Rouge Parish	70
IDEA Innovation	East Baton Rouge Parish	70
Freshwater Elementary School	Livingston Parish	66
B. R. Foreign Language Acad. Immersion Magnet	East Baton Rouge Parish	66
Oak Grove Primary School	Ascension Parish	65
Albany Upper Elementary School	Livingston Parish	65
Celerity Lanier Charter School	RSD-Baton Rouge	65
Catholic Elementary School of Pointe Coupee	Baton Rouge Diocese	65
Wesley Ray Elementary School	Washington Parish	64
Prairieville Middle School	Ascension Parish	63
Duplessis Primary School	Ascension Parish	63
South Live Oak Elementary School	Livingston Parish	63
Westdale Heights Academic Magnet School	East Baton Rouge Parish	63
Baton Rouge Magnet High School	East Baton Rouge Parish	62

# Outstanding Schools: Greater New Orleans

School	School System	% Top Growth ELA and Math
Benjamin Franklin High School	Orleans Parish	71
Dwight D. Eisenhower Charter School	Orleans Parish	67
Patrick F. Taylor Science & Technology Academy	Jefferson Parish	66
Harold Keller Elementary School	Jefferson Parish	65
Lake Forest Elementary Charter School	Orleans Parish	64
Laureate Academy Charter School	Jefferson Parish	63
Bonella A. St. Ville Elementary School	Jefferson Parish	63
Haynes Academy School for Advanced Studies	Jefferson Parish	63
Paul Habans Charter School	Orleans Parish	61
Belle Chasse Primary School	Plaquemines Parish	61
McDonogh 42 Charter School	Orleans Parish	61
Metairie Academy for Advanced Studies	Jefferson Parish	60
Wilson Charter School	Orleans Parish	60
Riverdale High School	Jefferson Parish	59
Myrtle C. Thibodeaux Elementary School	Jefferson Parish	59

# Outstanding School Systems

School System	2018 % Top Growth	2019 % Top Growth	2019 % Mastery+
Ascension Parish	55	54	57
Lafourche Parish	53	53	51
Vermilion Parish	52	53	54
St. James Parish	55	51	47
Zachary Community School District	49	51	60
Central Community School District	49	51	57
Lincoln Parish	52	50	42
Terrebonne Parish	53	50	46
Sabine Parish	52	49	41
DeSoto Parish	49	48	47

# Outstanding School Systems: African American Students

School System	2018 % Top Growth	2019 % Top Growth	2019 % Mastery+
Ascension Parish	51	50	39
St. James Parish	55	50	35
Vermilion Parish	50	50	30
Lafourche Parish	48	49	27
Central Community School District	48	49	38
Iberia Parish	50	48	32
Madison Parish	38	48	13
Terrebonne Parish	51	47	29
RSD-Baton Rouge	49	47	17
Lincoln Parish	48	46	24

# Outstanding School Systems: Economically Disadvantaged Students

School System	2018 % Top Growth	2019 % Top Growth	2019 % Mastery+
Lafourche Parish	52	52	42
Vermilion Parish	51	52	44
Ascension Parish	52	51	43
St. James Parish	55	50	35
Terrebonne Parish	52	49	39
Central Community School District	47	49	46
Iberia Parish	49	48	38
Lincoln Parish	50	48	31
Madison Parish	39	48	13
Sabine Parish	52	48	35



# Outstanding School Systems: Students with Disabilities

School System	2018 % Top Growth	2019 % Top Growth	2019 % Mastery+
Vermilion Parish	48	52	24
Lafourche Parish	49	51	16
Central Community School District	41	51	16
Ascension Parish	51	50	22
Iberia Parish	51	49	17
Madison Parish	40	49	3
Tensas Parish	47	49	4
Zachary Community School District	45	49	18
Lincoln Parish	49	48	10
Terrebonne Parish	48	46	14

# Outstanding School Systems: English Learners

School System	2018 % Top Growth	2019 % Top Growth	2019 % Mastery+
Zachary Community School District	61	65	71
DeSoto Parish	60	62	17
Allen Parish	10	61	10
Avoyelles Parish	50	58	8
West Carroll Parish	40	58	18
City of Baker School District	NR	58	29
Vernon Parish	57	57	32
St. James Parish	59	55	46
Beauregard Parish	53	54	20
Natchitoches Parish	52	54	17

# Using Student Progress Results

# Student Progress Toward Mastery: Strategies for Improvement

Louisiana must continue to address persistent challenges, including:

- **Building a solid foundation of literacy.** The Department will staff and support the new Louisiana Early Literacy Commission, [created by legislation in 2019](#), to study and make recommendations for the development and implementation of an aligned system that provides effective, evidence-based reading instruction for children from birth through third grade.
- **Strengthening social studies instruction.** Louisiana is now piloting [an innovative joint ELA and social studies assessment](#), in part, to encourage teachers to focus more on knowledge building and to more closely collaborate with their peers across subjects.

# Student Progress Toward Mastery: Strategies for Improvement (Continued)

- **Enhancing supports for diverse and struggling students.** The Department will add supports to its nationally-recognized [ELA Guidebooks curriculum](#) to help educators support their most diverse and struggling students, including English learners, in the core classroom. The Department will also train [640 Intervention Content Leaders](#) in XX schools in XX parishes, teachers or administrators who implement academic interventions to ensure all students, including those who struggle most, are gaining academic ground.
- **Providing increased support to struggling schools.** Louisiana has an annual process of identifying and funding struggling schools' research-based, tailored plans for improvement. In 2019-2020, [Louisiana will support these struggling schools](#) as they implement high quality curricula and expand professional development opportunities for both administrators and educators through [School Support Institutes](#), which kicked off at the Teacher Leader Summit with a [track](#) specific to helping school leaders in these schools prepare for the upcoming school year. Additionally, the Department is training thousands of teachers to serve as [Content Leaders](#), content experts who are equipped to provide curriculum-specific training to their peers, or [Mentor Teachers](#), professionally trained coaches to aspiring and new teachers.

# How are LEAP 2025 Results Used?



## By Families

---

---

Families receive individual student scores through **student-specific reports** that detail academic strengths and challenges. Parents can also use **School Finder** to locate information about school and school system performance.



## By Teachers

---

---

Teachers use student performance and progress data to **identify gaps** in learning and instruction, provide **targeted interventions** to students, and **set meaningful goals** for their classrooms at the start of each school year.



## By School & System Leaders

---

School and school system leaders review achievement and progress data in the **principal and superintendent secure reporting portal**, and they use the data to identify and implement strategies to support improvement in struggling schools.



## By the LDOE

---

---

The state uses test results as one factor in evaluating school and school system performance. Struggling schools complete improvement plans as part of **Louisiana's ESSA plan** and compete for funding to support these plans. The state also determines charter school renewal and RSD status in light of ratings.

# Next Step: Reporting on Overall School Performance

## Release of 2019 School Performance Scores

- This fall, as part of Louisiana's plan to comply with the federal Every Student Succeeds Act, schools will also receive a score and letter grade equivalent for both student performance and student progress, in addition to a comprehensive grade and score.

### HOW IS THIS SCHOOL PERFORMING ON PERFORMANCE SCORE METRICS?



#### STUDENT PERFORMANCE

**D** 54.9

[View Details](#)



#### STUDENT PROGRESS

**A** 90.9

[View Details](#)